



CABRILLO POINT ACADEMY

3152 Red Hill Ave., #150, Costa Mesa, California 92626

Phone (619) 404-3190 * Fax (619) 749-1792

**Regular Scheduled Board Meeting
Cabrillo Point Academy
March 3, 2020 – 1:00 pm
3152 Red Hill Ave., #150
Costa Mesa, CA 92626**

AGENDA

1. Call to Order
2. Approval of the Agenda
3. Public Comments
4. Principal's Report
 - a. Dehesa Oversight Visit
 - b. Test Prep Workshops
 - c. LCAP Update
5. Discussion and Potential Action on the February Board Meeting Minutes
6. Discussion and Potential Action on the Second Interim Report
7. Discussion and Potential Action on the Growth Projections and Enrollment Window
8. Discussion and Potential Action on the 2020-2021 School Calendar
9. Discussion and Potential Action on the Teacher Salary Schedule
10. Discussion and Potential Action on the Teacher Employee Contract
11. Discussion and Potential Action on the Lottery Policy
12. Discussion and Potential Action on the Work Sample Policy
13. Discussion and Potential Action on the Charter Impact Proposal
14. Announcement of Next Regular Scheduled Board Meeting
15. Adjournment

Public comment rules: Members of the public may address the Board on agenda or non-agenda items. Please fill out a yellow card available at the entrance. Speakers may be called in the order that requests are received, or grouped by subject area. We ask that comments are limited to 2 minutes each, with no more than 15 minutes per single topic so that as many people as possible may be heard. By law, the Board is allowed to take action only on items on the agenda. The Board may, at its discretion, refer a matter to district staff or calendar the issue for future discussion.

Note: Cabrillo Point Academy Governing Board encourages those with disabilities to participate fully in the public meeting process. If you need a disability-related modification or accommodation, including auxiliary aids or services, to participate in the public meeting, please contact the Governing Board Office at 818-207-3837 at least 48 hours before the scheduled board meeting so that we may make every reasonable effort to accommodate you. (Government Code § 54954.2; Americans with Disabilities Act of 1990, § 202 (42 U.S.C. § 12132)).



Cabrillo Point Academy Report
3-3-2020

Dehesa Oversight Update

Last Week

Worked with the auditors for HR, personnel, finance

March 11th

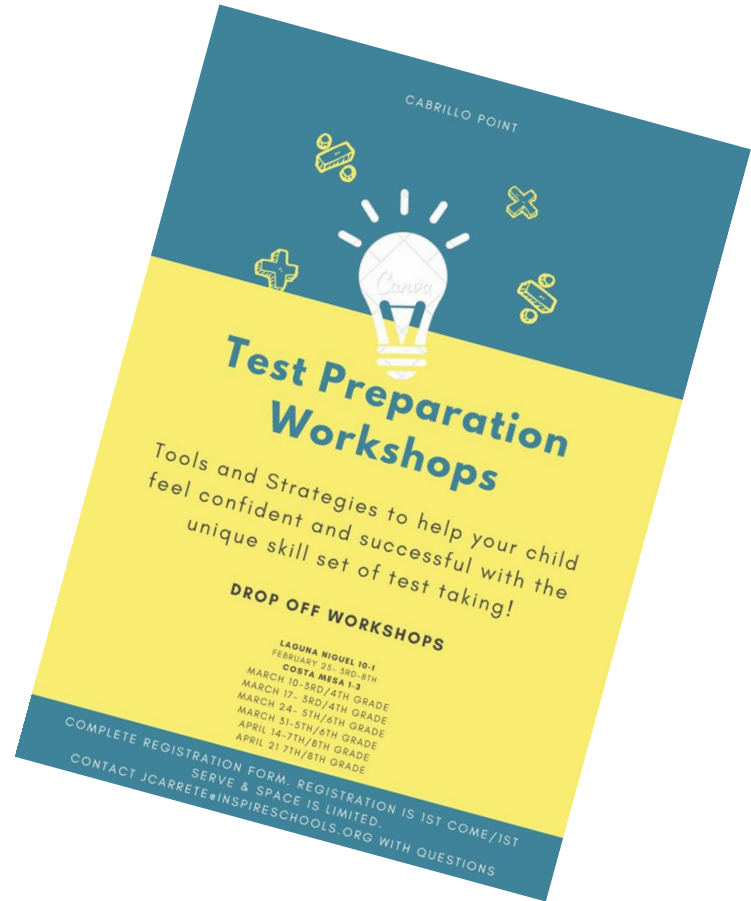
Instructional Visit with a mixture of leadership, teachers, SPED

Unplanned

Currently working on a schedule of family meetings to provide so they can drop in and see the interaction

Test Prep Update

- Coordinated by teachers
- Test taking skills and strategies
- Computer practice
- Ease anxiety



LCAP

Local Control Accountability Plan

- Gathering parent and student input (4th-12th grade) through separate surveys
- Emailed to all families last week
- Teachers will encourage families to complete the survey at face to face meetings
- Staff will be interacting with parents and students at community events
- March 31st
- Our goal is 100% participation

We appreciate you!



CABRILLO POINT ACADEMY

3152 Red Hill Ave., #150, Costa Mesa, California 92626

Phone (619) 404-3190 * Fax (619) 749-1792

Regular Scheduled Board Meeting – Cabrillo Point Academy

February 18, 2020 – 1:00 pm

3152 Red Hill Ave., #150, Costa Mesa, CA 92626

Attendance: Lisa Rumsey, Sherri McFadden, Gloria Antonini, Natasha Brunstetter

Absent: Caroline Moon

Also Present: Jenna Lorge

Call to Order:

Sherri McFadden called the meeting to order at 1:05pm.

Approval of the Agenda:

Lisa Rumsey motioned to approve the agenda. Natasha Brunstetter seconded.

-Unanimous.

Public Comments:

None

Principal's Report:

The Principal provided an update on:

- The Dehesa Oversight Audit and the work that has been conducted thus far.
- Update on having not received an official FCMAT Letter

Discussion and Potential Action on the January Board Meeting Minutes:

Lisa Rumsey motioned to approve the January Board Meeting Minutes with the following change: Under the “Discussion and Potential Action on the Transgender and Gender Nonconforming Students Policy”, Natasha Brunstetter seconded this action, not Lisa Rumsey. Gloria Antonini seconded.

-Unanimous

Discussion and Potential Action on the Homeless Youth Policy:

Sherri McFadden motioned to table this policy. Gloria Antonini seconded.

The board requested that the staff consult legal on the suggested changes to the policy:

5. Transpiration: needs more specific language on the release of liability.
6. Coursework and Graduation Requirements: suggest changing to “next steps post-graduation or listing of all possibilities” instead of just “California Community Colleges.”

-Unanimous

Discussion and Potential Action on the Comprehensive School Safety Plan

Natasha Brunstetter motioned to approve this policy with one correction, page 105, paragraph that begins “Specialized Staff Training”, at the end of this paragraph “employed by” is incomplete. Sherri McFadden seconded.

-Unanimous

Announcement of Next Regular Scheduled Board Meeting:

The Next Regular Scheduled Board Meeting is set for Tuesday, March 3, 2020 at 1:00 pm.

Adjournment:

Sherri McFadden adjourned the meeting at 1:56 pm. Lisa Rumsey seconded.

-Unanimous

Prepared by:
Bryanna Brossman

Noted by:

Board Secretary



Cabrillo Point Academy

Monthly Financial Presentation – January 2020

2nd Interim Report



CABRILLO POINT – Highlights

- Annual Projected Revenue: ↓ 96K
- Annual Project Expenses: ↓ 1.16MM
- Annual Projected Surplus: \$1.77MM

- SB740 Requirements:

In Compliance

Cert.	Inst.
44.2%	89.4%
1,881,776	4,164,647

*Must exceed
40% / 80%*

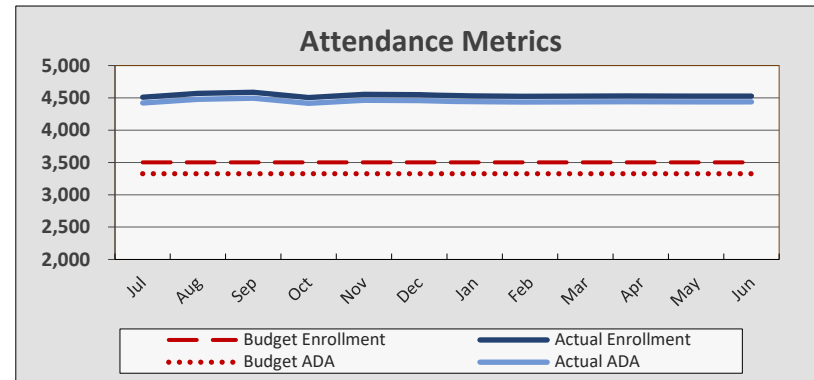
In Compliance

Pupil:Teacher Ratio
22.45 :1

*Must be equal to or less than
25:1*

CABRILLO POINT – Attendance

<i>Enrollment & Per Pupil Data</i>			
	<i>Actual</i>	<i>Forecast</i>	<i>Budget</i>
<i>Average Enrollment</i>	4536	4536	3503
<i>ADA</i>	4446	4446	3328
<i>Attendance Rate</i>	98.0%	98.0%	95.0%
<i>Unduplicated %</i>	34.9%	34.9%	34.8%
<i>Revenue per ADA</i>		\$9,972	\$9,880
<i>Expenses per ADA</i>		\$9,575	\$9,619



- Forecasted Annual Daily Attendance (ADA) – ↓ by 14 since Dec.
- Unduplicated Pupil % - Unchanged

CABRILLO POINT – Revenue

- Year-to-date federal revenue due to timing.
- Annual (+) variance due to higher forecasted ADA vs budget.
- 96k decrease between December and January due to ADA adjustment

Revenue

	Year-to-Date			Annual/Full Year		
	Actual	Budget	Fav/(Unf)	Forecast	Budget	Fav/(Unf)
State Aid-Rev Limit	\$ 21,380,225	\$ 21,351,136	\$ 29,089	\$ 40,375,065	\$ 29,876,831	\$ 10,498,235
Federal Revenue	-	-	-	513,062	513,062	-
Other State Revenue	1,442,985	1,540,120	(97,136)	3,399,811	2,491,328	908,483
Other Local Revenue	45,821	-	45,821	45,821	-	45,821
Total Revenue	\$ 22,869,031	\$ 22,891,256	\$ (22,225)	\$ 44,333,759	\$ 32,881,220	\$ 11,452,539

CABRILLO POINT – Expenses

- Overall expenses are unfavorable year-to-date.
- Salary forecast based on payroll through 1/31.
- Staffing adjusted and MOU adjustments reflected in actuals
 - Certificated salaries increased by 1.5MM
 - Sub-agreement services decreased by 2.5MM

	Year-to-Date			Annual/Full Year		
	Actual	Budget	Fav/(Unf)	Forecast	Budget	Fav/(Unf)
Expenses						
Certificated Salaries	\$ 8,353,494	\$ 6,217,867	\$ (2,135,627)	\$ 14,434,693	\$ 10,659,200	\$ (3,775,493)
Classified Salaries	102,828	26,250	(76,578)	202,827	45,000	(157,827)
Benefits	2,449,253	1,960,684	(488,569)	4,377,698	3,365,652	(1,012,046)
Books and Supplies	1,739,532	3,581,266	1,841,734	7,203,115	5,571,988	(1,631,127)
Subagreement Services	7,530,886	5,369,078	(2,161,808)	12,588,749	8,188,299	(4,400,449)
Operations	194,858	236,848	41,990	279,972	406,026	126,054
Facilities	6,663	377,438	370,775	6,663	647,036	640,374
Professional Services	1,613,163	2,066,455	453,292	2,750,462	3,124,767	374,305
Depreciation	1,666	2,596	930	2,857	4,450	1,594
Interest	592,339	-	(592,339)	720,701	-	(720,701)
Total Expenses	\$ 22,584,682	\$ 19,838,482	\$ (2,746,201)	\$ 42,567,735	\$ 32,012,419	\$ (10,555,317)

CABRILLO POINT – Fund Balance

- Ending fund balance exceeds State requirements.
- Annual surplus is 4% of total revenue

	<i>Year-to-Date</i>			<i>Annual/Full Year</i>		
	Actual	Budget	Fav/(Unf)	Forecast	Budget	Fav/(Unf)
Total Surplus(Deficit)	\$ 284,349	\$ 3,052,774	\$ (2,768,426)	\$ 1,766,024	\$ 868,801	\$ 897,222
Beginning Fund Balance	<u>613,515</u>	<u>613,515</u>		<u>613,515</u>	<u>613,515</u>	
Ending Fund Balance	<u>\$ 897,864</u>	<u>\$ 3,666,289</u>		<u>\$ 2,379,539</u>	<u>\$ 1,482,316</u>	
<i>As a % of Annual Expenses</i>	2.1%	11.5%		5.6%	4.6%	

CABRILLO POINT – Multi-Year Forecast

- FY 19-20 through FY21-22 (3 Years) will be reported for 2nd Interims.
- Future years projected with positive cash balances and surpluses.

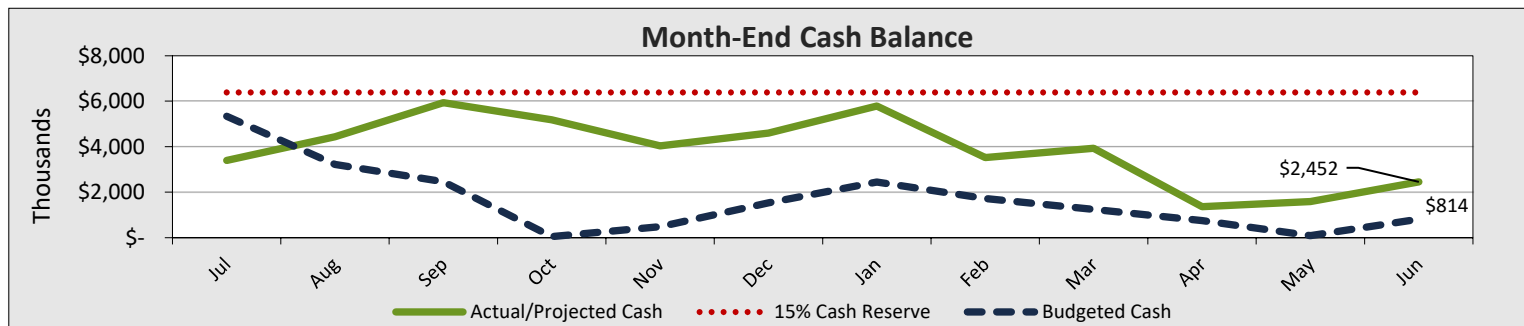
Future Year Assumptions Include:

- 2% COLA on overall expense
- 8% Employee Benefit Increase
- Minimum Wage Increases

	2018-19	2019-20	2020-21	2021-22
Total Revenue	\$ 42,962,676	\$ 44,333,759	\$ 45,269,138	\$ 46,363,758
Total Expenses	42,493,625	42,567,735	43,488,883	44,489,974
Annual Surplus	469,051	1,766,023	1,780,256	1,873,784
Beginning Fund Balance	70,062	539,113	2,305,136	4,085,392
Ending Fund Balance	\$ 539,113	\$ 2,305,136	\$ 4,085,392	\$ 5,959,176
<i>As a % of Annual Expenses</i>	1.3%	5.4%	9.4%	13.4%
Ending Cash Balance	\$ 4,067,860	\$ 2,451,687	\$ 1,759,748	\$ 3,725,851

CABRILLO POINT – Cash Balance

- Cash balance remains positive at year end
- Payback to and from schools included in projections (Only reductions in the balance)



CABRILLO POINT – Compliance Reporting

Area	Due Date	Description	Completed By	Board Must Approve	Signature Required
FINANCE	Feb-28	CSFA Charter School Revolving Loan Application - The CA School Finance Authority's Charter School Revolving Loan Fund provides low-interest loans of up to \$250,000 to new charter schools in their first charter term to assist them with meeting the purposes of the school's approved charter. The program is available to any charter school that is not a conversion of an existing public school, and that has not yet completed the full term of its initial charter. Applications are due February 28, 2020.	Cabrillo Point with Charter Impact support	Yes	Yes
FINANCE	Feb-28	Every Student Succeeds Act Per-Pupil Expenditure Application -The Elementary and Secondary Education Act of 1965 (ESEA), as reauthorized by the Every Student Succeeds Act (ESSA), requires state educational agencies (SEAs) and their local educational agencies (LEAs) to prepare and publish annual report cards that contain specified data elements, including LEA and school-level per-pupil expenditures (PPE).	Charter Impact	No	No
FINANCE	Mar-15	2nd Interim Financial Report - Local educational agencies (LEAs) are required to file two reports during a fiscal year (interim reports) on the status of the LEA's financial health. The first interim report is due December 15 for the period ending October 31. The second is due March 15 for the period ending January 31	Charter Impact	Yes	Yes
DATA	Mar-20	CALPADS - Fall 2 amendment deadline - Please be mindful that Level-2 certification within CALPADS means that these data have been reviewed and approved by your superintendent or IRC administrator. Failure to properly review and amend these data in CALPADS within the allotted amendment window will result in the improper certification of official Fall 2 data within CALPADS, which can impact a number of things, including LCFF funding, student course enrollments, staff assignments and English learner education services.	Charter Impact submits with data provided by Cabrillo Point	No	No
FINANCE	Mar-20	El Dorado SELPA Pre-Test for Year-End Maintenance of Effort (Special Education) - Report due to Charter school's SELPA. Maintenance of Effort (MOE) is a requirement that you spend each year at least what you spent last year in the area of special education (with some exceptions). If you reduce your special education budget (or expenditures) in a given year, you need to be careful to ensure that you have met the MOE requirement. This does not mean you can't reduce costs, but you must do so within the guidelines of federal MOE.	Charter Impact	No	No

CABRILLO POINT – Appendix

- Monthly Cash Flow / Forecast 19-20
- Budget vs. Actual
- Statement of Financial Position
- Statement of Cash Flows
- Due (To)/From All Inspire School Locations
- AP Aging

Cabrillo Point Academy
Monthly Cash Flow/Forecast FY19-20

Revised 02/27/20

ADA = 4445.69



	Jul-19	Aug-19	Sep-19	Oct-19	Nov-19	Dec-19	Jan-20	Feb-20	Mar-20	Apr-20	May-20	Jun-20	Year-End Accruals	Annual Forecast	Annual Budget	Favorable / (Unfav.)
ADA = 3327.85																
Revenues																
State Aid - Revenue Limit																
8011 LCFF State Aid	1,871,324	1,871,324	3,368,384	3,368,384	3,368,384	3,368,384	3,368,384	3,587,229	3,587,229	3,587,229	3,587,229	3,782,940	-	38,716,424	28,987,729	9,728,695
8012 Education Protection Account	-	-	216,026	-	-	216,026	-	-	237,385	-	-	219,701	-	889,138	665,570	223,568
8096 In Lieu of Property Taxes	-	-	-	247,251	-	58,177	58,177	42,461	21,231	21,231	21,231	299,745	-	769,504	223,532	545,972
	1,871,324	1,871,324	3,584,410	3,615,635	3,368,384	3,642,587	3,426,561	3,629,690	3,845,844	3,608,460	3,608,460	4,302,386	-	40,375,065	29,876,831	10,498,235
Federal Revenue																
8181 Special Education - Entitlement	-	-	-	-	-	-	-	-	256,531	-	-	128,265	128,265	513,062	513,062	-
	-	-	-	-	-	-	-	-	256,531	-	-	128,265	128,265	513,062	513,062	-
Other State Revenue																
8311 State Special Education	112,946	112,946	-	-	-	-	813,208	252,531	252,531	252,531	252,531	252,531	-	2,301,755	1,722,994	578,760
8550 Mandated Cost	-	-	-	-	89,452	-	-	-	-	-	-	-	-	89,452	89,452	0
8560 State Lottery	-	-	-	-	-	-	226,086	-	-	223,587	-	-	470,584	920,257	678,881	241,376
8598 Prior Year Revenue	90	-	-	-	-	-	81,066	-	-	-	-	-	-	81,156	-	81,156
8599 Other State Revenue	-	7,191	-	-	-	-	-	-	-	-	-	-	-	7,191	-	7,191
	113,036	120,137	-	-	89,452	-	1,120,360	252,531	252,531	476,118	252,531	252,531	470,584	3,399,811	2,491,328	908,483
Other Local Revenue																
8650 Lease and Rental Income	832	532	232	532	532	532	-	-	-	-	-	-	-	3,192	-	3,192
8660 Interest Revenue	13,049	-	-	9,889	-	13,818	5,103	-	-	-	-	-	-	41,860	-	41,860
8699 School Fundraising	-	769	-	-	-	-	-	-	-	-	-	-	-	769	-	769
	13,881	1,301	232	10,421	532	14,350	5,103	-	-	-	-	-	-	45,821	-	45,821
Total Revenue	1,998,241	1,992,762	3,584,642	3,626,056	3,458,368	3,656,937	4,552,024	3,882,221	4,354,906	4,084,578	3,860,991	4,683,182	598,850	44,333,759	32,881,220	11,452,539
Expenses																
Certificated Salaries																
1100 Teachers' Salaries	943,068	1,069,693	1,118,260	1,134,175	225,290	1,242,957	972,016	972,016	972,016	972,016	972,016	972,016	-	11,565,541	8,208,000	(3,357,541)
1170 Teachers' Substitute Hours	-	1,500	1,650	-	-	-	-	-	-	-	-	-	-	3,150	-	(3,150)
1175 Teachers' Extra Duty/Stipends	38,917	80,515	151,049	162,033	(13,086)	227,828	129,792	136,082	136,082	136,082	136,082	136,082	-	1,457,459	1,231,200	(226,259)
1200 Pupil Support Salaries	27,777	43,371	42,771	59,957	72,752	(63,513)	29,236	29,236	29,236	29,236	29,236	29,236	-	358,533	140,000	(218,533)
1300 Administrators' Salaries	105,703	110,553	112,712	110,359	3,672	124,097	92,446	78,905	78,905	78,905	78,905	78,905	-	1,054,066	1,080,000	25,934
1900 Other Certificated Salaries	6,769	14,881	14,881	6,769	(9,455)	(37,901)	-	-	-	-	-	-	-	(4,056)	-	4,056
	1,122,234	1,320,513	1,441,323	1,473,292	279,173	1,493,468	1,223,491	1,216,240	1,216,240	1,216,240	1,216,240	1,216,240	-	14,434,693	10,659,200	(3,775,493)
Classified Salaries																
2100 Instructional Salaries	15,896	22,304	24,171	26,446	26,876	(23,036)	22,339	20,000	20,000	20,000	20,000	20,000	-	214,995	-	(214,995)
2200 Support Salaries	-	3,131	3,372	3,693	3,372	(13,568)	-	-	-	-	-	-	-	-	-	-
2900 Other Classified Salaries	-	-	-	-	-	(12,168)	-	-	-	-	-	-	-	(12,168)	-	12,168
	15,896	25,435	27,543	30,139	30,249	(48,772)	22,339	20,000	20,000	20,000	20,000	20,000	-	202,827	45,000	(157,827)
Benefits																
3101 STRS	189,099	219,330	239,136	37,371	50,810	237,569	204,099	212,626	212,626	212,626	212,626	212,626	-	2,240,546	1,780,086	(460,460)
3301 OASDI	1,065	2,361	2,265	1,801	1,808	(2,995)	1,357	1,467	1,467	1,467	1,467	1,467	-	15,000	2,790	(12,210)
3311 Medicare	16,202	19,220	20,690	21,232	4,898	19,813	17,636	18,366	18,366	18,366	18,366	18,366	-	211,521	155,211	(56,310)
3401 Health and Welfare	(22,670)	188,896	136,141	151,662	132,309	212,675	153,478	126,000	126,000	126,000	126,000	126,000	-	1,582,492	1,120,000	(462,492)
3501 State Unemployment	19,611	13,547	5,942	2,951	(5,114)	2,882	49,364	21,104	10,552	5,276	5,276	5,276	-	136,667	78,400	(58,267)
3601 Workers' Compensation	-	23,909	11,955	11,955	11,955	26,831	12,200	17,733	17,733	17,733	17,733	17,733	-	187,468	149,859	(37,609)
3901 Other Benefits	-	-	4,201	(196)	-	-	-	-	-	-	-	-	-	4,005	79,306	75,302
	203,307	467,263	420,330	226,775	196,666	496,777	438,135	397,296	386,744	381,468	381,468	381,468	-	4,377,698	3,365,652	(1,012,046)
Books and Supplies																
4302 School Supplies	155,080	212,284	281,675	290,833	232,750	168,347	230,235	390,338	414,300	640,693	737,803	666,625	-	4,420,961	3,644,033	(776,928)
4305 Software	11,742	38,094	31,253	21,645	7,617	2,914	32,547	37,081	37,081	37,081	37,081	37,081	-	331,218	756,883	425,665
4310 Office Expense	1,313	1,662	3,138	3,298	1,800	1,208	1,993	5,000	5,000	5,000	5,000	5,000	-	39,413	119,726	80,313
4311 Business Meals	-	-	-	357	2,194	-	-	580	580	580	580	580	-	5,453	2,085	(3,368)
4400 Noncapitalized Equipment	-	4,932	-	-	17	567	36	657,610	587,201	362,059	416,936	376,713	-	2,406,071	827,842	(1,578,229)
	168,135	256,971	316,067	316,133	244,378	173,037	264,811	1,090,610	1,044,161	1,045,412	1,197,401	1,085,999	-	7,203,115	5,571,988	(1,631,127)
Subagreement Services																
5102 Special Education	12,924	176,409	51,519	113,087	218,896	159,619	317,571	217,167	217,167	217,167	217,167	217,167	-	2,135,860	1,299,493	(836,367)
5106 Other Educational Consultants	117,860	156,145	288,617	827,504	588,730	585,975	1,002,006	614,437	548,650	338,289	389,564	351,981	-	5,809,756	3,107,466	(2,702,291)
5107 Instructional Services	229,798	237,635	781,436	416,290	416,290	416,289	416,290	359,294	342,453	342,453	342,453	342,453	-	4,643,132	3,781,340	(861,792)
	360,582	570,189	1,121,572	1,356,880	1,223,916	1,161,882	1,735,866	1,190,898	1,108,270	897,909	949,184	911,601	-	12,588,749	8,188,299	(4,400,449)
Operations and Housekeeping																
5201 Auto and Travel	555	2,096	450	1,525	235	89	-	1,201	1,201	1,201	1,201	1,201	-	10,956	138,293	127,337
5300 Dues & Memberships	15,366	8,687	(289)	(11,296)	-	-	-	-	-	-	-	-	-	12,467	46,810	34,343
5400 Insurance	-	53,664	26,832	27,706	26,832	11,955	30,272	15,822	15,822	15,822	15,822	15,822	-	256,367	161,145	(95,222)
5900 Communications	(182)	72	107	-	-	-	-	-	-	-	-	-	-	(4)	7,854	7,858
5901 Postage and Shipping	-	-	166	-	-	-	20	-	-	-	-	-	-	186	46,641	46,455
	15,738	64,517	27,265	17,935	27,067	12,044	30,292	17,023	17,023	17,023	17,023	17,023	-	279,972	406,026	126,054

Cabrillo Point Academy
Monthly Cash Flow/Forecast FY19-20

Revised 02/27/20

ADA = 4445.69



	Jul-19	Aug-19	Sep-19	Oct-19	Nov-19	Dec-19	Jan-20	Feb-20	Mar-20	Apr-20	May-20	Jun-20	Year-End Accruals	Annual Forecast	Annual Budget	Favorable / (Unfav.)
Facilities, Repairs and Other Leases																
5601 Rent	34,231	39,491	35,989	(106,485)	1,153	-	-	-	-	-	-	-	-	4,378	551,732	547,355
5602 Additional Rent	125	2,431	1,278	125	-	-	(3,958)	-	-	-	-	-	-	-	1,425	1,425
5603 Equipment Leases	-	-	-	-	-	-	-	-	-	-	-	-	-	-	2,677	2,677
5605 Real/Personal Property Taxes	-	-	-	-	-	-	-	-	-	-	-	-	-	-	900	900
5610 Repairs and Maintenance	-	-	128	-	-	-	-	-	-	-	-	-	-	128	90,302	90,174
	34,356	41,922	37,394	(106,360)	2,170	-	(2,818)	-	-	-	-	-	-	6,663	647,036	640,374
Professional/Consulting Services																
5801 IT	-	-	-	1,363	-	-	-	-	-	-	-	-	-	1,363	11,387	10,025
5802 Audit & Taxes	-	-	-	-	-	5,400	-	-	-	-	-	-	-	5,400	9,281	3,881
5803 Legal	1,634	3,443	-	506	-	-	929	1,249	1,249	1,249	1,249	1,249	-	12,758	13,697	939
5804 Professional Development	-	125,700	194	(109)	127,292	104,828	-	-	-	-	-	-	-	357,905	66,243	(291,662)
5805 General Consulting	-	750	-	4,343	(1,085)	1,250	13,000	13,636	13,636	13,636	13,636	13,636	-	86,438	100,198	13,760
5806 Special Activities/Field Trips	61,713	85,469	101,185	24,405	18,403	8,067	8,128	26,848	23,973	14,782	17,022	15,380	-	405,375	1,324,772	919,397
5807 Bank Charges	-	1,612	4,574	4,377	4,909	4,679	5,056	5,134	5,134	5,134	5,134	5,134	-	50,876	75,423	24,547
5808 Printing	-	-	346	-	162	277	170	1,280	1,280	1,280	1,280	1,280	-	7,357	6,099	(1,258)
5809 Other taxes and fees	-	540	419	24	410	20	146	559	559	559	559	559	-	4,356	50,263	45,907
5811 Management Fee	69,938	72,324	237,828	126,697	126,697	126,697	126,696	109,350	104,225	104,225	104,225	104,225	-	1,413,127	1,150,843	(262,285)
5812 District Oversight Fee	-	-	-	-	-	-	-	-	-	-	-	-	403,751	403,751	298,768	(104,982)
5813 County Fees	-	1,856	-	-	-	-	-	-	-	-	-	-	-	1,856	-	(1,856)
5815 Public Relations/Recruitment	(100)	-	-	-	-	-	-	-	-	-	-	-	-	(100)	17,793	17,893
	133,185	291,695	344,547	161,606	276,788	251,218	154,125	158,057	150,057	140,865	143,106	141,464	403,751	2,750,462	3,124,767	374,305
Depreciation																
6900 Depreciation Expense	238	238	238	238	238	238	238	238	238	238	238	238	-	2,857	4,450	1,594
	238	238	238	238	238	238	238	238	238	238	238	238	-	2,857	4,450	1,594
Interest																
7438 Interest Expense	1,313	-	2,625	1,313	150,691	275,548	160,850	-	-	-	128,362	-	-	720,701	-	(720,701)
	1,313	-	2,625	1,313	150,691	275,548	160,850	-	-	-	128,362	-	-	720,701	-	(720,701)
Total Expenses	2,054,984	3,038,743	3,738,903	3,477,950	2,431,335	3,815,439	4,027,329	4,090,361	3,942,733	3,719,156	4,053,020	3,774,033	403,751	42,567,735	32,012,419	(10,555,317)
Monthly Surplus (Deficit)	(56,742)	(1,045,981)	(154,261)	148,106	1,027,033	(158,502)	524,695	(208,139)	412,173	365,422	(192,030)	909,150	195,099	1,766,023	868,801	897,222
Cash Flow Adjustments																
Monthly Surplus (Deficit)	(56,742)	(1,045,981)	(154,261)	148,106	1,027,033	(158,502)	524,695	(208,139)	412,173	365,422	(192,030)	909,150	195,099	1,766,023	868,801	897,222
Cash flows from operating activities																
Depreciation/Amortization	238	238	238	238	238	238	238	238	238	238	238	238	-	2,857		
Public Funding Receivables	582,888	397,480	-	579,878	-	-	83,240	-	-	-	-	-	(598,850)	1,044,636		
Grants and Contributions Rec.	-	-	-	15,640	(22,000)	(189)	(1,500)	-	-	-	-	-	-	(8,049)		
Due To/From Related Parties	3,043,255	1,471,140	4,658,685	1,594,563	(2,185,491)	(1,145,591)	(572,262)	669,215	-	-	-	(42,467)	-	7,491,047		
Prepaid Expenses	28,701	11,456	-	(54,074)	91,173	(542,986)	538,399	-	-	-	-	-	-	72,668		
Other Assets	-	250	-	-	-	-	-	-	-	-	-	-	-	250		
Accounts Payable	(1,211,892)	68,207	62,269	(16,085)	(1,305)	(171,821)	430,978	-	-	-	-	-	403,751	(435,899)		
Accrued Expenses	(341,281)	138,866	(177,724)	24,540	(52,908)	(131,269)	(119,061)	-	-	-	-	-	-	(658,837)		
Other Liabilities	3,871	-	-	5,422	-	-	-	-	-	-	-	-	-	9,293		
Cash flows from financing activities																
Proceeds from Factoring	-	-	-	-	-	5,463,400	2,995,600	-	-	-	3,209,038	-	-	11,668,038		
Payments on Factoring	(2,723,900)	-	(2,890,800)	(2,948,100)	-	(2,753,700)	(2,687,700)	(2,731,700)	-	(2,931,700)	(2,795,600)	-	-	(22,463,200)		
Payments on Debt	-	-	-	(105,000)	-	-	-	-	-	-	-	-	-	(105,000)		
Total Change in Cash	(674,863)	1,041,656	1,498,407	(754,872)	(1,143,260)	559,580	1,192,626	(2,270,386)	412,411	(2,566,040)	221,647	866,921				
Cash, Beginning of Month	4,067,860	3,392,997	4,434,653	5,933,061	5,178,189	4,034,929	4,594,509	5,787,135	3,516,749	3,929,160	1,363,120	1,584,766				
Cash, End of Month	3,392,997	4,434,653	5,933,061	5,178,189	4,034,929	4,594,509	5,787,135	3,516,749	3,929,160	1,363,120	1,584,766	2,451,687				

	4%
Cert.	Inst.
44.2%	89.4%
1,881,776	4,164,647

Pupil:Teacher Ratio	
22.45	:1

Cabrillo Point Academy

Budget vs Actual

For the period ended January 31, 2020

	Current Period Actual	Current Period Budget	Current Period Variance	Current Year Actual	YTD Budget	YTD Budget Variance	Total Budget
Revenues							
State Aid - Revenue Limit							
LCFF State Aid	\$ 3,368,384	\$3,395,579	\$ (27,195)	\$ 20,584,568	\$ 20,750,762	\$ (166,194)	\$ 28,987,729
Education Protection Account	-	-	-	432,052	432,052	-	665,570
In Lieu of Property Taxes	58,177	23,217	34,960	363,605	168,321	195,284	223,532
Total State Aid - Revenue Limit	3,426,561	3,418,796	7,765	21,380,225	21,351,136	29,089	29,876,831
Federal Revenue							
Special Education - Entitlement	-	-	-	-	-	-	513,062
Total Federal Revenue	-	-	-	-	-	-	513,062
Other State Revenue							
State Special Education	813,208	201,325	611,883	1,039,100	1,230,322	(191,222)	1,722,994
Mandated Cost	-	-	-	89,452	89,452	0	89,452
State Lottery	226,086	220,347	5,739	226,086	220,347	5,739	678,881
Prior Year Revenue	81,066	-	81,066	81,156	-	81,156	-
Other State Revenue	-	-	-	7,191	-	7,191	-
Total Other State Revenue	1,120,360	421,672	698,688	1,442,985	1,540,120	(97,136)	2,491,328
Other Local Revenue							
Lease and Rental Income	-	-	-	3,192	-	3,192	-
Interest Revenue	5,103	-	5,103	41,860	-	41,860	-
School Fundraising	-	-	-	769	-	769	-
Total Other Local Revenue	5,103	-	5,103	45,821	-	45,821	-
Total Revenues	\$ 4,552,024	\$3,840,468	\$ 711,556	\$ 22,869,031	\$ 22,891,256	\$ (22,225)	\$ 32,881,220
Expenses							
Certificated Salaries							
Teachers' Salaries	\$ 972,016	\$ 684,000	\$ (288,016)	\$ 6,705,458	\$ 4,788,000	\$ (1,917,458)	\$ 8,208,000
Teachers' Substitute Hours	-	-	-	3,150	-	(3,150)	-
Teachers' Extra Duty/Stipends	129,792	102,600	(27,192)	777,048	718,200	(58,848)	1,231,200
Pupil Support Salaries	29,236	11,667	(17,570)	212,351	81,667	(130,685)	140,000
Administrators' Salaries	92,446	90,000	(2,446)	659,542	630,000	(29,542)	1,080,000
Other Certificated Salaries	-	-	-	(4,056)	-	4,056	-
Total Certificated Salaries	1,223,491	888,267	(335,225)	8,353,494	6,217,867	(2,135,627)	10,659,200
Classified Salaries							
Instructional Salaries	22,339	-	(22,339)	114,996	-	(114,996)	-
Clerical and Office Staff Salaries	-	3,750	3,750	-	26,250	26,250	45,000
Other Classified Salaries	-	-	-	(12,168)	-	12,168	-
Total Classified Salaries	22,339	3,750	(18,589)	102,828	26,250	(76,578)	45,000
Benefits							
State Teachers' Retirement System, certificated positions	204,099	148,341	(55,759)	1,177,415	1,038,384	(139,031)	1,780,086
OASDI/Medicare/Alternative, certificated positions	1,357	233	(1,124)	7,664	1,628	(6,036)	2,790
Medicare/Alternative, certificated positions	17,636	12,934	(4,702)	119,690	90,540	(29,150)	155,211
Health and Welfare Benefits, certificated positions	153,478	93,333	(60,145)	952,492	653,333	(299,158)	1,120,000
State Unemployment Insurance, certificated positions	49,364	19,600	(29,764)	89,184	43,120	(46,064)	78,400
Workers' Compensation Insurance, certificated positions	12,200	12,488	288	98,804	87,418	(11,386)	149,859
Other Benefits, certificated positions	-	6,609	6,609	4,005	46,262	42,257	79,306
Total Benefits	438,135	293,538	(144,597)	2,449,253	1,960,684	(488,569)	3,365,652
Books & Supplies							
Books and Reference Materials	-	-	-	-	221,419	221,419	221,419
School Supplies	230,235	340,418	110,184	1,571,202	2,320,182	748,980	3,644,033
Software	32,547	63,074	30,526	145,813	441,515	295,702	756,883
Office Expense	1,993	9,977	7,984	14,413	69,840	55,427	119,726
Business Meals	-	174	174	2,551	1,216	(1,335)	2,085
Noncapitalized Equipment	36	77,335	77,299	5,552	527,093	521,541	827,842
Total Books & Supplies	264,811	490,978	226,167	1,739,532	3,581,266	1,841,734	5,571,988
Subagreement Services							
Special Education	317,571	108,291	(209,280)	1,050,024	758,038	(291,986)	1,299,493
Other Educational Consultants	1,002,006	290,293	(711,713)	3,566,836	1,978,546	(1,588,290)	3,107,466
Instructional Services	416,290	441,654	25,364	2,914,027	2,632,494	(281,532)	3,781,340
Total Subagreement Services	1,735,866	840,238	(895,628)	7,530,886	5,369,078	(2,161,808)	4,406,959

Cabrillo Point Academy

Budget vs Actual

For the period ended January 31, 2020

	Current Period Actual	Current Period Budget	Current Period Variance	Current Year Actual	YTD Budget	YTD Budget Variance	Total Budget
Operations & Housekeeping							
Auto and Travel	-	11,524	11,524	4,950	80,671	75,721	138,293
Dues & Memberships	-	3,901	3,901	12,467	27,306	14,839	46,810
Insurance	30,272	13,429	(16,843)	177,259	94,001	(83,258)	161,145
Utilities	-	186	186	-	1,299	1,299	2,226
Janitorial Services	-	255	255	-	1,782	1,782	3,056
Communications	-	655	655	(4)	4,582	4,586	7,854
Postage and Shipping	20	3,887	3,867	186	27,207	27,022	46,641
Total Operations & Housekeeping	30,292	33,835	3,544	194,858	236,848	41,990	406,026
Facilities, Repairs & Other Leases							
Rent	-	45,978	45,978	4,378	321,844	317,466	551,733
Additional Rent	(3,958)	119	4,077	-	831	831	1,425
Equipment Leases	-	223	223	-	1,561	1,561	2,677
Other Leases	1,140	-	(1,140)	2,157	-	(2,157)	-
Real/Personal Property Taxes	-	75	75	-	525	525	900
Repairs and Maintenance	-	7,525	7,525	128	52,676	52,548	90,302
Total Facilities, Repairs & Other Leases	(2,818)	53,920	56,738	6,663	377,438	370,775	647,036
Professional/Consulting Services							
IT	-	949	949	1,363	6,643	5,280	11,387
Audit & Taxes	-	-	-	5,400	9,281	3,881	9,281
Legal	929	1,141	213	6,511	7,990	1,479	13,697
Professional Development	-	5,520	5,520	357,905	38,642	(319,264)	66,243
General Consulting	13,000	8,350	(4,650)	18,258	58,449	40,191	100,198
Special Activities/Field Trips	8,128	123,758	115,630	307,370	843,492	536,121	1,324,772
Bank Charges	5,056	6,285	1,229	25,208	43,997	18,789	75,423
Printing	170	508	338	955	3,558	2,603	6,099
Other Taxes and Fees	146	4,189	4,043	1,560	29,320	27,760	50,263
Management Fee	126,696	134,416	7,720	886,878	801,194	(85,684)	1,150,843
District Oversight Fee	-	34,188	34,188	-	213,511	213,511	298,768
County Fees	-	-	-	1,856	-	(1,856)	-
Public Relations/Recruitment	-	1,483	1,483	(100)	10,379	10,479	17,793
Total Professional/Consulting Services	154,125	320,787	166,662	1,613,163	2,066,455	453,292	3,124,767
Depreciation							
Depreciation Expense	238	371	133	1,666	2,596	930	4,450
Total Depreciation	238	371	133	1,666	2,596	930	4,450
Interest							
Interest Expense	160,850	-	(160,850)	592,339	-	(592,339)	-
Total Interest	160,850	-	(160,850)	592,339	-	(592,339)	-
Total Expenses	\$ 4,027,329	\$2,925,684	\$ (1,101,645)	\$ 22,584,682	\$ 19,838,482	\$ (2,746,201)	\$ 28,231,078
Change in Net Assets	524,695	914,784	(390,089)	284,348	3,052,775	(2,768,426)	4,650,142
Net Assets, Beginning of Period	373,168			613,515			
Net Assets, End of Period	\$ 897,863			\$ 897,863			

Cabrillo Point Academy

Statement of Financial Position

January 31, 2020

	Current Balance	Beginning Year Balance	YTD Change	YTD % Change
Assets				
Current Assets				
Cash & Cash Equivalents	\$ 5,787,135	\$ 4,067,860	\$ 1,719,274	42%
Accounts Receivable	16,916	34,738	(17,822)	-51%
Public Funding Receivables	14,101	1,657,587	(1,643,486)	-99%
Factored Receivables	(11,190,700)	-	(11,190,700)	0%
Due To/From Related Parties	6,935,939	13,800,237	(6,864,298)	-50%
Prepaid Expenses	173,696	246,364	(72,668)	-29%
Total Current Assets	1,737,086	19,806,786	(18,069,700)	-91%
Long-Term Assets				
Property & Equipment, Net	52,530	54,196	(1,666)	-3%
Deposits	118,688	118,938	(250)	0%
Total Long Term Assets	171,218	173,134	(1,916)	-1%
Total Assets	\$ 1,908,304	\$ 19,979,920	\$ (18,071,617)	-90%
Liabilities				
Current Liabilities				
Accounts Payable	\$ 440,869	\$ 1,280,519	\$ (839,650)	-66%
Accrued Liabilities	491,074	1,149,912	(658,837)	-57%
Deferred Revenue	78,497	16,830,975	(16,752,478)	-100%
Notes Payable, Current Portion	-	105,000	(105,000)	-100%
Total Current Liabilities	1,010,440	19,366,406	(18,355,965)	-95%
Total Liabilities	1,010,440	19,366,406	(18,355,965)	-95%
Total Net Assets	897,863	613,515	284,348	46%
Total Liabilities and Net Assets	\$ 1,908,304	\$ 19,979,920	\$ (18,071,617)	-90%

Cabrillo Point Academy

Statement of Cash Flows

For the period ended January 31, 2020

	Month Ended 01/31/20	YTD Ended 01/31/20
Cash Flows from Operating Activities		
Change in Net Assets	\$ 524,695	\$ 284,348
Adjustments to reconcile change in net assets to net cash flows from operating activities:		
Depreciation	238	1,666
Decrease/(Increase) in Operating Assets:		
Public Funding Receivables	83,240	1,643,486
Grants, Contributions & Pledges Receivable	306,400	11,208,522
Due from Related Parties	(572,262)	6,864,298
Prepaid Expenses	538,399	72,668
Other Assets	-	250
(Decrease)/Increase in Operating Liabilities:		
Accounts Payable	430,978	(839,650)
Accrued Expenses	(119,061)	(658,837)
Deferred Revenue	-	(16,752,478)
Total Cash Flows from Operating Activities	1,192,626	1,824,274
Cash Flows from Financing Activities		
Proceeds from (payments on) Long-Term Debt	-	(105,000)
Total Cash Flows from Financing Activities	-	(105,000)
Change in Cash & Cash Equivalents	1,192,626	1,719,274
Cash & Cash Equivalents, Beginning of Period	4,594,509	4,067,860
Cash and Cash Equivalents, End of Period	\$ 5,787,135	\$ 5,787,135

Cabrillo Point Academy

Due (To)/From All Inspire Charter School Locations

For the period ended January 31, 2020

	Account Balance
Due (to)/from Inspire LA	\$ (1,181)
Due (to)/from Feather River Charter School	(114)
Due (to)/from Blue Ridge Academy	465,975
Due (to)/from Winship Community School	(42,467)
Due (to)/from Yosemite Valley Charter School	206,388
Due (to)/from Inspire Clarksville Charter School	0
Due (to)/from Pacific Coast Academy	296,882
Due (to)/from Inspire Charter Services	3,853,248
Due (to)/from Inspire Foundation	932,744
Due (to)/from Heartland Charter School	515,233
Due (to)/from Granite Mountain Charter School	40,014
Due (to)/from Mission Vista Academy	<u>669,215</u>
Total Due (to)/from Balance	<u><u>\$ 6,935,939</u></u>

Cabrillo Point Academy

Accounts Payable Aging

January 31, 2020

Vendor Name	Invoice/Credit Number	Invoice Date	Date Due	Current	1 - 30 Days Past Due	31 - 60 Days Past Due	61 - 90 Days Past Due	Over 90 Days Past Due	Total
100 Mile Club, Inc	100000811	11/15/2019	1/14/2020	\$ -	\$ 92	\$ -	\$ -	\$ -	\$ 92
A Thinking Place	1242	1/17/2020	2/16/2020	470	-	-	-	-	470
A Thinking Place	1250	1/25/2020	2/24/2020	380	-	-	-	-	380
A Thinking Place	1251	1/25/2020	2/9/2020	400	-	-	-	-	400
A Thinking Place	1252	1/25/2020	2/24/2020	335	-	-	-	-	335
A Thinking Place	1253	1/25/2020	2/24/2020	47	-	-	-	-	47
A Thinking Place	1254	1/25/2020	2/24/2020	48	-	-	-	-	48
A Thinking Place	1255	1/25/2020	2/24/2020	335	-	-	-	-	335
A Thinking Place	1256	1/25/2020	2/24/2020	225	-	-	-	-	225
A Thinking Place	1257	1/25/2020	2/9/2020	380	-	-	-	-	380
A Thinking Place	1258	1/25/2020	2/24/2020	225	-	-	-	-	225
A Thinking Place	1259	1/25/2020	2/24/2020	48	-	-	-	-	48
A Thinking Place	1260	1/25/2020	2/24/2020	335	-	-	-	-	335
A Thinking Place	1261	1/25/2020	2/24/2020	335	-	-	-	-	335
A Thinking Place	1263	1/25/2020	2/24/2020	225	-	-	-	-	225
A Thinking Place	1266	1/25/2020	2/24/2020	383	-	-	-	-	383
A Thinking Place	1267	1/25/2020	2/24/2020	380	-	-	-	-	380
Academics In A Box Inc	7543	1/15/2020	2/14/2020	168	-	-	-	-	168
Activities for Learning, Inc.	379401	1/14/2020	2/13/2020	153	-	-	-	-	153
Activities for Learning, Inc.	379424	1/15/2020	2/14/2020	167	-	-	-	-	167
Activities for Learning, Inc.	379436	1/17/2020	2/16/2020	82	-	-	-	-	82
Aesthetic Climbing Gym LLC	1020	1/13/2020	2/12/2020	280	-	-	-	-	280
Aesthetic Climbing Gym LLC	1021	1/13/2020	2/12/2020	1,035	-	-	-	-	1,035
Aliso Viejo Kumon Center	11420	1/14/2020	2/13/2020	970	-	-	-	-	970
Aliso Viejo Kumon Center	11421	1/14/2020	2/13/2020	490	-	-	-	-	490
Alison Albert	138	1/15/2020	2/14/2020	480	-	-	-	-	480
Alison Albert	139	1/15/2020	2/14/2020	600	-	-	-	-	600
Alkawthar Learning Center	ALKAW-I20-2002	1/16/2020	2/15/2020	265	-	-	-	-	265
All About Learning Press, Inc.	901565	12/12/2019	2/10/2020	32	-	-	-	-	32
All About Learning Press, Inc.	901568	12/12/2019	2/10/2020	155	-	-	-	-	155
All About Learning Press, Inc.	901603	12/18/2019	2/16/2020	96	-	-	-	-	96
All About Learning Press, Inc.	901605	12/18/2019	2/16/2020	23	-	-	-	-	23
All About Learning Press, Inc.	901610	12/18/2019	2/16/2020	155	-	-	-	-	155
All About Learning Press, Inc.	901613	12/18/2019	2/16/2020	155	-	-	-	-	155
All About Learning Press, Inc.	901633	1/2/2020	3/2/2020	111	-	-	-	-	111
All About Learning Press, Inc.	901722	1/15/2020	3/15/2020	47	-	-	-	-	47
All About Learning Press, Inc.	901739	1/16/2020	3/16/2020	179	-	-	-	-	179

Cabrillo Point Academy

Accounts Payable Aging

January 31, 2020

Vendor Name	Invoice/Credit Number	Invoice Date	Date Due	Current	1 - 30 Days Past Due	31 - 60 Days Past Due	61 - 90 Days Past Due	Over 90 Days Past Due	Total
All About Learning Press, Inc.	901755	1/30/2020	3/30/2020	51	-	-	-	-	51
All Star Driving School	3CPA	1/23/2020	2/22/2020	90	-	-	-	-	90
All Star Driving School	4CPA	1/20/2020	2/19/2020	260	-	-	-	-	260
Alyssa Westphal	1132020	1/13/2020	2/12/2020	2,185	-	-	-	-	2,185
American Academy Of Strategic Educal	JAN2020-02	1/28/2020	2/27/2020	1,080	-	-	-	-	1,080
American Academy Of Strategic Educal	JAN2020-CPA	1/13/2020	2/12/2020	17,969	-	-	-	-	17,969
Amy Roncevich	221	1/11/2020	2/10/2020	140	-	-	-	-	140
Amy Roncevich	222	1/11/2020	2/10/2020	140	-	-	-	-	140
Amy Roncevich	223	1/11/2020	2/10/2020	280	-	-	-	-	280
Amy Roncevich	224	1/24/2020	2/23/2020	70	-	-	-	-	70
Angele Nalbandian	002	1/22/2020	2/21/2020	1,710	-	-	-	-	1,710
Ann C. Shultz	1-CPA-8	1/18/2020	2/17/2020	50	-	-	-	-	50
Anna Rose	100	12/31/2019	1/30/2020	-	250	-	-	-	250
Apex School of Movement San Diego	079	1/24/2020	2/23/2020	110	-	-	-	-	110
Apex School of Movement San Diego	081	1/25/2020	2/24/2020	110	-	-	-	-	110
Aqua Pros Swim School	033	1/11/2020	2/10/2020	420	-	-	-	-	420
Aqua Tots ORANGE LLC	18	12/15/2019	1/14/2020	-	536	-	-	-	536
Aqua Tots ORANGE LLC	2_OR	1/23/2020	2/22/2020	215	-	-	-	-	215
Aqua Tots Swim School	603	1/20/2020	2/19/2020	221	-	-	-	-	221
Aqua Tots Swim School	604	1/28/2020	2/27/2020	221	-	-	-	-	221
Aqua Tots Swim School	777	12/16/2019	1/15/2020	-	215	-	-	-	215
Arlene Fliegler	249	1/23/2020	2/22/2020	700	-	-	-	-	700
Art in Motion	DEC29019	1/17/2020	2/16/2020	25	-	-	-	-	25
Art in Motion	DEC71330	1/13/2020	2/12/2020	110	-	-	-	-	110
Art in Motion	DEC75815	1/18/2020	2/17/2020	55	-	-	-	-	55
Art With Larisse	1002	11/19/2019	12/19/2019	-	-	1,276	-	-	1,276
Art With Larisse	1003	1/10/2020	2/9/2020	1,595	-	-	-	-	1,595
Art With Sara	10910	1/24/2020	2/23/2020	114	-	-	-	-	114
Artistic Dance Academy	1068	1/23/2020	2/22/2020	435	-	-	-	-	435
Arts & Learning Corporation	9633711-2	12/22/2019	2/14/2020	30	-	-	-	-	30
Assembly of the Wild	22YoussefMonPM	1/14/2020	2/13/2020	352	-	-	-	-	352
Assembly of the Wild	23AzharMonPM	1/14/2020	2/13/2020	176	-	-	-	-	176
Assembly of the Wild	24AhmedTuesPM	1/21/2020	2/20/2020	1,056	-	-	-	-	1,056
Assembly of the Wild	25QureshiMonPM	1/27/2020	2/26/2020	440	-	-	-	-	440
ASU Preparatory Academy	ARCM00001	12/19/2019	1/18/2020	-	(525)	-	-	-	(525)
ASU Preparatory Academy	INV01264	1/14/2020	2/13/2020	350	-	-	-	-	350
ASU Preparatory Academy	INV01265	1/14/2020	2/13/2020	700	-	-	-	-	700
ASU Preparatory Academy	INV01284	1/17/2020	2/16/2020	350	-	-	-	-	350
ASU Preparatory Academy	INV01304	1/27/2020	2/26/2020	350	-	-	-	-	350
ATA Success Martial Arts	100018	1/22/2020	2/21/2020	708	-	-	-	-	708

Cabrillo Point Academy

Accounts Payable Aging

January 31, 2020

Vendor Name	Invoice/Credit Number	Invoice Date	Date Due	Current	1 - 30 Days Past Due	31 - 60 Days Past Due	61 - 90 Days Past Due	Over 90 Days Past Due	Total
ATC Martial Arts	5166	1/26/2020	1/26/2020	-	1,369	-	-	-	1,369
ATC Martial Arts	5167	1/26/2020	1/26/2020	-	1,322	-	-	-	1,322
ATC Martial Arts	5168	1/26/2020	1/26/2020	-	1,122	-	-	-	1,122
ATG, Inc. DBA Urban Workshop	7872	2/1/2019	2/1/2019	-	-	-	-	800	800
Austin Pacheco-Timmerman	6	1/14/2020	2/13/2020	825	-	-	-	-	825
Autism Spectrum Therapies	2302912	12/13/2019	12/27/2019	-	-	100	-	-	100
Barbara Infranca	IvyG11/19R	1/30/2020	2/29/2020	294	-	-	-	-	294
Barbara Infranca	LH12020	1/30/2020	2/29/2020	240	-	-	-	-	240
Barbara Infranca	OliveG 11/19R	1/30/2020	2/29/2020	294	-	-	-	-	294
Beach Cities Rock Club	32	1/18/2020	2/17/2020	2,365	-	-	-	-	2,365
Beautiful Feet Books, Inc.	11446	12/20/2019	2/18/2020	28	-	-	-	-	28
Beautiful Feet Books, Inc.	11485	1/16/2020	3/16/2020	205	-	-	-	-	205
Beautiful Feet Books, Inc.	11505	1/24/2020	3/24/2020	221	-	-	-	-	221
Bitsbox	2476	1/15/2020	3/15/2020	168	-	-	-	-	168
Bitsbox	2499	1/25/2020	1/25/2020	-	252	-	-	-	252
Bitsbox	2500	1/25/2020	3/25/2020	129	-	-	-	-	129
Bitsbox	2501	1/25/2020	3/25/2020	129	-	-	-	-	129
Blue Buoy Swim School, Inc.	10628	1/31/2020	1/31/2020	1,530	-	-	-	-	1,530
BookShark	30983085	1/17/2020	2/16/2020	891	-	-	-	-	891
Brain Builders STEM Education	01042020	1/15/2020	2/14/2020	1,053	-	-	-	-	1,053
Brave Writer LLC	53372CM	10/1/2019	10/31/2019	-	-	-	-	(79)	(79)
Brave Writer LLC	53668478	1/9/2020	2/8/2020	67	-	-	-	-	67
Brave Writer LLC	54018226	1/13/2020	2/12/2020	239	-	-	-	-	239
Brave Writer LLC	54246408	1/13/2020	2/12/2020	239	-	-	-	-	239
Brave Writer LLC	54536890	1/20/2020	2/19/2020	229	-	-	-	-	229
Breakthrough Sports	11620a	1/16/2020	2/15/2020	235	-	-	-	-	235
Breakthrough Sports	11620b	1/16/2020	2/15/2020	260	-	-	-	-	260
Breakthrough Sports	11620C	1/16/2020	2/15/2020	235	-	-	-	-	235
Breakthrough Sports	11620d	1/16/2020	2/15/2020	235	-	-	-	-	235
Breakthrough Sports	12320h	1/23/2020	2/22/2020	235	-	-	-	-	235
Breakthrough Sports	12320i	1/23/2020	2/22/2020	235	-	-	-	-	235
Breakthrough Sports	12320j	1/23/2020	2/22/2020	235	-	-	-	-	235
Bright Solutions For Dyslexia, LLC	88-82552	1/15/2020	2/14/2020	330	-	-	-	-	330
Brittany Doan	FA2019	1/28/2020	2/27/2020	1,600	-	-	-	-	1,600
Brittany Greer	1050	1/23/2020	2/22/2020	300	-	-	-	-	300
Brittany Greer	1053	1/24/2020	2/23/2020	950	-	-	-	-	950
Cadence Dance Project	0017	1/14/2020	2/13/2020	480	-	-	-	-	480
Cadence Dance Project	0018	1/14/2020	2/13/2020	480	-	-	-	-	480
Cadence Dance Project	0019	1/15/2020	2/14/2020	240	-	-	-	-	240
Capistrano Dance	042	1/23/2020	2/22/2020	120	-	-	-	-	120

Cabrillo Point Academy

Accounts Payable Aging

January 31, 2020

Vendor Name	Invoice/Credit Number	Invoice Date	Date Due	Current	1 - 30 Days Past Due	31 - 60 Days Past Due	61 - 90 Days Past Due	Over 90 Days Past Due	Total
Capistrano Dance	043	1/23/2020	2/22/2020	120	-	-	-	-	120
Capistrano Dance	044	1/23/2020	2/22/2020	165	-	-	-	-	165
Charlotte Littlehales	01132020	1/13/2020	2/12/2020	720	-	-	-	-	720
Charlotte Littlehales	01262020	1/25/2020	2/24/2020	160	-	-	-	-	160
Charter's Choice Educational Services	351	1/19/2020	2/18/2020	1,000	-	-	-	-	1,000
CharterSafe	29144	11/1/2019	11/1/2019	-	-	-	-	2,867	2,867
CharterSafe	29163	12/1/2019	12/1/2019	-	-	-	1,720	-	1,720
CharterSafe	29330	1/1/2020	1/1/2020	-	1,720	-	-	-	1,720
CharterSafe	29578	2/1/2020	2/1/2020	1,720	-	-	-	-	1,720
Christine Benedict	26	1/24/2020	2/23/2020	70	-	-	-	-	70
Christy Hernandez	JAN2020	1/28/2020	2/27/2020	1,050	-	-	-	-	1,050
Coachella Valley Music Therapy	589	1/15/2020	2/14/2020	140	-	-	-	-	140
Coast Music Therapy	12575	1/17/2020	2/16/2020	505	-	-	-	-	505
Cornerstone Therapies	58700	12/31/2019	1/30/2020	-	200	-	-	-	200
Cornerstone Therapies	58704	12/31/2019	1/30/2020	-	450	-	-	-	450
Cornerstone Therapies	58706	12/31/2019	1/30/2020	-	500	-	-	-	500
Cornerstone Therapies	58707	12/31/2019	1/30/2020	-	350	-	-	-	350
Cornerstone Therapies	58708	12/31/2019	1/30/2020	-	450	-	-	-	450
Creative Kids Playhouse Children's The	2020-01	1/14/2020	2/13/2020	255	-	-	-	-	255
CrossFit Flood	20019005	1/23/2020	2/22/2020	640	-	-	-	-	640
CYT - Christian Youth Theater Riverside	89	1/23/2020	2/22/2020	310	-	-	-	-	310
Daniel Newheiser	1120191	12/6/2019	1/5/2020	-	243	-	-	-	243
David Reuther Vocal Studio	2718	12/29/2019	2/28/2020	405	-	-	-	-	405
Define Dance Space	1018CPA	1/20/2020	2/19/2020	660	-	-	-	-	660
Define Dance Space	1019CPA	1/22/2020	1/21/2020	-	780	-	-	-	780
Dejitaru Karate Dojo	Campbell - 1	1/1/2020	1/31/2020	340	-	-	-	-	340
Dejitaru Karate Dojo	Moore - 1	1/1/2020	1/31/2020	180	-	-	-	-	180
Dejitaru Karate Dojo	Moore - 12	12/1/2019	12/31/2019	-	-	130	-	-	130
Discovery of Learning, LLC	IS1019CM	10/1/2019	10/31/2019	-	-	-	-	(2,100)	(2,100)
Dmitri Kulev Classical Ballet Academy	010-2019	1/16/2020	2/15/2020	500	-	-	-	-	500
Document Tracking Services	T-910100019	1/2/2020	2/1/2020	805	-	-	-	-	805
DOJO by Leo Vieira, LLC	1	1/16/2020	2/15/2020	713	-	-	-	-	713
Donn Boyd	13	1/28/2020	2/27/2020	100	-	-	-	-	100
Douglas Bartolme	8	1/11/2020	2/10/2020	210	-	-	-	-	210
Drama Kids Intl. Temecula Valley	1025	1/13/2020	2/12/2020	1,380	-	-	-	-	1,380
Drawn2Art	CPA012020	1/20/2020	2/19/2020	238	-	-	-	-	238
Drew's Art Box LLC	6336-5920	12/19/2019	1/18/2020	-	180	-	-	-	180
Drivers Ed Direct	1086	1/23/2020	2/22/2020	39	-	-	-	-	39
Dynamic Therapy Solutions	8145-1219	1/3/2020	2/2/2020	990	-	-	-	-	990
E-Therapy LLC	11084	1/15/2020	2/14/2020	2,690	-	-	-	-	2,690

Cabrillo Point Academy

Accounts Payable Aging

January 31, 2020

Vendor Name	Invoice/Credit Number	Invoice Date	Date Due	Current	1 - 30 Days Past Due	31 - 60 Days Past Due	61 - 90 Days Past Due	Over 90 Days Past Due	Total
Earthroots Field School, Inc	3159	1/15/2020	2/14/2020	469	-	-	-	-	469
Earthroots Field School, Inc	3160	1/15/2020	2/14/2020	455	-	-	-	-	455
Eden Learning Academy	1339	11/1/2019	11/30/2019	-	-	-	310	-	310
Education Planet, Inc.	2270	1/23/2020	1/23/2020	-	72	-	-	-	72
Education.com Holdings, Inc.	8391	1/21/2020	2/20/2020	120	-	-	-	-	120
Education.com Holdings, Inc.	8398	1/21/2020	2/20/2020	60	-	-	-	-	60
Educational Development Corporation DIR5415605		1/17/2020	2/16/2020	21	-	-	-	-	21
Educational Development Corporation DIR5425404		1/20/2020	2/19/2020	84	-	-	-	-	84
Educational Development Corporation DIR5425408		1/20/2020	2/19/2020	197	-	-	-	-	197
Educational Development Corporation DIR5439679		1/23/2020	2/22/2020	194	-	-	-	-	194
Educational Development Corporation DIR5439680		1/23/2020	2/22/2020	110	-	-	-	-	110
eDynamic Learning	20-0066	1/17/2020	2/16/2020	170	-	-	-	-	170
eDynamic Learning	20-0084	1/28/2020	2/27/2020	85	-	-	-	-	85
eDynamic Learning	20-0085	1/28/2020	2/27/2020	85	-	-	-	-	85
eDynamic Learning	20-0086	1/28/2020	2/27/2020	85	-	-	-	-	85
eDynamic Learning	20-0087	1/28/2020	2/27/2020	170	-	-	-	-	170
eDynamic Learning	20-0088	1/28/2020	2/27/2020	530	-	-	-	-	530
eDynamic Learning	20-0089	1/28/2020	2/27/2020	85	-	-	-	-	85
eDynamic Learning	20-0090	1/28/2020	2/27/2020	85	-	-	-	-	85
Elemental Science	IN-2031	1/24/2020	2/23/2020	18	-	-	-	-	18
Elemental Science	IN-2032	1/24/2020	2/23/2020	165	-	-	-	-	165
Elemental Science	IN-2033	1/24/2020	2/23/2020	167	-	-	-	-	167
Elizabeth Sledge Music	1068	1/27/2020	2/26/2020	500	-	-	-	-	500
Emily Nguyen	11	1/24/2020	2/23/2020	500	-	-	-	-	500
Emma Freed	72	1/15/2020	2/14/2020	56	-	-	-	-	56
Emma Freed	74	1/23/2020	2/22/2020	56	-	-	-	-	56
Encore School of Music, Inc	INV-2233	1/15/2020	2/14/2020	1,530	-	-	-	-	1,530
Encore School of Music, Inc	INV-2588	1/15/2020	2/14/2020	414	-	-	-	-	414
Evan-Moor	INV265098	1/17/2020	2/16/2020	19	-	-	-	-	19
Evan-Moor	INV265568	1/24/2020	2/23/2020	365	-	-	-	-	365
Evan-Moor	INV265569	1/24/2020	2/23/2020	402	-	-	-	-	402
Evan-Moor	INV265832	1/28/2020	2/27/2020	39	-	-	-	-	39
Faction Martial Arts LLC	28575-C009-CPA	1/16/2020	2/15/2020	274	-	-	-	-	274
Faction Martial Arts LLC	28575-C012-CPA	1/28/2020	2/27/2020	411	-	-	-	-	411
Fazila Parekh	1005	1/23/2020	2/22/2020	2,650	-	-	-	-	2,650
Fine Art Classes, Inc.	0925678-IN	12/31/2019	12/31/2019	-	-	210	-	-	210
Fine Art Classes, Inc.	0925679-IN	12/31/2019	12/31/2019	-	-	235	-	-	235
Fine Art Classes, Inc.	0925680-IN	12/31/2019	12/31/2019	-	-	108	-	-	108
Five Star Sports	20205P05	1/24/2020	2/23/2020	230	-	-	-	-	230
Foundations Academy	17	1/24/2020	2/23/2020	1,000	-	-	-	-	1,000

Cabrillo Point Academy

Accounts Payable Aging

January 31, 2020

Vendor Name	Invoice/Credit Number	Invoice Date	Date Due	Current	1 - 30 Days Past Due	31 - 60 Days Past Due	61 - 90 Days Past Due	Over 90 Days Past Due	Total
Fountain Valley Skating Center	201	1/15/2020	2/14/2020	1,175	-	-	-	-	1,175
Francoise Van Der Linde	1232020	1/23/2020	2/22/2020	320	-	-	-	-	320
Francoise Van Der Linde	1262020	1/26/2020	2/25/2020	480	-	-	-	-	480
Fresh Ed North	S20-CPA-009	1/24/2020	2/23/2020	1,770	-	-	-	-	1,770
Friends of Willow Tree	4045	1/21/2019	2/20/2019	-	-	-	-	816	816
Frozen Ropes	01232020	1/23/2020	2/22/2020	175	-	-	-	-	175
Gabriella Berry	202001-02-DB	1/24/2020	2/23/2020	450	-	-	-	-	450
Gail Shafer	INS122019HSB	12/20/2019	1/19/2020	-	100	-	-	-	100
Gary Spatz: The Playground: A Young A	JH2	1/14/2020	2/13/2020	580	-	-	-	-	580
Generation Genius, Inc	GG0019974	1/22/2020	2/21/2020	120	-	-	-	-	120
Gracie San Diego, LLC	2019-464333	12/9/2019	1/8/2020	-	99	-	-	-	99
Gracie San Diego, LLC	2020-002419	1/9/2020	2/8/2020	297	-	-	-	-	297
Gracie San Diego, LLC	2020-002464	1/9/2020	2/8/2020	297	-	-	-	-	297
Gracie San Diego, LLC	2020-013387	1/21/2020	2/20/2020	109	-	-	-	-	109
Gracie San Diego, LLC	2020-015494	1/16/2020	2/15/2020	109	-	-	-	-	109
Greater Perception Services, Inc.	009	1/27/2020	2/26/2020	1,440	-	-	-	-	1,440
Green Art Labs	063	1/26/2020	2/25/2020	200	-	-	-	-	200
Growing Minds, LLC	32842-USD	12/18/2019	2/16/2020	225	-	-	-	-	225
Guo's Elite dba World Elite Gymnastics	CPA1011122019	1/14/2020	2/13/2020	400	-	-	-	-	400
Gymninny Kids	1097	1/16/2020	2/15/2020	935	-	-	-	-	935
Hallelujah Tae Kwon Do	2020-018691	1/27/2020	2/26/2020	430	-	-	-	-	430
Hallelujah Tae Kwon Do	2020-018697	1/27/2020	2/26/2020	430	-	-	-	-	430
Hania Chaudhry	CPA002	1/22/2020	2/21/2020	6,700	-	-	-	-	6,700
Harmony Studios	113	1/23/2020	2/22/2020	1,138	-	-	-	-	1,138
Hart Academy of Dance	29	1/15/2020	2/14/2020	891	-	-	-	-	891
Hart Academy of Dance	30	1/21/2020	2/20/2020	165	-	-	-	-	165
Hart Academy of Dance	31	1/23/2020	2/22/2020	165	-	-	-	-	165
Hart Academy of Dance	32	1/23/2020	2/22/2020	276	-	-	-	-	276
Heart and Hooves Therapy	2KS	10/2/2019	11/1/2019	-	-	-	-	25	25
Heart and Hooves Therapy	3KS	11/20/2019	12/20/2019	-	-	50	-	-	50
Hiddleson Listening, Language, and Sp	123119RB	12/31/2019	1/30/2020	-	600	-	-	-	600
Hiddleson Listening, Language, and Sp	123119SC	12/31/2019	1/30/2020	-	600	-	-	-	600
Holly Franz	57	1/15/2020	2/14/2020	555	-	-	-	-	555
Home Science Tools	970252A	12/12/2019	2/10/2020	27	-	-	-	-	27
Home Science Tools	975058A	1/6/2020	3/6/2020	31	-	-	-	-	31
Home Science Tools	976776A	1/10/2020	3/10/2020	96	-	-	-	-	96
Home Science Tools	977801A	1/14/2020	3/14/2020	526	-	-	-	-	526
Home Science Tools	978749A	1/11/2020	3/11/2020	512	-	-	-	-	512
Home Science Tools	978761A	1/17/2020	3/17/2020	34	-	-	-	-	34
Home Science Tools	978764A	1/17/2020	3/17/2020	26	-	-	-	-	26

Cabrillo Point Academy

Accounts Payable Aging

January 31, 2020

Vendor Name	Invoice/Credit Number	Invoice Date	Date Due	Current	1 - 30 Days Past Due	31 - 60 Days Past Due	61 - 90 Days Past Due	Over 90 Days Past Due	Total
Homeschool Concierge	591-20-C	1/6/2020	2/5/2020	169	-	-	-	-	169
Homeschool Concierge	690	9/26/2019	10/26/2019	-	-	-	-	(15,640)	(15,640)
Honest History Co.	1064	1/13/2020	2/12/2020	74	-	-	-	-	74
Hooked on Phonics	HOP1014	12/9/2019	1/8/2020	-	55	-	-	-	55
Hooked on Phonics	HOP107	12/9/2019	1/8/2020	-	43	-	-	-	43
Hooves Of Laguna Springs	CBP004	1/29/2020	2/28/2020	140	-	-	-	-	140
Hospitality Eyecare Center	10392	1/15/2020	2/14/2020	250	-	-	-	-	250
Houghton Mifflin Harcourt Publishing (911277719		7/30/2019	8/29/2019	-	-	-	-	(177)	(177)
Houghton Mifflin Harcourt Publishing (911277733		7/30/2019	8/29/2019	-	-	-	-	(87)	(87)
Houghton Mifflin Harcourt Publishing (911285671		9/10/2019	10/10/2019	-	-	-	-	(315)	(315)
Houghton Mifflin Harcourt Publishing (911300131		11/20/2019	11/20/2019	-	-	-	(126)	-	(126)
Huntington Beach	21288-C010-CPA	1/23/2020	2/22/2020	154	-	-	-	-	154
Huntington Beach	83567-C002-CPA	1/23/2020	2/22/2020	92	-	-	-	-	92
I9 Sports	35	1/13/2020	2/12/2020	189	-	-	-	-	189
IL-Do Taekwondo	6	1/14/2020	2/13/2020	1,197	-	-	-	-	1,197
IL-Do Taekwondo	7	1/24/2020	2/23/2020	600	-	-	-	-	600
iMath	20201	1/17/2020	2/16/2020	9,314	-	-	-	-	9,314
Inland Empire Musical Arts	LARDEC2019	1/11/2020	2/10/2020	300	-	-	-	-	300
Inspire In-Home Tutoring, Inc.	9888	1/23/2020	2/22/2020	200	-	-	-	-	200
Inspire School of Ballet	136	1/13/2020	2/12/2020	290	-	-	-	-	290
Inspire School of Ballet	137	1/23/2020	2/22/2020	585	-	-	-	-	585
Institute for Excellence in Writing	645259	1/14/2020	2/13/2020	105	-	-	-	-	105
Institute for Excellence in Writing	645280	1/14/2020	2/13/2020	140	-	-	-	-	140
Institute for Excellence in Writing	645680	1/14/2020	2/13/2020	77	-	-	-	-	77
Institute for Excellence in Writing	645863	1/16/2020	2/16/2020	22	-	-	-	-	22
Institute for Excellence in Writing	645879	1/16/2020	2/16/2020	22	-	-	-	-	22
Institute for Excellence in Writing	645983	1/16/2020	2/16/2020	37	-	-	-	-	37
Institute for Excellence in Writing	646807	1/23/2020	2/22/2020	205	-	-	-	-	205
Irvine Therapy Services, Inc.	112019 B	12/1/2019	12/31/2019	-	-	1,200	-	-	1,200
iTennis	20201	1/22/2020	2/21/2020	300	-	-	-	-	300
J. Six Studios	003	1/22/2020	2/21/2020	120	-	-	-	-	120
J.E.M.S. Dance Center	20 01 CPA	1/21/2020	2/20/2020	4,169	-	-	-	-	4,169
Jacaranda Music Studios, LLC	12012	1/28/2020	1/28/2020	-	376	-	-	-	376
Jacaranda Music Studios, LLC	12013	1/28/2020	1/28/2020	-	376	-	-	-	376
Jaimie Long	007	1/23/2020	2/22/2020	480	-	-	-	-	480
Jane Masur	20201	1/28/2020	2/27/2020	455	-	-	-	-	455
JC Teach, Inc.	1235	1/27/2020	2/26/2020	110	-	-	-	-	110
Jennifer Mercer	2	1/15/2020	2/14/2020	650	-	-	-	-	650
JF Shea Therapeutic Riding Center, Inc. 22798		1/23/2020	2/7/2020	200	-	-	-	-	200
John Guminiak	7	1/14/2020	2/13/2020	300	-	-	-	-	300

Cabrillo Point Academy

Accounts Payable Aging

January 31, 2020

Vendor Name	Invoice/Credit Number	Invoice Date	Date Due	Current	1 - 30 Days Past Due	31 - 60 Days Past Due	61 - 90 Days Past Due	Over 90 Days Past Due	Total
Joyce M Garcia	116202	1/16/2020	2/15/2020	720	-	-	-	-	720
Joyce M Garcia	117202	1/16/2020	2/15/2020	720	-	-	-	-	720
Joyce M Garcia	1182020	1/16/2020	2/15/2020	540	-	-	-	-	540
Julia J. Bietz	2019-394717	10/14/2019	11/13/2019	-	-	-	263	-	263
Julia J. Bietz	2020-000085	1/17/2020	2/16/2020	420	-	-	-	-	420
Julia J. Bietz	2020-001415	1/17/2020	2/16/2020	263	-	-	-	-	263
Julia J. Bietz	2020-001421	1/17/2020	2/16/2020	263	-	-	-	-	263
Julia J. Bietz	2020-001431	1/17/2020	2/16/2020	525	-	-	-	-	525
Julie Brennan - Living Math	2020-29	1/13/2020	2/12/2020	360	-	-	-	-	360
Julie Carmona Studios	INV0108	12/11/2019	12/23/2020	120	-	-	-	-	120
Julie Gatlin	86	1/25/2020	2/24/2020	250	-	-	-	-	250
Juliet Aucreman	12	1/29/2020	2/28/2020	580	-	-	-	-	580
Juliet Aucreman	13	1/29/2020	2/28/2020	65	-	-	-	-	65
Jump and Schout Therapy, Inc.	17371	12/31/2019	1/30/2020	-	450	-	-	-	450
Jump and Schout Therapy, Inc.	17372	12/31/2019	1/30/2020	-	260	-	-	-	260
Jump and Schout Therapy, Inc.	17373	12/31/2019	1/30/2020	-	390	-	-	-	390
Jump and Schout Therapy, Inc.	17374	12/31/2019	1/30/2020	-	260	-	-	-	260
Jump and Schout Therapy, Inc.	17375	12/31/2019	1/30/2020	-	520	-	-	-	520
Jump and Schout Therapy, Inc.	17376	12/31/2019	1/30/2020	-	260	-	-	-	260
JYS Taekwondo	20051	1/25/2020	2/24/2020	891	-	-	-	-	891
K.I.D.S. Therapy Associates, Inc.	166637-CPOT	11/30/2019	1/14/2020	-	160	-	-	-	160
K.I.D.S. Therapy Associates, Inc.	166648-CPSP	12/31/2019	2/14/2020	312	-	-	-	-	312
K.I.D.S. Therapy Associates, Inc.	166650-CPOT	12/31/2019	2/14/2020	245	-	-	-	-	245
Karate For All	FEB 2020 0196	1/20/2020	2/19/2020	396	-	-	-	-	396
Karate For All	FEB 2020 0355	1/20/2020	2/1/2020	180	-	-	-	-	180
Karis Academy	20200116CP1	1/16/2020	2/15/2020	214	-	-	-	-	214
Karis Academy	20200116JAC	1/16/2020	1/16/2020	-	503	-	-	-	503
Karis Academy	20200116JOC	1/16/2020	1/16/2020	-	558	-	-	-	558
Kathleen Crady	1491	1/19/2020	2/18/2020	330	-	-	-	-	330
Kathleen Crady	1492	1/19/2020	2/18/2020	350	-	-	-	-	350
Kelly Saldivar	16	1/28/2020	2/27/2020	200	-	-	-	-	200
Kenyon's Soo Bahk Do	011520PB	1/15/2020	2/14/2020	275	-	-	-	-	275
Kick It Up Kidz, LLC	59	12/15/2019	1/14/2020	-	4,405	-	-	-	4,405
Kickforce Martial Arts	251	1/20/2020	2/19/2020	900	-	-	-	-	900
Kickforce Martial Arts	252	1/20/2020	2/19/2020	900	-	-	-	-	900
Kickforce Martial Arts	253	1/20/2020	2/19/2020	900	-	-	-	-	900
Kickforce Martial Arts	254	1/20/2020	2/19/2020	900	-	-	-	-	900
Kickforce Martial Arts	255	1/20/2020	2/19/2020	900	-	-	-	-	900
Kickforce Martial Arts	256	1/23/2020	2/22/2020	747	-	-	-	-	747
Kickforce Martial Arts	257	1/27/2020	2/26/2020	335	-	-	-	-	335

Cabrillo Point Academy

Accounts Payable Aging

January 31, 2020

Vendor Name	Invoice/Credit Number	Invoice Date	Date Due	Current	1 - 30 Days Past Due	31 - 60 Days Past Due	61 - 90 Days Past Due	Over 90 Days Past Due	Total
Kickforce Martial Arts	258	1/29/2020	2/28/2020	335	-	-	-	-	335
Kickforce Martial Arts	259	1/29/2020	2/28/2020	335	-	-	-	-	335
Kickforce Martial Arts	260	1/29/2020	2/28/2020	335	-	-	-	-	335
Kidslife	3	1/12/2020	2/11/2020	1,350	-	-	-	-	1,350
Kimberly Packard	12	1/25/2020	2/24/2020	320	-	-	-	-	320
Kimberly Veloz	27	1/27/2020	2/26/2020	120	-	-	-	-	120
Kitchen Kid, LLC	438521606	1/23/2020	2/22/2020	145	-	-	-	-	145
Kitchen Kid, LLC	438521623	1/23/2020	2/22/2020	145	-	-	-	-	145
Kitchen Kid, LLC	438521630	1/23/2020	2/22/2020	145	-	-	-	-	145
Kitchen Kid, LLC	438521631	1/23/2020	2/22/2020	145	-	-	-	-	145
Kitchen Kid, LLC	438521633	1/23/2020	2/22/2020	145	-	-	-	-	145
Kitchen Kid, LLC	438522133	1/23/2020	2/22/2020	49	-	-	-	-	49
Kitchen Kid, LLC	438522631	1/23/2020	2/22/2020	22	-	-	-	-	22
KiwiCo, Inc.	ST-IA4LHXZA	1/14/2020	2/28/2020	172	-	-	-	-	172
KiwiCo, Inc.	ST-IAPAAMFA	1/14/2020	2/28/2020	119	-	-	-	-	119
KiwiCo, Inc.	ST-IAVVUB7A	1/14/2020	2/28/2020	119	-	-	-	-	119
KiwiCo, Inc.	ST-IBJEVO5Q	1/14/2020	2/28/2020	120	-	-	-	-	120
KiwiCo, Inc.	ST-IBV6DGCA	1/14/2020	2/28/2020	119	-	-	-	-	119
KiwiCo, Inc.	ST-ICN3RW4Q	1/14/2020	2/28/2020	175	-	-	-	-	175
KiwiCo, Inc.	ST-ID5TXGLI	1/13/2020	2/27/2020	119	-	-	-	-	119
KiwiCo, Inc.	ST-IFYNJPAY	1/7/2020	2/21/2020	221	-	-	-	-	221
KiwiCo, Inc.	ST-IG7BVZKA	1/14/2020	2/28/2020	119	-	-	-	-	119
KiwiCo, Inc.	ST-IGKPBDMQ	1/14/2020	2/28/2020	97	-	-	-	-	97
KiwiCo, Inc.	ST-IGQBQHQ	1/14/2020	2/28/2020	172	-	-	-	-	172
KiwiCo, Inc.	ST-IGVBIITA	1/14/2020	2/28/2020	175	-	-	-	-	175
KiwiCo, Inc.	ST-IJ4IGF2I	1/7/2020	2/21/2020	221	-	-	-	-	221
KiwiCo, Inc.	ST-IJJSY7Y	1/3/2020	2/17/2020	97	-	-	-	-	97
KiwiCo, Inc.	ST-IKQP4JPQ	1/7/2020	1/21/2020	-	97	-	-	-	97
KiwiCo, Inc.	ST-IKT14P5A	1/7/2020	2/21/2020	65	-	-	-	-	65
KiwiCo, Inc.	ST-IMRE6BWQ	1/6/2020	2/20/2020	221	-	-	-	-	221
KiwiCo, Inc.	ST-IPAATOOQ	1/7/2020	2/21/2020	119	-	-	-	-	119
KiwiCo, Inc.	ST-IPDLNQLQ	1/7/2020	2/21/2020	119	-	-	-	-	119
Kristen Lee	19007	1/23/2020	2/22/2020	1,900	-	-	-	-	1,900
Kristi Frisby	2019-493266	1/21/2020	2/20/2020	510	-	-	-	-	510
Kristi Frisby	2020-0001234	1/21/2020	2/20/2020	280	-	-	-	-	280
Kristi Frisby	2020-000482	1/13/2020	2/12/2020	140	-	-	-	-	140
Kumon Center Orange - North	26	1/18/2020	2/17/2020	840	-	-	-	-	840
LA Acting Studios	157	1/23/2020	1/30/2020	-	220	-	-	-	220
Lakewood Family YMCA	BRADLEY-R-00008	1/22/2020	2/21/2020	237	-	-	-	-	237
Laura Meer	01262007	1/26/2020	2/25/2020	160	-	-	-	-	160

Cabrillo Point Academy

Accounts Payable Aging

January 31, 2020

Vendor Name	Invoice/Credit Number	Invoice Date	Date Due	Current	1 - 30 Days Past Due	31 - 60 Days Past Due	61 - 90 Days Past Due	Over 90 Days Past Due	Total
Laurie Capalbo	01212020-CPA	1/21/2020	2/20/2020	1,200	-	-	-	-	1,200
Learning Without Tears	INV53077	12/10/2019	1/9/2020	-	45	-	-	-	45
Learning Without Tears	INV53101	12/10/2019	1/9/2020	-	164	-	-	-	164
Learning Without Tears	INV53852	1/15/2020	2/14/2020	29	-	-	-	-	29
Learning Without Tears	INV53871	1/15/2020	2/14/2020	29	-	-	-	-	29
Learning Without Tears	INV54202	1/20/2020	2/19/2020	80	-	-	-	-	80
Learningherbs.com, LLC	348	1/13/2020	2/12/2020	184	-	-	-	-	184
LEGO Education	1190413123	12/19/2019	2/17/2020	539	-	-	-	-	539
LEGO Education	1190417180	1/29/2020	3/29/2020	359	-	-	-	-	359
LEGO Education	1190417253	1/14/2020	3/14/2020	240	-	-	-	-	240
LEGO Education	1190418492	1/24/2020	3/24/2020	194	-	-	-	-	194
LEGO Education	1190418655	1/27/2020	3/27/2020	351	-	-	-	-	351
Lenore Johnson	1-192020	1/19/2020	2/18/2020	150	-	-	-	-	150
Let's Communicate, Inc.	25720	12/12/2019	1/11/2020	-	115	-	-	-	115
Lexia Learners with Coach Jess	0000185	1/14/2020	2/14/2020	490	-	-	-	-	490
Liliana Harris	1CRUZ ARNSEN	1/24/2020	2/23/2020	240	-	-	-	-	240
Lindamood-Bell Learning Processes	SIN182539	12/30/2019	2/28/2020	3,120	-	-	-	-	3,120
Living Coast Discovery Center	121819	1/17/2020	2/16/2020	13	-	-	-	-	13
Logic of English	INV8520	1/23/2020	2/22/2020	31	-	-	-	-	31
Logic of English	INV8533	1/27/2020	2/26/2020	64	-	-	-	-	64
Logic of English	INV8540	1/27/2020	2/26/2020	298	-	-	-	-	298
Logical Progression LLC	201LP	1/27/2020	2/26/2020	400	-	-	-	-	400
Lora Williams	10	1/17/2020	2/16/2020	160	-	-	-	-	160
Lora Williams	9	1/17/2020	2/16/2020	160	-	-	-	-	160
Lori Kibbe	2030	12/28/2019	12/28/2019	-	-	160	-	-	160
Lori Kibbe	2031	12/28/2019	12/28/2019	-	-	160	-	-	160
Los Rios Rock School	0002	1/16/2020	2/15/2020	875	-	-	-	-	875
Los Rios Rock School	0003	1/27/2020	2/26/2020	875	-	-	-	-	875
Los Rios Rock School	0004	1/27/2020	2/26/2020	875	-	-	-	-	875
Los Rios Rock School	0005	1/27/2020	2/26/2020	875	-	-	-	-	875
Lotus Educational Services	1408	12/23/2019	1/22/2020	-	486	-	-	-	486
Lotus Educational Services	1426	1/20/2020	2/19/2020	203	-	-	-	-	203
Lucid Speech and Language	Dec2019Cabrillo	1/9/2020	2/8/2020	1,000	-	-	-	-	1,000
Lynne-Marie Friedrichs	100	1/22/2020	2/21/2020	165	-	-	-	-	165
Lynne-Marie Friedrichs	101	1/24/2020	2/23/2020	155	-	-	-	-	155
Lynne-Marie Friedrichs	102	1/24/2020	2/23/2020	165	-	-	-	-	165
Lynne-Marie Friedrichs	104	1/24/2020	2/23/2020	155	-	-	-	-	155
M & M Surfing School	MM-0121-CPA	1/21/2020	2/20/2020	580	-	-	-	-	580
M & S Studio MV LLC	26709	1/14/2020	2/13/2020	500	-	-	-	-	500
Mad Dog Math	4114	12/16/2019	1/15/2020	-	16	-	-	-	16

Cabrillo Point Academy

Accounts Payable Aging

January 31, 2020

Vendor Name	Invoice/Credit Number	Invoice Date	Date Due	Current	1 - 30 Days Past Due	31 - 60 Days Past Due	61 - 90 Days Past Due	Over 90 Days Past Due	Total
Mad Dog Math	4118	12/18/2019	1/17/2020	-	57	-	-	-	57
Mad Dog Math	4136	1/14/2020	2/13/2020	30	-	-	-	-	30
Mad Dog Math	4137	1/14/2020	2/13/2020	24	-	-	-	-	24
Mad Dog Math	4138	1/16/2020	2/15/2020	180	-	-	-	-	180
Mad Dog Math	4152	1/28/2020	2/27/2020	169	-	-	-	-	169
Magdalena Ecke Family YMCA	319CBA	1/16/2020	2/15/2020	914	-	-	-	-	914
Magikid Robotics Irvine Lab	2020011702	1/17/2020	2/16/2020	799	-	-	-	-	799
Maisaa Sbini	007	1/29/2020	2/28/2020	2,700	-	-	-	-	2,700
Margaret Morghen	25	1/23/2020	2/22/2020	375	-	-	-	-	375
Margaret Morghen	27	1/23/2020	2/22/2020	300	-	-	-	-	300
Maricela Lemos	3	1/16/2020	2/15/2020	648	-	-	-	-	648
Marina Hayes	17	1/17/2020	2/16/2020	1,260	-	-	-	-	1,260
Marisa McDonald	8	1/13/2020	2/12/2020	549	-	-	-	-	549
Marnie Young	CPA0001	11/30/2019	12/30/2019	-	-	71	-	-	71
Mary Lemasters Tahir	009	1/16/2020	2/15/2020	600	-	-	-	-	600
Math and Science Academy of Souther 5		1/27/2020	2/26/2020	1,554	-	-	-	-	1,554
Math and Science Academy of Souther 6		1/28/2020	2/27/2020	504	-	-	-	-	504
Math-U-See Inc.	0589864-IN	12/12/2019	2/10/2020	169	-	-	-	-	169
Math-U-See Inc.	0590247-IN	12/17/2019	2/15/2020	56	-	-	-	-	56
Math-U-See Inc.	0590404-IN	12/19/2019	2/17/2020	124	-	-	-	-	124
Math-U-See Inc.	0591899-IN	1/8/2020	3/8/2020	116	-	-	-	-	116
Math-U-See Inc.	0591905-IN	1/8/2020	3/8/2020	68	-	-	-	-	68
Math-U-See Inc.	0592038-IN	1/9/2020	3/9/2020	56	-	-	-	-	56
Math-U-See Inc.	0592039-IN	1/9/2020	3/9/2020	56	-	-	-	-	56
Math-U-See Inc.	0592710-IN	1/14/2020	3/14/2020	97	-	-	-	-	97
Math-U-See Inc.	0592769-IN	1/15/2020	3/15/2020	68	-	-	-	-	68
Math-U-See Inc.	0592895-IN	1/15/2020	3/15/2020	56	-	-	-	-	56
Math-U-See Inc.	0592896-IN	1/15/2020	3/15/2020	68	-	-	-	-	68
Math-U-See Inc.	0592902-IN	1/15/2020	3/15/2020	239	-	-	-	-	239
Math-U-See Inc.	0592970-IN	1/16/2020	3/16/2020	56	-	-	-	-	56
Math-U-See Inc.	0593149-IN	1/17/2020	3/17/2020	112	-	-	-	-	112
Math-U-See Inc.	0593150-IN	1/17/2020	3/17/2020	97	-	-	-	-	97
Math-U-See Inc.	0593284-IN	1/17/2020	3/17/2020	166	-	-	-	-	166
Math-U-See Inc.	0593724-IN	1/22/2020	3/22/2020	112	-	-	-	-	112
Math-U-See Inc.	0593726-IN	1/22/2020	3/22/2020	97	-	-	-	-	97
Math-U-See Inc.	0593727-IN	1/22/2020	3/22/2020	97	-	-	-	-	97
Math-U-See Inc.	0593728-IN	1/22/2020	3/22/2020	68	-	-	-	-	68
Math-U-See Inc.	0593729-IN	1/22/2020	3/22/2020	116	-	-	-	-	116
Math-U-See Inc.	0594171-IN	1/24/2020	3/24/2020	193	-	-	-	-	193
Math-U-See Inc.	0594258-IN	1/27/2020	3/27/2020	124	-	-	-	-	124

Cabrillo Point Academy

Accounts Payable Aging

January 31, 2020

Vendor Name	Invoice/Credit Number	Invoice Date	Date Due	Current	1 - 30 Days Past Due	31 - 60 Days Past Due	61 - 90 Days Past Due	Over 90 Days Past Due	Total
Math-U-See Inc.	0594530-IN	1/28/2020	3/28/2020	96	-	-	-	-	96
Math-U-See Inc.	0594576-IN	1/28/2020	3/28/2020	156	-	-	-	-	156
Mathnasium of 4S	100011820	1/18/2020	2/17/2020	1,256	-	-	-	-	1,256
Mathnasium of Point Loma	452846982	1/22/2020	2/21/2020	294	-	-	-	-	294
Mathnasium of Point Loma	619123580	1/22/2020	2/21/2020	294	-	-	-	-	294
Meaghan Padilla	0005	1/24/2020	2/23/2020	1,930	-	-	-	-	1,930
MEL Science Ltd	EP202001282	1/28/2020	2/27/2020	298	-	-	-	-	298
MEL Science Ltd	JC201901143	1/14/2020	2/13/2020	298	-	-	-	-	298
MEL Science Ltd	JH202001246	1/24/2020	2/23/2020	298	-	-	-	-	298
MEL Science Ltd	KC202001177	1/17/2020	2/16/2020	298	-	-	-	-	298
MEL Science Ltd	KE2020011410	1/14/2020	2/13/2020	377	-	-	-	-	377
MEL Science Ltd	MF202001287	1/28/2020	2/27/2020	100	-	-	-	-	100
MEL Science Ltd	MK201901145	1/14/2020	2/13/2020	298	-	-	-	-	298
MEL Science Ltd	MP202001285	1/28/2020	2/27/2020	298	-	-	-	-	298
MEL Science Ltd	MS201912197	12/19/2019	1/18/2020	-	377	-	-	-	377
MEL Science Ltd	OG202001241	1/24/2020	2/23/2020	100	-	-	-	-	100
MEL Science Ltd	TC2020011411	1/14/2020	2/13/2020	298	-	-	-	-	298
Melinda J. Beebe	009	1/11/2020	2/10/2020	620	-	-	-	-	620
Melissa Burke	119	12/10/2019	1/9/2020	-	160	-	-	-	160
Melissa Burke	121	1/21/2020	2/20/2020	200	-	-	-	-	200
Melissa Burke	124	1/21/2020	2/20/2020	45	-	-	-	-	45
Melodee Klimala	1500	1/21/2020	2/20/2020	50	-	-	-	-	50
Melodee Klimala	4459	1/23/2020	2/22/2020	160	-	-	-	-	160
Mercurius Inc.	86691	12/13/2019	2/11/2020	155	-	-	-	-	155
Michele Liem	EH#4	1/2/2020	1/2/2020	-	95	-	-	-	95
Michelle Diniakos	3	1/23/2020	2/22/2020	2,610	-	-	-	-	2,610
Mindy Roth	INV0008	12/20/2019	12/20/2019	-	-	1,125	-	-	1,125
Mission Viejo Nadadores	MVNJAN2020	1/15/2020	2/14/2020	260	-	-	-	-	260
Momentum Dance Center LLC 2	757	1/14/2020	2/13/2020	124	-	-	-	-	124
Momentum Dance Center LLC 2	758	1/14/2020	2/13/2020	20	-	-	-	-	20
Momentum Dance Center LLC 2	759	1/14/2020	2/13/2020	34	-	-	-	-	34
Momentum Dance Center LLC 2	760	1/14/2020	2/13/2020	135	-	-	-	-	135
Momentum Dance Center LLC 2	761	1/14/2020	2/13/2020	202	-	-	-	-	202
Momentum Dance Center LLC 2	762	1/14/2020	2/13/2020	135	-	-	-	-	135
Momentum Dance Center LLC 2	763	1/14/2020	2/13/2020	300	-	-	-	-	300
Momentum Dance Center LLC 2	764	1/14/2020	2/13/2020	124	-	-	-	-	124
Monte Mansfield	CPA 01.21.2020	1/21/2020	2/20/2020	596	-	-	-	-	596
Monteclaro Cultural & Community Me	DL05-001-092019	1/20/2020	2/19/2020	40	-	-	-	-	40
Monteclaro Cultural & Community Me	DL05-001-102019	1/20/2020	2/19/2020	40	-	-	-	-	40
Monteclaro Cultural & Community Me	HL06-001-092019	1/20/2020	2/19/2020	40	-	-	-	-	40

Cabrillo Point Academy

Accounts Payable Aging

January 31, 2020

Vendor Name	Invoice/Credit Number	Invoice Date	Date Due	Current	1 - 30 Days Past Due	31 - 60 Days Past Due	61 - 90 Days Past Due	Over 90 Days Past Due	Total
Monteclaro Cultural & Community Me	HL06-001-102019	1/20/2020	2/19/2020	40	-	-	-	-	40
Morey's Music Store, Inc.	01142020	1/14/2020	2/13/2020	319	-	-	-	-	319
Morey's Music Store, Inc.	01282020	1/28/2020	2/27/2020	43	-	-	-	-	43
Mountain Pottery	000029	1/23/2020	1/23/2020	-	75	-	-	-	75
Moving Beyond the Page	209672	1/15/2020	2/14/2020	9	-	-	-	-	9
Moving Beyond the Page	209675	1/15/2020	2/14/2020	9	-	-	-	-	9
Moving Beyond the Page	209692	1/15/2020	2/14/2020	9	-	-	-	-	9
Moving Beyond the Page	209698	1/15/2020	2/14/2020	9	-	-	-	-	9
Moving Beyond the Page	209699	1/15/2020	2/14/2020	9	-	-	-	-	9
MoxieBox Art, Inc	5469	1/14/2020	2/13/2020	152	-	-	-	-	152
MoxieBox Art, Inc	5482	1/20/2020	2/19/2020	152	-	-	-	-	152
Mud Hen Clay and Art Studio	115	1/14/2020	2/13/2020	325	-	-	-	-	325
Murphy Language Arts, LLC	INV0091	1/24/2020	2/23/2020	7,167	-	-	-	-	7,167
Murrieta Academy of Music	126	11/19/2019	12/19/2019	-	-	178	-	-	178
Murrieta Academy of Music	130	12/10/2019	1/9/2020	-	825	-	-	-	825
Murrieta Academy of Music	136	1/22/2020	2/21/2020	65	-	-	-	-	65
Murrieta Academy of Music	137	1/22/2020	2/21/2020	65	-	-	-	-	65
Music Moves Academy Inc	2020-1	1/9/2020	2/8/2020	1,080	-	-	-	-	1,080
Music Pillars	17304	1/24/2020	1/24/2020	-	695	-	-	-	695
Music Pillars	17305	1/24/2020	1/24/2020	-	645	-	-	-	645
Musical Theatre OC	SMITH107	1/31/2020	3/1/2020	1,480	-	-	-	-	1,480
Mystery Science Inc.	57412	1/13/2020	2/12/2020	69	-	-	-	-	69
Mystery Science Inc.	66037	1/13/2020	2/12/2020	69	-	-	-	-	69
Mystery Science Inc.	67533	1/23/2020	2/22/2020	69	-	-	-	-	69
Nancy Watilo	007	1/15/2020	2/14/2020	1,180	-	-	-	-	1,180
Nannette Lindsey	005	1/16/2020	2/15/2020	520	-	-	-	-	520
Nannette Lindsey	006	1/23/2020	2/22/2020	455	-	-	-	-	455
Nannette Lindsey	007	1/24/2020	2/23/2020	65	-	-	-	-	65
New West Ballet School	53	1/20/2020	2/19/2020	240	-	-	-	-	240
New West Ballet School	55	1/23/2020	2/22/2020	695	-	-	-	-	695
Nichols Speech, Inc.	13771	1/11/2020	2/10/2020	1,508	-	-	-	-	1,508
Nicole Fredericks	2019-498507	1/20/2020	2/19/2020	866	-	-	-	-	866
Nicole Fredericks	2019-498509	1/20/2020	2/19/2020	650	-	-	-	-	650
Nicole Fredericks	2019-498517	1/20/2020	2/19/2020	650	-	-	-	-	650
Noelle Catiller	5-CPA	1/21/2020	2/20/2020	275	-	-	-	-	275
Noelle Catiller	6-CPA	1/22/2020	2/21/2020	256	-	-	-	-	256
Noonan Family Swim School, Inc.	54311_12	1/15/2020	2/14/2020	294	-	-	-	-	294
Noonan Family Swim School, Inc.	54312_12	1/15/2020	2/14/2020	294	-	-	-	-	294
Noonan Family Swim School, Inc.	55831_6	1/23/2020	2/22/2020	250	-	-	-	-	250
Noonan Family Swim School, Inc.	55832_1	1/23/2020	2/22/2020	250	-	-	-	-	250

Cabrillo Point Academy

Accounts Payable Aging

January 31, 2020

Vendor Name	Invoice/Credit Number	Invoice Date	Date Due	Current	1 - 30 Days Past Due	31 - 60 Days Past Due	61 - 90 Days Past Due	Over 90 Days Past Due	Total
Noonan Family Swim School, Inc.	66223_6	1/24/2020	2/23/2020	100	-	-	-	-	100
Noonan Family Swim School, Inc.	66447_4	1/15/2020	2/14/2020	300	-	-	-	-	300
Noonan Family Swim School, Inc.	66792_2	1/15/2020	2/14/2020	300	-	-	-	-	300
Noonan Family Swim School, Inc.	67517_1	1/15/2020	2/14/2020	282	-	-	-	-	282
North County Academy of Dance	2020010003	1/23/2020	2/22/2020	1,689	-	-	-	-	1,689
Nzingha Newton	103	1/25/2020	2/24/2020	450	-	-	-	-	450
OC All Stars Cheer & Dance, Inc	12201	1/22/2020	2/21/2020	60	-	-	-	-	60
OC All Stars Cheer & Dance, Inc	12202	1/22/2020	2/21/2020	60	-	-	-	-	60
OC All Stars Cheer & Dance, Inc	12301	1/23/2020	2/22/2020	50	-	-	-	-	50
OC All Stars Cheer & Dance, Inc	12302	1/23/2020	2/22/2020	25	-	-	-	-	25
OC All Stars Cheer & Dance, Inc	12901	1/29/2020	2/28/2020	225	-	-	-	-	225
OC Equestrian Vaulting	2612	1/7/2020	1/7/2020	-	897	-	-	-	897
OC Monart	13	1/17/2020	2/16/2020	843	-	-	-	-	843
OC Monart	15	1/28/2020	2/27/2020	265	-	-	-	-	265
OC Monart	17	1/28/2020	2/27/2020	1,835	-	-	-	-	1,835
OC Performing Arts, LLC	44752	1/15/2020	2/14/2020	135	-	-	-	-	135
Oceanside Gymnastics	266641-2020	1/17/2020	2/16/2020	313	-	-	-	-	313
Oceanside Gymnastics	266642-2020	1/17/2020	2/16/2020	313	-	-	-	-	313
Office Depot	397570400001	11/4/2019	2/3/2020	2	-	-	-	-	2
Office Depot, Inc	374294871001	9/5/2019	10/5/2019	-	-	-	-	5	5
Office Depot, Inc	375158180001	9/7/2019	10/7/2019	-	-	-	-	1	1
Office Depot, Inc	377068585001	9/11/2019	10/11/2019	-	-	-	-	1	1
Office Depot, Inc	377585638001	9/12/2019	10/12/2019	-	-	-	-	26	26
Office Depot, Inc	381802411001	9/23/2019	10/23/2019	-	-	-	-	3	3
Office Depot, Inc	386050108001	10/7/2019	11/6/2019	-	-	-	5	-	5
Office Depot, Inc	388335660001	10/8/2019	11/7/2019	-	-	-	4	-	4
Office Depot, Inc	398047843001	11/5/2019	12/8/2019	-	-	8	-	-	8
Office Depot, Inc	403356720001	11/18/2019	12/18/2019	-	-	13	-	-	13
Office Depot, Inc	405168814001	11/18/2019	12/18/2019	-	-	11	-	-	11
Office Depot, Inc	405536432001	11/21/2019	12/21/2019	-	-	2	-	-	2
Office Depot, Inc	406170001001	11/20/2019	12/20/2019	-	-	15	-	-	15
Office Depot, Inc	406504537001	11/21/2019	12/21/2019	-	-	4	-	-	4
Office Depot, Inc	426650611001	1/9/2020	2/8/2020	11	-	-	-	-	11
Oku Education Inc	1071	1/24/2020	1/24/2020	-	10,863	-	-	-	10,863
Olympia Training Center	11076	1/13/2020	2/12/2020	3,077	-	-	-	-	3,077
Olympia Training Center	11381	1/13/2020	2/12/2020	779	-	-	-	-	779
On Stage Production Company	554	1/14/2020	2/13/2020	245	-	-	-	-	245
On Stage Production Company	555	1/14/2020	2/13/2020	245	-	-	-	-	245
On Track Wellness	226	1/23/2020	2/22/2020	387	-	-	-	-	387
One-on-One Tutoring	046	1/20/2020	2/19/2020	225	-	-	-	-	225

Cabrillo Point Academy

Accounts Payable Aging

January 31, 2020

Vendor Name	Invoice/Credit Number	Invoice Date	Date Due	Current	1 - 30 Days Past Due	31 - 60 Days Past Due	61 - 90 Days Past Due	Over 90 Days Past Due	Total
One-on-One Tutoring	047	1/20/2020	2/19/2020	225	-	-	-	-	225
One-on-One Tutoring	048	1/20/2020	2/19/2020	150	-	-	-	-	150
One-on-One Tutoring	049	1/22/2020	2/21/2020	400	-	-	-	-	400
One-on-One Tutoring	050	1/22/2020	2/21/2020	400	-	-	-	-	400
One-on-One Tutoring	053	1/28/2020	2/27/2020	550	-	-	-	-	550
One-on-One Tutoring	054	1/28/2020	2/27/2020	440	-	-	-	-	440
Orange County Water Polo Club	18380-C004-CPA	1/14/2020	2/13/2020	522	-	-	-	-	522
Orange County Water Polo Club	28243-C001-CPA	1/14/2020	2/13/2020	535	-	-	-	-	535
Orange County Water Polo Club	28245-C001-CPA	1/14/2020	2/13/2020	585	-	-	-	-	585
Orange County Water Polo Club	74551-C003-CPA	1/14/2020	2/13/2020	120	-	-	-	-	120
Orange County Water Polo Club	75456-C006-CPA	1/14/2020	2/13/2020	100	-	-	-	-	100
Orange County Water Polo Club	75470-C006-CPA	1/14/2020	2/13/2020	80	-	-	-	-	80
Othentik Gym	AP 002	12/8/2019	1/8/2020	-	300	-	-	-	300
Otschool, Inc.	11004	1/13/2020	2/12/2020	48	-	-	-	-	48
Otschool, Inc.	11005	1/13/2020	2/12/2020	72	-	-	-	-	72
Otschool, Inc.	11006	1/13/2020	2/12/2020	120	-	-	-	-	120
Otschool, Inc.	11007	1/13/2020	2/12/2020	70	-	-	-	-	70
Otschool, Inc.	11008	1/13/2020	2/12/2020	50	-	-	-	-	50
Otschool, Inc.	11009	1/13/2020	2/12/2020	15	-	-	-	-	15
Otschool, Inc.	11262	1/20/2020	2/19/2020	36	-	-	-	-	36
Otschool, Inc.	11263	1/20/2020	2/19/2020	72	-	-	-	-	72
Otschool, Inc.	11264	1/20/2020	2/19/2020	10	-	-	-	-	10
Otschool, Inc.	11265	1/20/2020	2/19/2020	190	-	-	-	-	190
Otschool, Inc.	11266	1/20/2020	2/19/2020	68	-	-	-	-	68
Otschool, Inc.	11267	1/20/2020	2/19/2020	180	-	-	-	-	180
Otschool, Inc.	11268	1/20/2020	2/19/2020	250	-	-	-	-	250
Otschool, Inc.	11269	1/20/2020	2/19/2020	190	-	-	-	-	190
Otschool, Inc.	11272	1/20/2020	2/19/2020	48	-	-	-	-	48
Otschool, Inc.	11274	1/20/2020	2/19/2020	750	-	-	-	-	750
Otschool, Inc.	11275	1/20/2020	2/19/2020	125	-	-	-	-	125
Otschool, Inc.	11276	1/20/2020	2/19/2020	90	-	-	-	-	90
Otschool, Inc.	11278	1/20/2020	2/19/2020	60	-	-	-	-	60
Otschool, Inc.	11279	1/20/2020	2/19/2020	144	-	-	-	-	144
Otschool, Inc.	11280	1/20/2020	2/19/2020	45	-	-	-	-	45
Otschool, Inc.	11281	1/20/2020	2/19/2020	89	-	-	-	-	89
Otschool, Inc.	11282	1/20/2020	2/19/2020	14	-	-	-	-	14
Otschool, Inc.	11283	1/20/2020	2/19/2020	50	-	-	-	-	50
Otschool, Inc.	11284	1/20/2020	2/19/2020	80	-	-	-	-	80
Otschool, Inc.	11285	1/20/2020	2/19/2020	375	-	-	-	-	375
Otschool, Inc.	11286	1/20/2020	2/19/2020	90	-	-	-	-	90

Cabrillo Point Academy

Accounts Payable Aging

January 31, 2020

Vendor Name	Invoice/Credit Number	Invoice Date	Date Due	Current	1 - 30 Days Past Due	31 - 60 Days Past Due	61 - 90 Days Past Due	Over 90 Days Past Due	Total
Otschool, Inc.	11287	1/20/2020	2/19/2020	196	-	-	-	-	196
Otschool, Inc.	11288	1/20/2020	2/19/2020	375	-	-	-	-	375
Otschool, Inc.	11289	1/20/2020	2/19/2020	375	-	-	-	-	375
Otschool, Inc.	11440	1/27/2020	2/26/2020	145	-	-	-	-	145
Otschool, Inc.	11441	1/27/2020	2/26/2020	130	-	-	-	-	130
Otschool, Inc.	11442	1/27/2020	2/26/2020	110	-	-	-	-	110
Otschool, Inc.	11443	1/27/2020	2/26/2020	14	-	-	-	-	14
Otschool, Inc.	11444	1/27/2020	2/26/2020	96	-	-	-	-	96
Otschool, Inc.	11445	1/27/2020	2/26/2020	125	-	-	-	-	125
Otschool, Inc.	11446	1/27/2020	2/26/2020	14	-	-	-	-	14
Otschool, Inc.	11447	1/27/2020	2/26/2020	200	-	-	-	-	200
Otschool, Inc.	11448	1/27/2020	2/26/2020	465	-	-	-	-	465
Otschool, Inc.	11449	1/27/2020	2/26/2020	14	-	-	-	-	14
Otschool, Inc.	11450	1/27/2020	2/26/2020	90	-	-	-	-	90
Otschool, Inc.	11451	1/27/2020	2/26/2020	158	-	-	-	-	158
Otschool, Inc.	11452	1/27/2020	2/26/2020	20	-	-	-	-	20
Otschool, Inc.	11453	1/27/2020	2/26/2020	200	-	-	-	-	200
Otschool, Inc.	11454	1/27/2020	2/26/2020	30	-	-	-	-	30
Otschool, Inc.	11455	1/27/2020	2/26/2020	121	-	-	-	-	121
Otschool, Inc.	11456	1/27/2020	2/26/2020	125	-	-	-	-	125
PaintBox Art Studio	28	1/22/2020	2/21/2020	2,550	-	-	-	-	2,550
Painted Earth	1226	1/15/2020	2/14/2020	1,169	-	-	-	-	1,169
Painted Earth	1228	1/15/2020	2/14/2020	87	-	-	-	-	87
Paper Moon Music, Inc.	0476	1/28/2020	2/27/2020	195	-	-	-	-	195
Patrick Hinke	23	1/24/2020	2/23/2020	720	-	-	-	-	720
PCM Cheer & Tumble	104	1/15/2020	2/14/2020	270	-	-	-	-	270
Peace Hill Press, Inc. dba Well Trained	51742	1/15/2020	2/14/2020	91	-	-	-	-	91
Peace Hill Press, Inc. dba Well Trained	51781	1/22/2020	2/21/2020	151	-	-	-	-	151
Peace Hill Press, Inc. dba Well Trained	51791	1/24/2020	2/23/2020	53	-	-	-	-	53
Piano Marvel, LLC	10808	1/15/2020	2/14/2020	48	-	-	-	-	48
Piecemakers	36	12/13/2019	1/12/2020	-	310	-	-	-	310
Play To Your Health	02	1/10/2020	2/9/2020	46	-	-	-	-	46
Play-Well TEKnologies	11-82273-CPA	1/6/2020	2/5/2020	240	-	-	-	-	240
Pony Hayvin Ranch	1920-52	1/5/2020	2/4/2020	1,960	-	-	-	-	1,960
Portal Languages - Mission Viejo	INV-1813	1/17/2020	1/17/2020	-	261	-	-	-	261
Power of Leverage BJJ	117	1/10/2020	2/9/2020	390	-	-	-	-	390
PowerKids Center	Sexton1	1/21/2020	2/20/2020	432	-	-	-	-	432
Procopio, Cory, Hargreaves & Savitch L	701674	1/7/2020	1/7/2020	-	401	-	-	-	401
Prodigy Dance Co.	10	1/24/2020	2/23/2020	282	-	-	-	-	282
Rachel Fitzgerald	01212020	1/21/2020	2/20/2020	1,140	-	-	-	-	1,140

Cabrillo Point Academy

Accounts Payable Aging

January 31, 2020

Vendor Name	Invoice/Credit Number	Invoice Date	Date Due	Current	1 - 30 Days Past Due	31 - 60 Days Past Due	61 - 90 Days Past Due	Over 90 Days Past Due	Total
Rainbow Resource Center	2752739	12/18/2019	3/16/2020	19	-	-	-	-	19
Rainbow Resource Center	2792308	1/7/2020	3/7/2020	122	-	-	-	-	122
Rainbow Resource Center	2792309	1/7/2020	3/7/2020	22	-	-	-	-	22
Rainbow Resource Center	2792310	1/7/2020	3/7/2020	27	-	-	-	-	27
Rainbow Resource Center	2792311	1/8/2020	3/8/2020	120	-	-	-	-	120
Rainbow Resource Center	2792315	1/8/2020	3/8/2020	95	-	-	-	-	95
Rainbow Resource Center	2792326	1/8/2020	3/8/2020	362	-	-	-	-	362
Rainbow Resource Center	2792332	1/8/2020	3/8/2020	147	-	-	-	-	147
Rainbow Resource Center	2792334	1/8/2020	3/8/2020	58	-	-	-	-	58
Rainbow Resource Center	2792336	1/8/2020	3/8/2020	20	-	-	-	-	20
Rainbow Resource Center	2792398	1/8/2020	3/8/2020	728	-	-	-	-	728
Rainbow Resource Center	2792422	1/8/2020	3/8/2020	27	-	-	-	-	27
Rainbow Resource Center	2792430	1/8/2020	3/8/2020	27	-	-	-	-	27
Rainbow Resource Center	2792452	1/8/2020	3/8/2020	27	-	-	-	-	27
Rainbow Resource Center	2792611	1/8/2020	3/8/2020	588	-	-	-	-	588
Rainbow Resource Center	2792628	1/8/2020	3/8/2020	54	-	-	-	-	54
Rainbow Resource Center	2792637	1/8/2020	3/8/2020	95	-	-	-	-	95
Rainbow Resource Center	2819358	12/12/2019	2/10/2020	198	-	-	-	-	198
Rainbow Resource Center	2819513	12/12/2019	2/9/2020	159	-	-	-	-	159
Rainbow Resource Center	2819514	12/12/2019	2/10/2020	40	-	-	-	-	40
Rainbow Resource Center	2819515	12/12/2019	2/10/2020	22	-	-	-	-	22
Rainbow Resource Center	2819842	12/12/2019	2/10/2020	35	-	-	-	-	35
Rainbow Resource Center	2819844	12/12/2019	2/10/2020	29	-	-	-	-	29
Rainbow Resource Center	2819846	12/12/2019	2/10/2020	20	-	-	-	-	20
Rainbow Resource Center	2819848	12/12/2019	2/10/2020	81	-	-	-	-	81
Rainbow Resource Center	2819856	12/12/2019	2/10/2020	675	-	-	-	-	675
Rainbow Resource Center	2819921	12/12/2019	2/10/2020	24	-	-	-	-	24
Rainbow Resource Center	2819923	12/12/2019	3/10/2020	33	-	-	-	-	33
Rainbow Resource Center	2819931	12/12/2019	2/10/2020	175	-	-	-	-	175
Rainbow Resource Center	2820499	12/13/2019	2/11/2020	11	-	-	-	-	11
Rainbow Resource Center	2820506	12/13/2019	2/11/2020	39	-	-	-	-	39
Rainbow Resource Center	2820605	12/13/2019	2/11/2020	176	-	-	-	-	176
Rainbow Resource Center	2820615	12/13/2019	2/11/2020	50	-	-	-	-	50
Rainbow Resource Center	2822070	12/16/2019	2/14/2020	106	-	-	-	-	106
Rainbow Resource Center	2822084	12/16/2019	2/14/2020	23	-	-	-	-	23
Rainbow Resource Center	2822087	12/16/2019	2/14/2020	30	-	-	-	-	30
Rainbow Resource Center	2822093	12/16/2019	2/14/2020	129	-	-	-	-	129
Rainbow Resource Center	2822112	12/16/2019	2/14/2020	359	-	-	-	-	359
Rainbow Resource Center	2822788	12/17/2019	2/15/2020	54	-	-	-	-	54
Rainbow Resource Center	2824305	12/18/2019	2/16/2020	151	-	-	-	-	151

Cabrillo Point Academy

Accounts Payable Aging

January 31, 2020

Vendor Name	Invoice/Credit Number	Invoice Date	Date Due	Current	1 - 30 Days Past Due	31 - 60 Days Past Due	61 - 90 Days Past Due	Over 90 Days Past Due	Total
Rainbow Resource Center	2824306	12/18/2019	2/16/2020	24	-	-	-	-	24
Rainbow Resource Center	2824408	12/18/2019	2/16/2020	151	-	-	-	-	151
Rainbow Resource Center	2825985	12/19/2019	2/17/2020	24	-	-	-	-	24
Rainbow Resource Center	2825986	12/19/2019	2/17/2020	82	-	-	-	-	82
Rainbow Resource Center	2825987	12/19/2019	2/17/2020	93	-	-	-	-	93
Rainbow Resource Center	2826042	12/19/2019	2/17/2020	59	-	-	-	-	59
Rainbow Resource Center	2826043	12/19/2019	2/17/2020	24	-	-	-	-	24
Rainbow Resource Center	2826045	12/19/2019	2/17/2020	123	-	-	-	-	123
Rainbow Resource Center	2826284	12/20/2019	2/18/2020	86	-	-	-	-	86
Rainbow Resource Center	2826286	12/20/2019	2/18/2020	40	-	-	-	-	40
Rainbow Resource Center	2826288	12/20/2019	2/18/2020	623	-	-	-	-	623
Rainbow Resource Center	2826520	12/20/2019	2/18/2020	71	-	-	-	-	71
Rainbow Resource Center	2826521	12/20/2019	2/18/2020	76	-	-	-	-	76
Rainbow Resource Center	2829846	1/3/2020	3/3/2020	17	-	-	-	-	17
Rainbow Resource Center	2830020	1/3/2020	3/10/2020	77	-	-	-	-	77
Rainbow Resource Center	2830030	1/3/2020	3/3/2020	116	-	-	-	-	116
Rainbow Resource Center	2830031	1/3/2020	3/3/2020	62	-	-	-	-	62
Rainbow Resource Center	2830041	1/3/2020	3/3/2020	97	-	-	-	-	97
Rainbow Resource Center	2830104	1/3/2020	3/3/2020	190	-	-	-	-	190
Rainbow Resource Center	2830105	1/3/2020	3/3/2020	184	-	-	-	-	184
Rainbow Resource Center	2831007	1/6/2020	3/6/2020	142	-	-	-	-	142
Rainbow Resource Center	2831557	1/6/2020	3/6/2020	59	-	-	-	-	59
Rainbow Resource Center	2831558	1/6/2020	3/6/2020	26	-	-	-	-	26
Rainbow Resource Center	2832941	1/8/2020	3/8/2020	23	-	-	-	-	23
Rainbow Resource Center	2834427	1/10/2020	3/10/2020	137	-	-	-	-	137
Rainbow Resource Center	2835350	1/13/2020	3/13/2020	46	-	-	-	-	46
Rainbow Resource Center	2835498	1/13/2020	3/13/2020	13	-	-	-	-	13
Rainbow Resource Center	2835512	1/13/2020	3/13/2020	26	-	-	-	-	26
Rainbow Resource Center	2836327	1/14/2020	3/14/2020	60	-	-	-	-	60
Rainbow Resource Center	2837060	1/15/2020	3/15/2020	142	-	-	-	-	142
Rainbow Resource Center	2837062	1/15/2020	3/15/2020	24	-	-	-	-	24
Rainbow Resource Center	2837314	1/15/2020	3/15/2020	32	-	-	-	-	32
Rainbow Resource Center	2837316	1/15/2020	3/15/2020	199	-	-	-	-	199
Rainbow Resource Center	2837320	1/15/2020	3/15/2020	64	-	-	-	-	64
Rainbow Resource Center	2837328	1/15/2020	3/15/2020	225	-	-	-	-	225
Rainbow Resource Center	2837374	1/15/2020	3/15/2020	103	-	-	-	-	103
Rainbow Resource Center	2837638	1/16/2020	3/16/2020	16	-	-	-	-	16
Rainbow Resource Center	2837640	1/16/2020	3/16/2020	37	-	-	-	-	37
Rainbow Resource Center	2837928	1/16/2020	3/16/2020	100	-	-	-	-	100
Rainbow Resource Center	2837930	1/16/2020	3/16/2020	175	-	-	-	-	175

Cabrillo Point Academy

Accounts Payable Aging

January 31, 2020

Vendor Name	Invoice/Credit Number	Invoice Date	Date Due	Current	1 - 30 Days Past Due	31 - 60 Days Past Due	61 - 90 Days Past Due	Over 90 Days Past Due	Total
Rainbow Resource Center	2837934	1/16/2020	3/16/2020	46	-	-	-	-	46
Rainbow Resource Center	2838100	1/16/2020	3/16/2020	35	-	-	-	-	35
Rainbow Resource Center	2838103	1/16/2020	3/16/2020	40	-	-	-	-	40
Rainbow Resource Center	2838187	1/17/2020	3/17/2020	497	-	-	-	-	497
Rainbow Resource Center	2838188	1/17/2020	3/17/2020	343	-	-	-	-	343
Rainbow Resource Center	2838300	1/17/2020	3/17/2020	112	-	-	-	-	112
Rainbow Resource Center	2838437	1/17/2020	3/17/2020	34	-	-	-	-	34
Rainbow Resource Center	2838675	1/17/2020	3/17/2020	29	-	-	-	-	29
Rainbow Resource Center	2838819	1/17/2020	3/17/2020	64	-	-	-	-	64
Rainbow Resource Center	2839356	1/20/2020	3/20/2020	131	-	-	-	-	131
Rainbow Resource Center	2840845	1/22/2020	3/22/2020	121	-	-	-	-	121
Rainbow Resource Center	2840890	1/22/2020	3/22/2020	99	-	-	-	-	99
Rainbow Resource Center	2840920	1/22/2020	3/22/2020	19	-	-	-	-	19
Rainbow Resource Center	2841086	1/22/2020	3/22/2020	157	-	-	-	-	157
Rainbow Resource Center	2841097	1/23/2020	3/23/2020	214	-	-	-	-	214
Rainbow Resource Center	2841593	1/23/2020	3/23/2020	377	-	-	-	-	377
Rainbow Resource Center	2842014	1/24/2020	3/24/2020	430	-	-	-	-	430
Rainbow Resource Center	2842117	1/24/2020	3/24/2020	113	-	-	-	-	113
Rainbow Resource Center	2842118	1/24/2020	3/24/2020	131	-	-	-	-	131
Rainbow Resource Center	2842120	1/24/2020	3/24/2020	119	-	-	-	-	119
Rainbow Resource Center	2842250	1/24/2020	3/24/2020	22	-	-	-	-	22
Rainbow Resource Center	2842251	1/24/2020	3/24/2020	22	-	-	-	-	22
Rainbow Resource Center	2842252	1/24/2020	3/24/2020	64	-	-	-	-	64
Rainbow Resource Center	2842498	1/24/2020	3/24/2020	116	-	-	-	-	116
Rainbow Resource Center	2842500	1/24/2020	3/24/2020	24	-	-	-	-	24
Ramona Brazilian Jiu-Jitsu/MMA	2020-2	1/26/2020	1/26/2020	-	1,788	-	-	-	1,788
Rawhide Ranch	PE44470C001CPA	1/15/2020	2/14/2020	450	-	-	-	-	450
Rawhide Ranch	PE44470C002CPA	1/23/2020	2/22/2020	800	-	-	-	-	800
RB Wrestling	52	1/13/2020	2/12/2020	900	-	-	-	-	900
Recreational Music Center	1222020	1/22/2020	2/21/2020	404	-	-	-	-	404
Recreational Music Center	1242020CPA	1/24/2020	2/23/2020	435	-	-	-	-	435
Recreational Music Center	1272020	1/27/2020	2/26/2020	435	-	-	-	-	435
Rising Stars Development League assoc	BballJan2020	1/26/2020	2/25/2020	165	-	-	-	-	165
Roberta Lenert	CB102	1/13/2020	2/12/2020	475	-	-	-	-	475
Roberta Lenert	CB104	1/20/2020	2/19/2020	255	-	-	-	-	255
Roberta Lenert	CB105	1/23/2020	2/22/2020	440	-	-	-	-	440
Robin Dapper	Greenwood17	1/16/2020	2/15/2020	275	-	-	-	-	275
Robin Dapper	Michalovich10	11/20/2019	12/20/2019	-	-	100	-	-	100
Robin Dapper	MollmanAgleEast	1/10/2020	2/9/2020	1,325	-	-	-	-	1,325
Robyn Rakov O.D.	40	1/3/2020	2/2/2020	120	-	-	-	-	120

Cabrillo Point Academy

Accounts Payable Aging

January 31, 2020

Vendor Name	Invoice/Credit Number	Invoice Date	Date Due	Current	1 - 30 Days Past Due	31 - 60 Days Past Due	61 - 90 Days Past Due	Over 90 Days Past Due	Total
Rockstars of Tomorrow Riverside	2106	1/15/2020	2/14/2020	145	-	-	-	-	145
Roos Music	1039	1/14/2020	2/13/2020	1,170	-	-	-	-	1,170
Roos Music	1041	1/23/2020	2/22/2020	1,800	-	-	-	-	1,800
Roos Music	1042	1/24/2020	2/23/2020	1,800	-	-	-	-	1,800
Rooted in Language	00015	1/7/2020	2/6/2020	100	-	-	-	-	100
Russ Miura's Subfighter	INS012020JB	1/23/2020	2/22/2020	150	-	-	-	-	150
Russ Miura's Subfighter	INS012020RR	1/23/2020	2/22/2020	75	-	-	-	-	75
Russian School of Mathematics	MV-78736-C002-SOU	3/4/2019	4/3/2019	-	-	-	-	736	736
Salem Cade	1029	1/13/2020	2/12/2020	440	-	-	-	-	440
Salem Cade	1030	1/13/2020	2/12/2020	420	-	-	-	-	420
Sally Piano Music	20699	1/15/2020	2/14/2020	507	-	-	-	-	507
Samara Rice	01272020	1/27/2020	2/26/2020	3,069	-	-	-	-	3,069
San Diego Harp Academy	4	1/24/2020	2/23/2020	120	-	-	-	-	120
San Diego Ice Arena	12587	1/20/2020	2/19/2020	204	-	-	-	-	204
San Diego Ice Arena	12588	1/20/2020	2/19/2020	204	-	-	-	-	204
San Diego Ice Arena	12589	1/23/2020	2/22/2020	375	-	-	-	-	375
San Diego Ice Arena	12590	1/24/2020	2/23/2020	450	-	-	-	-	450
San Diego Ice Arena	12591	1/24/2020	2/23/2020	330	-	-	-	-	330
San Diego Liberal Arts Academy	3631	1/27/2020	1/27/2020	-	1,800	-	-	-	1,800
Sandy's Art Studio	1248	1/27/2020	2/26/2020	1,350	-	-	-	-	1,350
SCEGA Gymnastics	2006	1/14/2020	2/13/2020	206	-	-	-	-	206
School of Rock	11320	1/13/2020	2/12/2020	787	-	-	-	-	787
School of Rock Temecula	26099-SOR-Nov	12/9/2019	1/8/2020	-	299	-	-	-	299
School Pathways, LLC	63461	12/31/2019	1/30/2020	-	16,415	-	-	-	16,415
Schumacher Tutoring	151	1/20/2020	2/19/2020	1,320	-	-	-	-	1,320
Sebesta's Rocking K Ranch	1004	1/24/2020	2/23/2020	200	-	-	-	-	200
Sebesta's Rocking K Ranch	1005	1/24/2020	2/23/2020	400	-	-	-	-	400
Second City Los Angeles Inc	1152021	1/15/2020	2/14/2020	550	-	-	-	-	550
Set Apart	130	1/15/2020	2/14/2020	26,700	-	-	-	-	26,700
Shane Cammell	191239	1/14/2020	2/13/2020	70	-	-	-	-	70
Shih-Yin Lee	56139-TC-CPA	1/11/2020	2/10/2020	300	-	-	-	-	300
Shree LLC	20	1/15/2020	2/14/2020	149	-	-	-	-	149
Signing Online, LLC	7279	1/13/2020	2/12/2020	75	-	-	-	-	75
Singapore Math Inc.	351029	1/8/2020	2/7/2020	63	-	-	-	-	63
Singapore Math Inc.	351056	1/9/2020	2/8/2020	183	-	-	-	-	183
Singapore Math Inc.	351057	1/9/2020	2/8/2020	63	-	-	-	-	63
Singapore Math Inc.	351058	1/9/2020	2/8/2020	42	-	-	-	-	42
Singapore Math Inc.	351059	1/9/2020	2/8/2020	42	-	-	-	-	42
Singapore Math Inc.	351112	1/14/2020	2/13/2020	82	-	-	-	-	82
Singapore Math Inc.	351113	1/14/2020	2/13/2020	27	-	-	-	-	27

Cabrillo Point Academy

Accounts Payable Aging

January 31, 2020

Vendor Name	Invoice/Credit Number	Invoice Date	Date Due	Current	1 - 30 Days Past Due	31 - 60 Days Past Due	61 - 90 Days Past Due	Over 90 Days Past Due	Total
Singapore Math Inc.	351114	1/14/2020	2/13/2020	28	-	-	-	-	28
Singapore Math Inc.	351115	1/14/2020	2/13/2020	27	-	-	-	-	27
Singapore Math Inc.	351116	1/14/2020	2/13/2020	60	-	-	-	-	60
Singapore Math Inc.	351117	1/14/2020	2/13/2020	16	-	-	-	-	16
Singapore Math Inc.	351152	1/16/2020	2/15/2020	122	-	-	-	-	122
Singapore Math Inc.	351153	1/16/2020	2/15/2020	54	-	-	-	-	54
Singapore Math Inc.	351154	1/16/2020	2/15/2020	113	-	-	-	-	113
Singapore Math Inc.	351205	1/21/2020	2/20/2020	65	-	-	-	-	65
Singapore Math Inc.	351206	1/21/2020	2/20/2020	40	-	-	-	-	40
Singapore Math Inc.	351207	1/21/2020	2/20/2020	47	-	-	-	-	47
Singapore Math Inc.	351208	1/21/2020	2/20/2020	49	-	-	-	-	49
Sky Zone Anaheim	1009	1/13/2020	2/12/2020	258	-	-	-	-	258
Smart Sprouts LLC	151	1/14/2020	2/13/2020	990	-	-	-	-	990
So Cal TTC	01122020	1/12/2020	2/11/2020	327	-	-	-	-	327
Soaring Minds Education	CPAFT 105	12/20/2019	1/19/2020	-	3,900	-	-	-	3,900
SoCal Homeschool Adventures	877	1/14/2020	2/13/2020	129	-	-	-	-	129
Soundscape Music	3006	1/31/2020	2/15/2020	1,445	-	-	-	-	1,445
Southland Ballet Academy Inc.	3013	1/24/2020	2/23/2020	315	-	-	-	-	315
Spotlight Dance Arts	200139	1/10/2020	2/9/2020	50	-	-	-	-	50
Stagelight Performing Arts	0120VILL	1/15/2020	2/14/2020	405	-	-	-	-	405
Stagelight Performing Arts	1219VILL	1/15/2020	2/14/2020	205	-	-	-	-	205
STEAM Action Lab	1020	1/13/2020	2/12/2020	1,650	-	-	-	-	1,650
Steam Educational Foundation, Inc	010120-1	1/21/2020	2/20/2020	6,985	-	-	-	-	6,985
Steam Educational Foundation, Inc	010120-2	1/21/2020	2/20/2020	935	-	-	-	-	935
Stephane Turner	11	1/17/2020	2/16/2020	1,470	-	-	-	-	1,470
Studio 88	S120119	1/15/2020	2/14/2020	323	-	-	-	-	323
Sundance Hills Equestrian Center	241	1/15/2020	1/22/2020	-	110	-	-	-	110
SunDog Therapy Services, Inc	12	1/13/2020	2/12/2020	405	-	-	-	-	405
Susan Dominguez - Spanish Teacher	18	12/1/2019	12/31/2019	-	-	125	-	-	125
Swim Team of Placentia	MC2289784-201	1/10/2020	2/9/2020	2,200	-	-	-	-	2,200
Sylvan Learning Center	1001216	1/13/2020	2/12/2020	624	-	-	-	-	624
Sylvan Learning Center	1001217	1/13/2020	2/12/2020	624	-	-	-	-	624
Talentz Inc.	JaedRock001	1/24/2020	2/23/2020	156	-	-	-	-	156
Tamberly Slagle	CPA1-27	1/27/2020	2/26/2020	3,600	-	-	-	-	3,600
Teacher Synergy, LLC	109376334	1/23/2020	2/13/2020	55	-	-	-	-	55
Teacher Synergy, LLC	109470506	1/24/2020	2/14/2020	9	-	-	-	-	9
Team Quest Fitness Center-San Jacinto	11329	11/18/2019	12/18/2019	-	-	387	-	-	387
Temecula Strings	1402	1/22/2020	2/21/2020	418	-	-	-	-	418
Temecula Tritons Swim Club	28	1/28/2020	2/27/2020	220	-	-	-	-	220
Temecula Valley In-Line Hockey Associ	ICS-JAN2020A	1/23/2020	2/22/2020	721	-	-	-	-	721

Cabrillo Point Academy

Accounts Payable Aging

January 31, 2020

Vendor Name	Invoice/Credit Number	Invoice Date	Date Due	Current	1 - 30 Days Past Due	31 - 60 Days Past Due	61 - 90 Days Past Due	Over 90 Days Past Due	Total
Temecula Yoga Collective	01-15-20	1/15/2020	2/14/2020	266	-	-	-	-	266
Teresa Adams	2020-1	1/13/2020	2/12/2020	560	-	-	-	-	560
Terry Tsang Optometry	203	1/17/2020	2/16/2020	125	-	-	-	-	125
Terry Tsang Optometry	204	1/24/2020	2/23/2020	125	-	-	-	-	125
Terry Tsang Optometry	518	11/21/2019	12/21/2019	-	-	125	-	-	125
Terry Tsang Optometry	522	1/14/2020	2/13/2020	125	-	-	-	-	125
Terry Tsang Optometry	85	1/13/2020	2/12/2020	125	-	-	-	-	125
Terry Tsang Optometry	9020	12/16/2019	1/15/2020	-	125	-	-	-	125
Terry Tsang Optometry	9021	1/13/2020	2/12/2020	125	-	-	-	-	125
The Dance Centre	5	1/27/2020	2/26/2020	165	-	-	-	-	165
The Daydreamer's Academy	1027	1/28/2020	2/27/2020	500	-	-	-	-	500
The Dragon Institute	2019-464720	1/11/2020	2/10/2020	387	-	-	-	-	387
The Dragon Institute	2020-021165	1/11/2020	2/10/2020	447	-	-	-	-	447
The Etiquette Factory With Mrs. Misa	23	1/24/2020	2/23/2020	240	-	-	-	-	240
The Lampo Group, LLC	8112492	1/17/2020	2/16/2020	132	-	-	-	-	132
The Little Gym of Riverside	11420	1/14/2020	2/13/2020	169	-	-	-	-	169
The Little Gym of Riverside	11720	1/13/2020	2/12/2020	387	-	-	-	-	387
The Music Factory	M120119	1/15/2020	2/14/2020	1,461	-	-	-	-	1,461
The Music School	9302	1/14/2020	2/13/2020	116	-	-	-	-	116
The Music School	9376	1/14/2020	2/13/2020	77	-	-	-	-	77
The Salvation Army KROC Center	NOV'2019 RENTAL	1/13/2020	1/13/2020	-	19	-	-	-	19
The Salvation Army KROC Center	OCT'2019 RENTAL	11/4/2019	11/4/2019	-	-	-	120	-	120
The Stronghold	12120	1/21/2020	2/20/2020	1,380	-	-	-	-	1,380
Tilghman's Academy of Music	04578	1/10/2020	2/9/2020	150	-	-	-	-	150
Timberdoodle.com	310650	12/11/2019	2/9/2020	191	-	-	-	-	191
Timberdoodle.com	310743	12/13/2019	2/11/2020	55	-	-	-	-	55
Timberdoodle.com	310901	12/18/2019	2/16/2020	260	-	-	-	-	260
Timberdoodle.com	311068	12/30/2019	2/28/2020	284	-	-	-	-	284
Timberdoodle.com	311125	1/2/2020	3/2/2020	341	-	-	-	-	341
Timberdoodle.com	311127	1/2/2020	3/2/2020	533	-	-	-	-	533
Timberdoodle.com	311279	1/7/2020	3/7/2020	208	-	-	-	-	208
Time4Learning.com	T4LCPA2019	1/7/2020	3/7/2020	215	-	-	-	-	215
Time4Writing.com	T4W10475	12/12/2019	2/10/2020	119	-	-	-	-	119
Time4Writing.com	T4W10622	12/20/2019	2/18/2020	119	-	-	-	-	119
Time4Writing.com	T4W10694	1/17/2020	3/17/2020	238	-	-	-	-	238
TLP Education	1046	1/22/2020	2/21/2020	290	-	-	-	-	290
TLP Education	1047	1/22/2020	2/21/2020	590	-	-	-	-	590
TLP Education	1048	1/22/2020	2/21/2020	590	-	-	-	-	590
TLP Education	1050	1/28/2020	2/27/2020	158	-	-	-	-	158
Touch-it Productions	1019	1/23/2020	2/22/2020	160	-	-	-	-	160

Cabrillo Point Academy

Accounts Payable Aging

January 31, 2020

Vendor Name	Invoice/Credit Number	Invoice Date	Date Due	Current	1 - 30 Days Past Due	31 - 60 Days Past Due	61 - 90 Days Past Due	Over 90 Days Past Due	Total
Tspoons	112619	11/25/2019	12/25/2019	-	-	190	-	-	190
Tutor Doctor	INS006	1/22/2020	2/21/2020	1,140	-	-	-	-	1,140
Tutorbees	266	1/14/2020	2/13/2020	1,575	-	-	-	-	1,575
Underground Dance Company	10	1/10/2020	2/9/2020	608	-	-	-	-	608
United Studios of Self Defense - Newpr	74024-C001	8/29/2019	9/28/2019	-	-	-	-	194	194
United Studios of Self Defense - Newpr	74024-C002	8/29/2019	9/28/2019	-	-	-	-	194	194
United Studios of Self Defense - Newpr	74037-C001	8/29/2019	9/28/2019	-	-	-	-	194	194
United Studios of Self Defense - Newpr	74037-C002	8/29/2019	9/28/2019	-	-	-	-	194	194
United Studios of Self Defense - Newpr	74037-C003	8/29/2019	9/28/2019	-	-	-	-	194	194
United Studios of Self Defense - Newpr	74037-C005	8/29/2019	9/28/2019	-	-	-	-	387	387
University of Jiu Jitsu	45457-C005-CPA	12/11/2019	1/10/2020	-	130	-	-	-	130
University of Redlands	5	1/10/2020	2/9/2020	500	-	-	-	-	500
University of Redlands	6	1/10/2020	2/9/2020	169	-	-	-	-	169
USBA LLC	USBA25	1/22/2020	2/21/2020	1,670	-	-	-	-	1,670
Veronica Anne Richards	252	1/9/2020	2/8/2020	90	-	-	-	-	90
Victoria Kranser	0000054	1/11/2020	2/10/2020	54	-	-	-	-	54
Victoria Kranser	0000055	1/11/2020	2/10/2020	54	-	-	-	-	54
Victoria Kranser	0000056	1/11/2020	2/10/2020	54	-	-	-	-	54
Victoria Kranser	0000059	1/11/2020	2/10/2020	234	-	-	-	-	234
Victoria Kranser	0000060	1/11/2020	2/10/2020	270	-	-	-	-	270
Victoria Kranser	0000061	1/11/2020	2/10/2020	240	-	-	-	-	240
Victoria Kranser	0000065	1/16/2020	2/15/2020	48	-	-	-	-	48
Victoria Kranser	0000066	1/16/2020	2/15/2020	54	-	-	-	-	54
Victoria Kranser	0000067	1/16/2020	2/15/2020	54	-	-	-	-	54
Victoria Kranser	0000068	1/16/2020	2/15/2020	270	-	-	-	-	270
Victoria Kranser	0000070	1/16/2020	2/15/2020	285	-	-	-	-	285
Victoria Kranser	0000071	1/16/2020	2/15/2020	285	-	-	-	-	285
Victoria Kranser	0000072	1/16/2020	2/15/2020	285	-	-	-	-	285
Victoria Kranser	0000073	1/16/2020	2/15/2020	270	-	-	-	-	270
Victoria Kranser	0000074	1/16/2020	2/15/2020	240	-	-	-	-	240
Victoria Kranser	0000075	1/16/2020	2/15/2020	140	-	-	-	-	140
Victoria Kranser	0000076	1/16/2020	2/15/2020	144	-	-	-	-	144
Victoria Kranser	0000078	1/17/2020	2/16/2020	250	-	-	-	-	250
Victoria Kranser	0000080	1/17/2020	2/16/2020	285	-	-	-	-	285
Victoria Kranser	0000081	1/17/2020	2/16/2020	285	-	-	-	-	285
Victoria Kranser	0000082	1/17/2020	2/16/2020	285	-	-	-	-	285
Victoria Kranser	0000083	1/17/2020	2/16/2020	275	-	-	-	-	275
Victoria Kranser	0000084	1/17/2020	2/16/2020	250	-	-	-	-	250
Victoria Kranser	0000085	1/17/2020	2/16/2020	240	-	-	-	-	240
Victoria Kranser	0000086	1/17/2020	2/16/2020	240	-	-	-	-	240

Cabrillo Point Academy

Accounts Payable Aging

January 31, 2020

Vendor Name	Invoice/Credit Number	Invoice Date	Date Due	Current	1 - 30 Days Past Due	31 - 60 Days Past Due	61 - 90 Days Past Due	Over 90 Days Past Due	Total
Victoria Kranser	0000087	1/17/2020	2/16/2020	162	-	-	-	-	162
Victoria Kranser	0000088	1/17/2020	2/16/2020	47	-	-	-	-	47
Victoria Kranser	0000090	1/17/2020	2/16/2020	47	-	-	-	-	47
Victoria Kranser	0000091	1/17/2020	2/16/2020	47	-	-	-	-	47
Victoria Kranser	0000092	1/17/2020	2/16/2020	47	-	-	-	-	47
Victoria Kranser	0000093	1/17/2020	2/16/2020	54	-	-	-	-	54
Victoria Kranser	0000094	1/17/2020	2/16/2020	54	-	-	-	-	54
Victoria Kranser	0000095	1/17/2020	2/16/2020	54	-	-	-	-	54
Victoria Kranser	0000096	1/17/2020	2/16/2020	54	-	-	-	-	54
Victoria Kranser	0000097	1/17/2020	2/16/2020	54	-	-	-	-	54
Victoria Kranser	0000098	1/17/2020	2/16/2020	48	-	-	-	-	48
Victoria Kranser	0000099	1/17/2020	2/16/2020	48	-	-	-	-	48
Victoria Kranser	0000100	1/17/2020	2/16/2020	48	-	-	-	-	48
Victoria Kranser	0000101	1/17/2020	2/16/2020	48	-	-	-	-	48
Victoria Kranser	0000102	1/17/2020	2/16/2020	48	-	-	-	-	48
Victoria Kranser	0000103	1/17/2020	2/16/2020	54	-	-	-	-	54
Victoria Kranser	0000104	1/17/2020	2/16/2020	54	-	-	-	-	54
Victoria Kranser	0000105	1/17/2020	2/16/2020	54	-	-	-	-	54
Victoria Kranser	0000106	1/17/2020	2/16/2020	54	-	-	-	-	54
Victoria Kranser	0000107	1/17/2020	2/16/2020	54	-	-	-	-	54
Victoria Kranser	0000108	1/17/2020	2/16/2020	54	-	-	-	-	54
Victoria Kranser	0000109	1/17/2020	2/16/2020	54	-	-	-	-	54
Victoria Kranser	0000110	1/17/2020	2/16/2020	54	-	-	-	-	54
Victoria Kranser	0000111	1/17/2020	2/16/2020	54	-	-	-	-	54
Victoria Kranser	0000112	1/17/2020	2/16/2020	54	-	-	-	-	54
Victoria Kranser	0000113	1/17/2020	2/16/2020	54	-	-	-	-	54
Victoria Kranser	0000114	1/17/2020	2/16/2020	54	-	-	-	-	54
Victoria Kranser	0000115	1/17/2020	2/16/2020	54	-	-	-	-	54
Victoria Kranser	0000116	1/17/2020	2/16/2020	54	-	-	-	-	54
Victoria Kranser	0000117	1/17/2020	2/16/2020	54	-	-	-	-	54
Victoria Kranser	0000118	1/17/2020	2/16/2020	271	-	-	-	-	271
Victoria Kranser	0000119	1/17/2020	2/16/2020	270	-	-	-	-	270
Victoria Kranser	0000120	1/17/2020	2/16/2020	200	-	-	-	-	200
Victoria Kranser	0000121	1/17/2020	2/16/2020	270	-	-	-	-	270
Victoria Kranser	0000122	1/17/2020	2/16/2020	240	-	-	-	-	240
Victoria Kranser	0000123	1/17/2020	2/16/2020	54	-	-	-	-	54
Victoria Kranser	0000124	1/17/2020	2/16/2020	54	-	-	-	-	54
Victoria Kranser	0000125	1/17/2020	2/16/2020	54	-	-	-	-	54
Victoria Kranser	0000126	1/17/2020	2/16/2020	54	-	-	-	-	54
Victoria Kranser	0000127	1/17/2020	2/16/2020	54	-	-	-	-	54

Cabrillo Point Academy

Accounts Payable Aging

January 31, 2020

Vendor Name	Invoice/Credit Number	Invoice Date	Date Due	Current	1 - 30 Days Past Due	31 - 60 Days Past Due	61 - 90 Days Past Due	Over 90 Days Past Due	Total
Victoria Kranser	0000128	1/17/2020	2/16/2020	271	-	-	-	-	271
Victoria Kranser	0000129	1/17/2020	2/16/2020	162	-	-	-	-	162
Victoria Kranser	0000130	1/17/2020	2/16/2020	163	-	-	-	-	163
Victoria Kranser	0000131	1/17/2020	2/16/2020	234	-	-	-	-	234
Victoria Kranser	0000132	1/17/2020	2/16/2020	275	-	-	-	-	275
Victoria Kranser	0000133	1/17/2020	2/16/2020	270	-	-	-	-	270
Victoria Kranser	0000134	1/18/2020	2/17/2020	47	-	-	-	-	47
Victoria Kranser	0000135	1/18/2020	2/17/2020	47	-	-	-	-	47
Victoria Kranser	0000136	1/18/2020	2/17/2020	47	-	-	-	-	47
Victoria Kranser	0000137	1/18/2020	2/17/2020	47	-	-	-	-	47
Victoria Kranser	0000138	1/18/2020	2/17/2020	47	-	-	-	-	47
Victoria Kranser	0000139	1/18/2020	2/17/2020	48	-	-	-	-	48
Victoria Kranser	0000140	1/18/2020	2/17/2020	48	-	-	-	-	48
Victoria Kranser	0000141	1/18/2020	2/17/2020	48	-	-	-	-	48
Victoria Kranser	0000142	1/18/2020	2/17/2020	48	-	-	-	-	48
Victoria Kranser	0000143	1/18/2020	2/17/2020	48	-	-	-	-	48
Victoria Kranser	0000144	1/18/2020	2/17/2020	165	-	-	-	-	165
Victoria Kranser	0000145	1/18/2020	2/17/2020	240	-	-	-	-	240
Victoria Kranser	0000147	1/18/2020	2/17/2020	200	-	-	-	-	200
Victoria Kranser	0000148	1/18/2020	2/17/2020	192	-	-	-	-	192
Victoria Kranser	0000149	1/18/2020	2/17/2020	48	-	-	-	-	48
Victoria Kranser	0000150	1/18/2020	2/17/2020	48	-	-	-	-	48
Victoria Kranser	0000151	1/18/2020	2/17/2020	100	-	-	-	-	100
Victoria Kranser	0000152	1/18/2020	2/17/2020	162	-	-	-	-	162
Victoria Kranser	0000153	1/18/2020	2/17/2020	55	-	-	-	-	55
Victoria Kranser	0000154	1/18/2020	2/17/2020	48	-	-	-	-	48
Victoria Kranser	0000156	1/18/2020	2/17/2020	270	-	-	-	-	270
Victoria Kranser	0000157	1/18/2020	2/17/2020	240	-	-	-	-	240
Victoria Kranser	0000158	1/18/2020	2/17/2020	240	-	-	-	-	240
Victoria Kranser	0000159	1/18/2020	2/17/2020	270	-	-	-	-	270
Victoria Kranser	0000161	1/18/2020	2/17/2020	108	-	-	-	-	108
Victoria Kranser	0000162	1/18/2020	2/17/2020	108	-	-	-	-	108
Victoria Kranser	0000163	1/18/2020	2/17/2020	94	-	-	-	-	94
Victoria Kranser	0000164	1/18/2020	2/17/2020	170	-	-	-	-	170
Victoria Kranser	0000165	1/18/2020	2/17/2020	240	-	-	-	-	240
Victoria Kranser	0000166	1/18/2020	2/17/2020	54	-	-	-	-	54
Victoria's Simply Dancing	E-FELTON-2	1/23/2020	2/22/2020	160	-	-	-	-	160
Victoria's Simply Dancing	E-FELTON-3	1/23/2020	2/22/2020	160	-	-	-	-	160
Virtuoso Music	16067	1/13/2020	2/12/2020	878	-	-	-	-	878
Virtuoso Music	16068	1/23/2020	2/22/2020	2,068	-	-	-	-	2,068

Cabrillo Point Academy

Accounts Payable Aging

January 31, 2020

Vendor Name	Invoice/Credit Number	Invoice Date	Date Due	Current	1 - 30 Days Past Due	31 - 60 Days Past Due	61 - 90 Days Past Due	Over 90 Days Past Due	Total
Vista Baseball Academy	199	12/18/2019	1/17/2020	-	630	-	-	-	630
VocabularySpellingCity	1485709	1/22/2020	2/21/2020	35	-	-	-	-	35
VSP-SD Capital Partners I, LLC	2020-01	1/17/2020	2/16/2020	1,350	-	-	-	-	1,350
Wagner's School of Music, LLC	5073	1/31/2020	1/31/2020	82	-	-	-	-	82
Walter H Jimenez	01-EDBL	1/22/2020	2/21/2020	375	-	-	-	-	375
Walter H Jimenez	02-JC	1/22/2020	2/21/2020	375	-	-	-	-	375
Walter H Jimenez	02-MC	1/22/2020	2/21/2020	375	-	-	-	-	375
Watersafe Swim School	277	1/14/2020	2/13/2020	375	-	-	-	-	375
Watersafe Swim School	278	1/14/2020	2/13/2020	714	-	-	-	-	714
Watersafe Swim School	279	1/14/2020	2/13/2020	824	-	-	-	-	824
Watersafe Swim School	280	1/14/2020	2/13/2020	238	-	-	-	-	238
Watersafe Swim School	281	1/14/2020	2/13/2020	582	-	-	-	-	582
Watersafe Swim School	282	1/14/2020	2/13/2020	714	-	-	-	-	714
Watersafe Swim School	283	1/14/2020	2/13/2020	357	-	-	-	-	357
Watersafe Swim School	284	1/14/2020	2/13/2020	228	-	-	-	-	228
White Dragon Martial Arts	007	10/5/2019	11/4/2019	-	-	-	395	-	395
Wieser Educational	91743	1/22/2020	2/21/2020	31	-	-	-	-	31
Wisdom Keepers, LLC	CPA01122020	1/12/2020	2/11/2020	1,200	-	-	-	-	1,200
Within Reach Learning Center	5	12/8/2019	1/7/2020	-	245	-	-	-	245
WM Music Lessons	008CBA	1/20/2020	2/19/2020	1,410	-	-	-	-	1,410
Wonder Crate	1058	1/15/2020	2/14/2020	30	-	-	-	-	30
Wood & Ivory	0102	1/9/2020	2/9/2020	590	-	-	-	-	590
Wood & Ivory	0106	1/16/2020	2/15/2020	280	-	-	-	-	280
Write On! Webb	1312	1/13/2020	2/12/2020	60	-	-	-	-	60
WriteAtHome, Inc.	2015495	1/22/2020	2/21/2020	289	-	-	-	-	289
YMCA of Greater Whittier	94	1/15/2020	2/14/2020	119	-	-	-	-	119
YMCA of Laguna Niguel	2020-003684	1/15/2020	2/14/2020	276	-	-	-	-	276
YMCA of Laguna Niguel	2020-020501	1/24/2020	2/23/2020	53	-	-	-	-	53
YMCA of Laguna Niguel	2020-020505	1/13/2020	2/12/2020	53	-	-	-	-	53
YMCA of Laguna Niguel	2020-020514	1/13/2020	2/12/2020	53	-	-	-	-	53
YMCA of Laguna Niguel	2020-026015	1/23/2020	2/22/2020	195	-	-	-	-	195
YMCA of Orange County	Y911-Swny	1/20/2020	2/19/2020	276	-	-	-	-	276
YMCA of San Diego County	202003	1/10/2020	2/9/2020	494	-	-	-	-	494
YMCA of San Diego County	202005	1/10/2020	2/9/2020	120	-	-	-	-	120
YMCA of San Diego County	202008	1/15/2020	2/14/2020	63	-	-	-	-	63
YMCA of San Diego County	202011	1/23/2020	2/22/2020	141	-	-	-	-	141
Yorba Linda Spotlight	2	1/21/2020	2/20/2020	2,235	-	-	-	-	2,235
Young Actors Space	89	1/23/2020	2/22/2020	800	-	-	-	-	800

Cabrillo Point Academy

Accounts Payable Aging

January 31, 2020

Vendor Name	Invoice/Credit Number	Invoice Date	Date Due	Current	1 - 30 Days Past Due	31 - 60 Days Past Due	61 - 90 Days Past Due	Over 90 Days Past Due	Total	
				Total Outstanding	<u>\$ 381,729</u>	<u>\$ 62,155</u>	<u>\$ 5,984</u>	<u>\$ 2,690</u>	<u>\$ (11,765)</u>	<u>\$ 440,794</u>
				Payables in January						



2020 – 2021 Enrollment Items

- Enrollment Growth Projections - (500 Spots)
- Open Enrollment Window - (April 1, 2020 – April 30, 2020)



2020-2021 School Calendar

August 2020						
Su	M	Tu	W	Th	F	Sa
						1
2	3	4	5	6	7	8
9	10	11	12	13	14	15
16	17	18	19	20	21	22
23	24	25	26	27	28	29
30	31					

September 2020						
Su	M	Tu	W	Th	F	Sa
		1	2	3	4	5
6	7	8	9	10	11	12
13	14	15	16	17	18	19
20	21	22	23	24	25	26
27	28	29	30			

October 2020						
Su	M	Tu	W	Th	F	Sa
				1	2	3
4	5	6	7	8	9	10
11	12	13	14	15	16	17
18	19	20	21	22	23	24
25	26	27	28	29	30	31

Date	Event or Holiday
Aug 17	First Day of School
Sep 07	Labor Day
Nov 11	Veterans Day
Nov 23-27	Thanksgiving Break
Dec 21-Jan 1	Winter Break
Jan 08	Last Day of First Semester

November 2020						
Su	M	Tu	W	Th	F	Sa
1	2	3	4	5	6	7
8	9	10	11	12	13	14
15	16	17	18	19	20	21
22	23	24	25	26	27	28
29	30					

December 2020						
Su	M	Tu	W	Th	F	Sa
		1	2	3	4	5
6	7	8	9	10	11	12
13	14	15	16	17	18	19
20	21	22	23	24	25	26
27	28	29	30	31		

January 2021						
Su	M	Tu	W	Th	F	Sa
					1	2
3	4	5	6	7	8	9
10	11	12	13	14	15	16
17	18	19	20	21	22	23
24	25	26	27	28	29	30
31						

Jan 11	Beginning of Second Semester
Jan 18	Martin Luther King Jr. Day
Feb 15	Washington's Birthday
Feb 16	Lincoln's Birthday
Feb 17-19	School Recess
Apr 02	School Recess
Apr 16-23	Spring Break
May 28	Last Day of School

February 2021						
Su	M	Tu	W	Th	F	Sa
	1	2	3	4	5	6
7	8	9	10	11	12	13
14	15	16	17	18	19	20
21	22	23	24	25	26	27
28						

March 2021						
Su	M	Tu	W	Th	F	Sa
	1	2	3	4	5	6
7	8	9	10	11	12	13
14	15	16	17	18	19	20
21	22	23	24	25	26	27
28	29	30	31			

April 2021						
Su	M	Tu	W	Th	F	Sa
				1	2	3
4	5	6	7	8	9	10
11	12	13	14	15	16	17
18	19	20	21	22	23	24
25	26	27	28	29	30	

May 2021						
Su	M	Tu	W	Th	F	Sa
						1
2	3	4	5	6	7	8
9	10	11	12	13	14	15
16	17	18	19	20	21	22
23	24	25	26	27	28	29
30	31					

June 2021						
Su	M	Tu	W	Th	F	Sa
		1	2	3	4	5
6	7	8	9	10	11	12
13	14	15	16	17	18	19
20	21	22	23	24	25	26
27	28	29	30			

July 2021						
Su	M	Tu	W	Th	F	Sa
				1	2	3
4	5	6	7	8	9	10
11	12	13	14	15	16	17
18	19	20	21	22	23	24
25	26	27	28	29	30	31

Inspire Charter Schools
July 1 2020 - June 2021 HST Teacher Table

C-Basis - 10 Month Calendar*

PAY SCALE GROUP	PAY SCALE LEVEL										
	Points*	1	2	3	4	5	6	7	8	9	10
A (Minimum)	\$58,240**	\$58,240**	\$58,240	\$58,240	\$58,240	\$58,240	\$58,240	\$58,240	\$58,240	\$58,240	\$58,240
B (+ 14 points)	\$58,240**	\$58,240**	\$58,240	\$58,240	\$58,240	\$58,240	\$58,240	\$58,240	\$58,240	\$58,240	\$60,500
C (+ 28 points)	\$58,240	\$58,240	\$58,240	\$58,240	\$58,240	\$58,240	\$58,240	\$58,240	\$58,240	\$59,860	\$63,000
D (+ 42 points)	\$58,240	\$58,240	\$58,240	\$58,240	\$58,240	\$58,240	\$58,240	\$58,240	\$59,100	\$62,400	\$65,500
E (+ 56 points)	\$58,240	\$58,240	\$58,240	\$58,240	\$58,240	\$58,240	\$58,240	\$58,300	\$62,400	\$64,600	\$68,000
F (+ 70 points)	\$58,240	\$58,240	\$58,240	\$58,240	\$58,240	\$58,240	\$58,240	\$60,450	\$63,650	\$66,975	\$70,500
G (+ 84 points)	\$58,240	\$58,240	\$58,240	\$58,240	\$58,240	\$58,240	\$59,475	\$62,600	\$65,875	\$69,350	\$73,000
H (+ 98 points)	\$58,240	\$58,240	\$58,240	\$58,240	\$58,400	\$58,400	\$62,400	\$64,750	\$68,150	\$71,750	\$75,500

Additional Pay Scale Levels

	11	12	13	14
(continued)				
H (+ 98 points)	\$78,000	\$80,500	\$83,000	\$85,500

H15	H20	H25	H30
\$88,000	\$90,500	\$93,000	\$95,000

NBC or Doctorate Differential is \$3000 paid in two installments in December and March.

*Annualized salary includes 196 work days. The 196 work days is a minimum number of work days, and team members may need to work additional days beyond the work calendar.

** Staff holding an alternative certification (intern or emergency) are restricted to A1, A2, B1, and/or B2.

***Annual salary advancements for longevity are not guaranteed and are subject to the school's operational needs and/or budget approved by the school Board.

Inspire Charter Schools
January 1, 2021- December 31, 2021 Preparation Salary
Teacher Table

B-Basis - 10 Month Calendar*

PAY SCALE GROUP Points*	PAY SCALE LEVEL									
	1	2	3	4	5	6	7	8	9	10
A (Minimum)	\$58,240*	\$58,240**	\$58,250	\$58,250	\$58,250	\$58,250	\$58,250	\$58,250	\$58,250	\$58,250
B (+ 14 points)	\$58,240**	\$58,240**	\$58,250	\$58,250	\$58,250	\$58,250	\$58,250	\$58,250	\$58,250	\$63,750
C (+ 28 points)	\$58,250	\$58,250	\$58,250	\$58,250	\$58,250	\$58,250	\$58,250	\$58,250	\$63,110	\$66,250
D (+ 42 points)	\$58,250	\$58,250	\$58,250	\$58,250	\$58,250	\$58,250	\$58,250	\$62,350	\$65,500	\$68,750
E (+ 56 points)	\$58,250	\$58,250	\$58,250	\$58,250	\$58,250	\$58,250	\$61,550	\$65,625	\$67,850	\$71,250
F (+ 70 points)	\$58,250	\$58,250	\$58,250	\$58,250	\$58,250	\$60,650	\$63,700	\$66,900	\$70,225	\$73,750
G (+ 84 points)	\$58,250	\$58,250	\$58,250	\$58,250	\$59,750	\$62,725	\$65,850	\$69,125	\$72,600	\$76,250
H (+ 98 points)	\$58,250	\$58,250	\$58,250	\$58,750	\$61,650	\$64,750	\$68,000	\$71,400	\$75,000	\$78,750

Additional Pay Scale Levels

	11	12	13	14
(continued) H (+ 98 points)	\$81,250	\$83,750	\$86,250	\$88,750

H15	H20	H25	H30
\$91,250	\$93,750	\$96,250	\$98,250

NBC or Doctorate Differential is \$3000 paid in two installments in December and March.

*Annualized salary includes 196 work days. The 196 work days is a minimum number of work days, and team members may need to work additional days beyond the work calendar.

** Staff holding an alternative certification (intern or emergency) are restricted to A1, A2, B1, and/or B2.

***Annual salary advancements for longevity are not guaranteed and are subject to the school's operational needs and/or budget approved by the school Board.

Inspire Charter Schools

January 1, 2021 - December 31, 2021 Preparation Salary Teacher Table

Special Education Teacher / Nurse / *Speech and Language Pathologist 10 Month Calendar**

PAY SCALE GROUP Points*	PAY SCALE LEVEL									
	1	2	3	4	5	6	7	8	9	10
A (Minimum)	\$58,240	\$58,240	\$59,950	\$59,950	\$59,950	\$59,950	\$59,950	\$59,950	\$59,950	\$59,950
B (+ 14 points)	\$558,240	\$58,860	\$59,950	\$59,950	\$59,950	\$59,950	\$59,950	\$59,950	\$59,950	\$65,945
C (+ 28 points)	\$59,950	\$59,950	\$59,950	\$59,950	\$59,950	\$59,950	\$59,950	\$59,950	\$65,247	\$68,670
D (+ 42 points)	\$59,950	\$59,950	\$59,950	\$59,950	\$59,950	\$59,950	\$59,950	\$64,419	\$67,853	\$71,395
E (+ 56 points)	\$59,950	\$59,950	\$59,950	\$59,950	\$59,950	\$59,950	\$63,547	\$67,989	\$70,414	\$74,120
F (+ 70 points)	\$59,950	\$59,950	\$59,950	\$59,950	\$59,950	\$62,566	\$65,891	\$69,379	\$73,003	\$76,845
G (+ 84 points)	\$59,950	\$59,950	\$59,950	\$59,950	\$61,585	\$64,828	\$68,234	\$71,804	\$75,592	\$79,570
H (+ 98 points)	\$59,950	\$59,950	\$59,950	\$60,495	\$63,656	\$67,035	\$70,578	\$74,284	\$78,208	\$82,295

Additional Pay Scale Levels

	11	12	13	14
(continued) H (+ 98 points)	\$85,020	\$87,745	\$90,470	\$93,195

H15	H20	H25	H30
\$95,920	\$98,645	\$101,370	\$103,550

NBC or Doctorate Differential is \$3000 paid in two installments in December and March.

*Annualized salary includes 196 work days. The 196 work days is a minimum number of work days, and team members may need to work additional days beyond the work calendar.

** Staff holding an alternative certification (intern or emergency) are restricted to A1, A2, B1, and/or B2.

***Annual salary advancements for longevity are not guaranteed and are subject to the school's operational needs and/or budget approved by the school Board.

**FIXED TERM EMPLOYMENT AGREEMENT
BETWEEN
INSPIRE CHARTER SCHOOL – CABRILLO POINT ACADEMY & , HOMESCHOOL TEACHER**

THIS EMPLOYMENT AGREEMENT (“Agreement”) is entered into by and between the above named employee (“Employee”) and the Governing Board (“Board”) of Cabrillo Point Academy (“Cabrillo Point Academy”). The Board desires to hire employees who will assist Cabrillo Point Academy in achieving the goals and meeting the requirements of the school. The parties recognize that Cabrillo Point Academy is not governed by the provisions of the California Education Code, except as expressly set forth in the Charter Schools Act of 1992. The Board desires to engage the services of the Employee for purposes of assisting Cabrillo Point Academy in implementing its purposes, policies, and procedures.

WHEREAS, Cabrillo Point Academy and Employee wish to enter into an employment relationship under the conditions set forth herein, the parties hereby agree as follows:

A. STATUTORY PROVISIONS RELATING TO CHARTER SCHOOL EMPLOYMENT

1. Cabrillo Point Academy has been established and operate pursuant to the Charter Schools Act of 1992, Education Code section 47600, *et seq.* Cabrillo Point Academy has been duly approved by the District, according to the laws of the State of California.
2. Pursuant to Education Code section 47604, Cabrillo Point Academy has elected to be formed and to operate as a non-profit public benefit corporation pursuant to the Non-profit Public Benefit Corporation Law of California (Part 2, commencing with section 5110 *et seq.* of the Corporations Code). As such, Cabrillo Point Academy is considered a separate legal entity from the District, which granted the charters. The District shall not be liable for any debts and obligations of Cabrillo Point Academy, and the employee signing below expressly recognizes that he/she is being employed by Cabrillo Point Academy and not the District.
3. Pursuant to Education Code section 47610, Cabrillo Point Academy must comply with all of the provisions set forth in its charter, but is otherwise exempt from the laws governing school districts except as specified in Education Code section 47610.
4. Cabrillo Point Academy shall be deemed the exclusive public school employer of the employees at Cabrillo Point Academy for purposes of Government Code section 3540.1.

B. EMPLOYMENT TERMS AND CONDITIONS

1. **Duties**

Employee will perform such duties as Cabrillo Point Academy may reasonably assign and Employee will abide by all school policies and procedures as adopted and amended from time to time.

2. **Term and Work Schedule**

Subject to Section C, “Termination of Agreement” herein, Cabrillo Point Academy hereby employs Employee for the term of the school, commencing on or after **July 1, 2020** and ending **June 30, 2021**. Workdays for the Employee shall be consistent with the applicable calendar of workdays for this position.

Cabrillo Point Academy shall have the right to assign or reassign the Employee to positions, duties, or additional duties and to make changes in responsibilities, work, or transfers, at any time during the contract term. All other teachers will provide educational services either online or in-person. Specific programs will have specific needs and the Employee is expected to work in accordance with those specific needs. Any question should be directed to the immediate supervisor.

Employee will not render services in person or by electronic means, paid or otherwise, for any other person or entity during contracted work hours with Cabrillo Point Academy.

Teachers are expected to work 196 days a year with 5 of those days or 40 hours occurring in July and the remaining 191 occurring between August and June.

3. **Compensation**

Employee will receive a salary schedule indicating yearly salary no later than June 15th of each school year to be paid semi-monthly (twice a month) from which the Board shall withhold all statutory and other authorized deductions. (Additional column increases earned during the year will be documented on a supplementary salary schedule approved by the Board of Directors of Cabrillo Point Academy at which the employee is affiliated for any given school year.) Additional compensation of \$100/month per student is given when the employee’s roster is more than 28 up to 35 students. Employees who wish to carry more students than 35 may be given permission by the Principal at the same above rate. Carrying a case load of less than 28 students over a course of three (3) months may result in a return to part time status. The board may adjust compensation by up to 15% in the form of a salary increase or reduction based on actual enrollment; any salary increase is contingent on enrollment and positive performance. The salary schedule is based on what the board will deem to be reasonable targets. Salary changes will only be permitted at the end of the 1st three fiscal quarters – namely September 30th, December 31st, and March 30th.

4. **Employee Benefits**

Employee shall be entitled to participate in designated employee benefit programs and plans established by Cabrillo Point Academy (subject to program and eligibility requirements) for the benefit of its employees, which from time to time may be amended and modified by Cabrillo Point Academy in its sole discretion.

5. **Performance Evaluation**

Employee shall receive periodic performance reviews conducted by his/her supervisor in accordance with Cabrillo Point Academy's evaluation policy.

Failure to evaluate Employee shall not prevent Cabrillo Point Academy from disciplining or dismissing Employee in accordance with this Agreement.

6. **Employee Rights**

Employment rights and benefits for employment at Cabrillo Point Academy shall only be as specified in this Employment Agreement, the Charter Schools Act and Cabrillo Point Academy's Personnel Handbook, which from time to time may be amended and modified by Cabrillo Point Academy, in Cabrillo Point Academy's sole discretion. During the term of this Agreement, Employee shall not acquire or accrue tenure, or any employment rights with Cabrillo Point Academy.

7. **Licensure**

Employee understands that employment is contingent upon verification and maintenance of any applicable licensure and/or credentials.

8. **Child Abuse and Neglect Reporting**

California Penal Code section 11166 requires any child care custodian who has knowledge of, or observes, a child in his or her professional capacity or within the scope of his or her employment whom he or she knows or reasonably suspects has been the victim of child abuse to report the known or suspected instance of child abuse to a child protective agency immediately, or as soon as practically possible, by telephone and to prepare and send a written report thereof within thirty-six (36) hours of receiving the information concerning the incident.

By executing this Agreement, the Employee acknowledges he or she is a child care custodian and is certifying that he or she has knowledge of California Penal Code section 11166 and will comply with its provisions.

9. **Fingerprinting/TB Clearance**

Fingerprint clearance for Employee will be acquired through submitting the Employee's fingerprints to the California Department of Justice. Employee will be required to assume the cost of all fees related to the fingerprinting process. Employee will be required to submit evidence from a licensed physician that he/she was found to be free from active tuberculosis. Both clearances need to be in place prior to the first day of service.

10. **Conflicts of Interest**

Employee understands that, while employed by Cabrillo Point Academy, he or she will have access to confidential and proprietary information. Employee therefore shall not maintain employment or contracts for employment, or engage in any consultant or independent contractor relationship, with any other agency or school that will in any way conflict with his/her employment with Cabrillo Point Academy.

Employee agrees that he/she will not enter into any contract(s), or participate in making any contracts, in which he/she has a material financial interest. Employee also specifically agrees that he/she will not refer students to, or encourage students to utilize, any Cabrillo Point Academy approved vendor to which the Employee has a familial or marital connection. Employee also specifically agrees that he/she will not recommend that Cabrillo Point Academy enter into a contractual relationship with a vendor to which the Employee has a familial or marital connection.

11. **Outside Professional Activities**

Any outside professional activities (including consulting, speaking, and writing not on behalf of Cabrillo Point Academy) shall not occur from 8:30 a.m. – 5 p.m. Monday through Friday, except holidays; teachers are expected to complete their Cabrillo Point Academy employment duties from 8:30 a.m. – 5 p.m. Cabrillo Point Academy shall in no way be responsible for any expenses attendant to the performance of such outside activities performed outside of employment with Cabrillo Point Academy.

12. **School Intellectual Property and Non-Competition**

Employee may during the course of [his/her] duties be advised of certain confidential business matters and affairs of Employer regarding its business practices, students, suppliers and employees. Employee's duties may also place Employee in a position of trust and confidence with respect to certain trade secrets and other proprietary information relating to the business of Employer and not generally known to the public or competitors. Such proprietary information may include student information, competitive strategies, marketing plans, special designs or systems, and accounting information. Employee shall not, either during [his/her] employment with Employer, or any time in the future, directly or indirectly:

- a. disclose or furnish, directly or indirectly, to any other person, firm, agency, corporation, client, business, or enterprise, any confidential information acquired during [his/her] employment;
- b. individually or in conjunction with any other person, firm, agency, company, client, business, or corporation, employ or cause to be employed any confidential information in any manner whatsoever, except in furtherance of the business of Employer;
- c. without the written consent of Employer, publish, deliver, or commit to being published or delivered, any copies, abstracts, or summaries of any files, records, documents, drawings, specifications, lists, equipment and similar items relating to the business of Employer, except to the extent required in the ordinary course of Employee's duties;

Upon termination of employment, Employee is required to immediately return to Employer all property of Employer in as good condition as when received (normal wear and tear excepted) including, but not limited to, all files, records, documents, curriculum, equipment and supplies, promotional materials, and similar items relating to the business of Employer.

C. **TERMINATION OF AGREEMENT**

This Agreement may be terminated by any of the following:

1. **Early Termination with/without Cause:** The School Administration or Board may unilaterally, and with or without cause or advance notice, terminate this Agreement. In consideration of the right to terminate this Agreement without cause, the School shall pay to Employee two weeks of his/her salary after termination occurs **based on receipt of a release of claims agreement and the return of items identified in B.12.c. If the employee refuse to sign a release of claims the employee will be paid for one day of employment.**
2. **Revocation/Nonrenewal of Charter:** In the event that Cabrillo Point Academy is either revoked or non-renewed, this Agreement shall terminate immediately upon the effective date of the revocation/nonrenewal of the charter, and without the need for the process outlined in Section b above.
3. **Death or Incapacitation of Employee:** The death of Employee shall terminate this Agreement and all rights provided under this Agreement. In the event that Employee becomes incapacitated to the extent that, in the judgment of the Board, Employee may no longer perform the essential functions of his/her job with or without reasonable accommodation, as set forth in the job specifications, the Board may terminate this Agreement.

D. **NON-RENEWAL/EXPIRATION OF TERM.** The Board may elect not to offer future employment agreements to Employee at its sole discretion, without cause, and this Agreement will lapse by its own terms.

E. **GENERAL PROVISIONS**

1. **Waiver of Breach**

The waiver by either party, or the failure of either party to claim a breach of any provision of this Agreement, will not operate or be construed as a waiver of any subsequent breach.

2. **Assignment**

The rights and obligations of the respective parties under the Agreement will inure to the benefit of and will be binding upon the heirs, legal representatives, successors and assigns of the parties hereto; provided, however, that this Agreement will not be assignable by either party without prior written consent of the other party.

3. **Governing Law**

This Agreement will be governed by, construed, and enforced in accordance with the laws of the State of California.

4. **Partial Invalidity**

If any provision of this Agreement is found to be invalid or unenforceable by any court, the remaining provisions herein will remain in effect unless such partial invalidity or unenforceability would defeat an essential business purpose of the Agreement.

F. **ACCEPTANCE OF EMPLOYMENT**

By signing below, the Employee declares as follows:

1. I have read this Agreement and accept employment with Cabrillo Point Academy on the terms specified herein.
2. All information I have provided to Cabrillo Point Academy related to my employment is true and accurate.
3. This is the entire agreement between Cabrillo Point Academy and me regarding the terms and conditions of my employment. This is a final and complete agreement and there are no other agreements, oral or written, express or implied, concerning the subject matter of this Agreement.

Employee Signature: _____ Date: _____

Address: _____

Telephone: _____ Social Security Number: _____

Cabrillo Point Academy Approval:

Date: _____

Principal, Cabrillo Point Academy

Public Random Drawing/Lottery Policy

I. Purpose

The purpose of this Public Random Drawing/Lottery Policy (“Policy”) is to establish the procedures under which the Cabrillo Point Academy (“School”) will conduct the School’s public random drawing/lottery in the event that applications for enrollment exceed the School’s capacity.

II. Enrollment

The School is a non-classroom based charter school that operates solely as an independent study program. Admission to the School is open to any student who resides within the boundaries of San Diego County or an adjacent county. The School will accept all students who wish to attend, so long as it has the capacity to serve them. The School’s Governing Board will annually determine the maximum enrollment for each school year based on, among other factors, the annual budget, staffing, and available resources prior to the start of the Open Enrollment Period. Limits may be established by grade level and for the school as a whole.

The Board will set an Open Enrollment Period each year. Applications will be accepted during the publicly advertised Open Enrollment Period each year for enrollment during the following school year. Following the close of the Open Enrollment Period, applications shall be counted to determine whether the School has received more applications than maximum enrollment capacity. If the number of pupils who wish to attend the School exceeds the School’s capacity for a specific grade level, enrollment in the impacted grade level or levels will be determined by a Lottery conducted in accordance with the procedures set forth in this Policy and applicable law. Admission preferences will only be extended consistent with this Policy, the School’s charter, and applicable law.

Admission preferences will not be based on any protected characteristics, including, but not limited to, disability, race, gender, national origin, and religion. In addition, enrollment preferences will not limit enrollment access for pupils with disabilities, academically low-achieving pupils, English learners, neglected or delinquent pupils, homeless pupils, or pupils who are economically disadvantaged, as determined by eligibility for any free or reduced-price meal program, or foster youth.

III. Lottery Procedures

In the event that there are more students who wish to attend the School than there are spots available upon closure of the Open Enrollment Period, the School will conduct a Lottery during the Spring semester prior to the academic year for which enrollment is sought.

All pupils, except those who are guaranteed admission as provided in this Policy and the School’s charter, who wish to enroll in the School must participate in the Lottery subject to the following:

1. Students who reside within the boundaries of the Dehesa Elementary School District (“District”) will have their names placed in the Lottery pool twice.

2. Students who reside outside the boundaries of the District will have their names placed in the Lottery once.

The following students are exempt from the Lottery and are guaranteed enrollment in the School: (1) students currently enrolled in the School at the close of the Open Enrollment period; and (2) siblings of currently enrolled students. “Sibling” is defined as a pupil who has at least one biological or adoptive parent in common with the admitted pupil, or who has been legally adopted by or placed under the legal guardianship of at least one biological or adoptive parent of the admitted pupil. Step-siblings are only considered siblings if they reside at the same address as the sibling who is admitted into the School.

Public notice of the Open Enrollment Period and date of the Lottery will generally be posted on the School’s website and the notice will provide the date, time, and location of the Lottery at least 10 days prior to the commencement of the Open Enrollment Period. This information will also be included in application forms. The Lottery will be conducted [by grade-level and] by the Principal or his/her designee using a random method of selection. Unique identifiers will be assigned to each applicant. The conduct of the Lottery will be open to the public and families are encouraged, but not required, to attend. The Principal or his/her designee will announce each applicant who is granted admission through the Lottery. Once the enrollment cap has been reached, the Principal or his/her designee will continue to drawing applicants will then be placed on the waitlist in the order drawn. Successful applicants will be notified electronically or by mail.

If a student is extended an offer of admission due to one of the preferences noted in this Policy or the School’s charter, the School may request supporting documentation as part of the enrollment process. The School will conduct a verification of such documentation prior to finalizing the student’s enrollment and may disqualify an applicant submitting materially false information.

After the Lottery process, and once an offer has been accepted by the family, additional information may be requested as part of the registration process. Following acceptance through the Lottery, students who are offered admission at the School at the time of the Lottery will have 10 calendar days to complete the registration process. If a student fails to timely complete the process, the spot may be filled from the waiting list.

Enrollment offers are valid only for the academic year for which the Lottery is conducted. There is no option to defer an offer of enrollment. Students accepting enrollment must generally complete required independent study agreements within seven (7) days of the beginning of the school year, unless otherwise advised by the School.

IV. Waitlist

If a slot becomes available because an accepted student declines enrollment, fails to timely complete the enrollment process, a student leaves the School after the start of the academic year, or as spots become available, the School may notify families on the waitlist in the order they appear on the waitlist.

Students drawn from the waitlist shall have five (5) school days to accept the enrollment slot (via telephone or email to the School) and proceed with the registration process. Applicants must

complete a registration packet with all required documentation and by the deadline given by the School to confirm enrollment.

Students who are not offered a spot for the academic school year for which the Lottery was held may remain on the waitlist for that academic year unless the parent or guardian requests that the student be removed from the waitlist earlier. The waitlist shall not carry over from one year to the next. Students who have not been admitted will be required to submit a new enrollment application for the next school year and are required to participate in the Lottery if space is limited.



Work Sample Policy

Cabrillo Point Academy offers independent study to meet the needs of pupils enrolled in the charter school; and as such, teachers much collect work samples from students to ensure that all students meet the State student academic achievement standards. This policy ensures that student work samples contain the information necessary to ensure the student's learning success.

The purpose of the Cabrillo Point Academy Governing Board approving this Work Sample Policy is to accomplish the following:

1. Provide an overview for the Work Sample Policy
2. Explain the requirements of an Acceptable Work Sample
3. Identify criteria for Non-Compliant Work Samples

1. Overview: As an independent study program, Cabrillo Point Academy is required to collect work samples from each of its students as a condition of apportionment. Work samples allow the student's supervising teacher to determine the time value of the completed student work. Work samples are turned in to the student's supervising teacher in accordance with the student's Master Agreement.

2. Procedures: Work samples must contain the following information:

1. Student's First Name and Last Name (nicknames are okay)
2. Date that the work was completed, including the year. The work sample must be the student's original work. If anything gets changed on the original work sample, the student must initial such changes. All initialed changes mean that the student made the changes, not the parent/guardian/caretaker or teacher.

The supervising teacher must verify the work sample by including the following:

1. Homeschool teacher's name
2. Student's full name
3. Course name (must match the Master Agreement)
4. Date the teacher reviewed the material
5. Date the student completed the sample
6. HST grade

3. Acceptable Work Sample Criteria:

- Original or scanned PDF version
- Demonstrates neat and organized work
- Demonstrates a good reflection of your child's learning and abilities

- Includes student's name and date in the top right-hand corner
- The sample needs to be completed and dated within the collection Learning Period
- Must be non-sectarian (non-religious)
- Photographs must include a summary from the student's perspective
- Samples may be typed or handwritten by the student. Younger students may dictate to the parent to write or type for them

4. Non-Compliant Work Samples Include:

- Scanned documents that are difficult to read or are very light
- A scanned or printed document of a certificate of completion or report from an online learning platform
- Samples completed and dated not within the Learning Period
- A photograph which does not include the student's summary of the project/concept
- Incomplete worksheets or work

Proposal for Business Management Services





February 24, 2020

Ms. Jennifer Lorge, Principal
Cabrillo Point Academy
13915 Danielson St. #103
Poway, CA 92064

Dear Jennifer:

Thank you for the opportunity to submit a proposal for business management services for Cabrillo Point Academy. We are honored to be considered for working more directly with you and your organization. Charter Impact provides a variety of business management services to charter schools and non-profit organizations nationally and we pride ourselves on our hands-on approach and top-notch customer service.

Our team is well-versed and experienced with the needs of charter schools, CMO's and complex organizational structures and we offer customized solutions accordingly. As you know, our company's style combines a professional and friendly feel, with personalized service being our number one priority. Our goal is to provide timely and accurate financial reporting as well as insight and guidance in a way that only an experienced financial professional and CPA can. We also focus on providing the professional development and tools necessary to empower board members and executives to make the best business decisions possible for their organization.

As Cabrillo Point Academy experiences not only great successes but also inevitable challenges in the future, we would love the opportunity to support you with the most accurate and efficient advisement and service. We believe that utilizing the deep, nuanced expertise of an outsourced provider would be an asset, especially as the school navigates changes in the coming years. We feel confident that Charter Impact would be an excellent partner for Cabrillo Point, and that we can provide a competitively priced service offering with the highest qualifications and service capabilities.

Please contact me with any questions or comments regarding our proposal or our services. We are very excited about the opportunity to partner with your organization and greatly look forward to hearing back from you.

Sincerely,

A handwritten signature in black ink, appearing to read 'Spencer C. Styles'.

Spencer C. Styles, C.P.A., M.P.A.
President and CEO
Charter Impact, Inc.

Table of Contents

1	Collaboration as a Management Solution
2	Mission Statement
3	Client Success Stories
4	References
5	Cabrillo Point Academy Proposed Support Team
6	Team Bios
8	Services Proposed
8	Business Management Services
12	Payroll Processing and Retirement Reporting
13	Term and Fees

The Charter Impact team has an uncanny ability to break down complex financial information. They do a great job balancing prudent fiscal management with creative problem-solving.

VALERIE BRAIMAH
EXECUTIVE DIRECTOR, CITY CHARTER SCHOOLS



Collaboration as a Management Solution

Managing a charter school and providing specialized education to your local community is a righteous endeavor and one that only a team of highly qualified educators can tackle. However, navigating the financial and operational side of the organization can be a daunting task. School funding, regulations and reporting are constantly changing. Managing and monitoring these areas while staying in compliance with internal controls and avoiding audit findings is labor intensive, and it takes your time away from the classroom. **We can help.**

Charter Impact is a mission-driven business partner dedicated to empowering charter schools and non-profits with professional, personalized financial management and operational support. Our number one priority is to provide **timely, accurate financial information** with **dependable, responsive customer service** at an affordable cost.

Our model of service resembles more of a hand-in-hand partnership than a “back” office company. We stand with our clients, not behind them, and help navigate from start-up through strategic growth and into long-term sustainability. We believe that what separates us from other firms is our ability to go a step beyond producing financial statements. As a team of experienced CPA's, finance experts, and other business professionals focused on nothing but charter school and non-profit business management, we can offer the type of high-level professional and personal support that no one else can.

As **Cabrillo Point Academy** continues its strategic focus on long-term sustainability and stability, it will be critical to have support from a team of professionals experienced in managing charter schools as well as affiliated non-profit organizations such as CMO's, facility holding companies and foundations. Having our team at your disposal will allow you to manage changes on the Cabrillo Point horizon effectively and efficiently, and we will work with you and your board to assist in the long-term strategic planning of the organization to ensure success.

We highly encourage you to contact our references.

From the perspective of a school leader, they can speak very clearly about what it means to work with a business management firm as a true partner to their mission.

Mission Statement

Our Vision

Charter Impact empowers mission-driven organizations to achieve their goals through personalized support in finance, operations and business management.

We accomplish this through enthusiastic collaboration within our team and with our clients to support their communities.

Core Values

DO GOOD

Make sure it's right for you, the client, and the company.

BE HONEST

Communicate with integrity and speak the truth.

SUPPORT EACH OTHER

Your teammates are as important as your clients.

SHARE YOUR IDEAS

Every one of us brings unique experiences to the team.

DEBATE IS HEALTHY

Speak up, presume positive intent, seek clarity, and work toward resolution.

GET UNCOMFORTABLE

Growth happens outside your comfort zone.

FOCUS

Distractions are ever-present; don't let them become stumbling blocks.

QUESTION THE STATUS QUO

Ask questions, present solutions, push the envelope, and then push it again.

EMBRACE CHANGE

This is not a static task, job or company, and you are not a static person.

KEEP LEARNING

Continuously expanding your abilities and skill-sets keeps you sharp and motivated.

START STRONG; FINISH STRONG

Give it your all and present your finished product with pride.

HAVE FUN

Your job is a worthy pursuit that impacts everyone around you. Enjoy yourself.

Client Success Stories

The stories below provide a recent sample of what we help our clients accomplish.



New \$38.5M School Facility

In the Fall of 2017, the *Palmdale Aerospace Academy* moved into its new 165,000 sq. ft. facility serving grades 6–12. Additional community demand for the school's innovative programs led to the planned addition of a new elementary school. Through Charter Impact's leadership and process management, the school secured a second tax-exempt bond issuance prior to opening the expanded grade levels and only a year after the initial bond issuance for the first facility. After successfully receiving a "BB" rating from Standard & Poor's, we achieved a 4.40% interest rate for the 30-year term. This is the equivalent of "BBB-" or "investment-grade" security. As a result, the school **funded \$350,000 in needed equipment without increasing its monthly payments**. The elementary school broke ground in October 2018 and began serving grades K-5 in the fall of 2019.



\$1.5M in Debt Reduced to \$0

Life Source International Charter School joined Charter Impact in September 2015 carrying \$1,500,000 in revenue anticipation notes due on September 20, 2015. Through a detailed review of the school's operations and a revision to the budget, we created and implemented a refinancing plan and monthly cash management tool which enabled the school to **completely eliminate its debt by May 31, 2016**. The school is now pursuing permanent financing to purchase a facility — something that was not previously possible.



Successful Appeals

Both *Julia Lee Performing Arts Academy* and *College Preparatory Middle School — La Mesa* faced an uphill battle on approval of their new charter petitions for the 2018–19 school year. After being denied at local levels, we stood and fought with both schools, creating detailed financial plans, responding to inquiries and presenting to the authorizers — Riverside County for *Julia Lee* and the State Board in Sacramento for *College Prep*. **Both schools won their appeals and are in the second year of serving their communities.**

References

DAVID BAUTISTA

Executive Director, Adelante Charter School
Santa Barbara, California
dbautista@sbunified.org | 805.966.7392

BRENT BISHOP

Director, Highland Academy Charter School
Beaumont, California
brentbishop@highland-academy.org | 951.266.0220

VALERIE BRAIMAH

Executive Director, City Charter Schools, Inc.
Los Angeles, California
vbraimah@citycharterschool.org | 818.877.3557

CHRISTINA CALLAWAY

Director of School Business, College Prep Middle School
La Mesa Spring Valley, San Diego, California
ccallaway@mycpms.net | 619.303.2782

RAUL CARRANZA

Superintendent of Schools, TEACH Public Schools
Los Angeles, California
rcarranza@teachpublicschools.org | 323.754.5500

SARA JORDAN

Executive Director, Pathways Charter School
Rohnert Park, California
sara.jordan@pathwayscharter.org | 707.585.6510

KRISTIN KRAUS

Director of Finance and Operations, SOAR Charter Academy
San Bernardino, California
kkraus1389@gmail.com | 909.888.3300

TERRI MARTIN

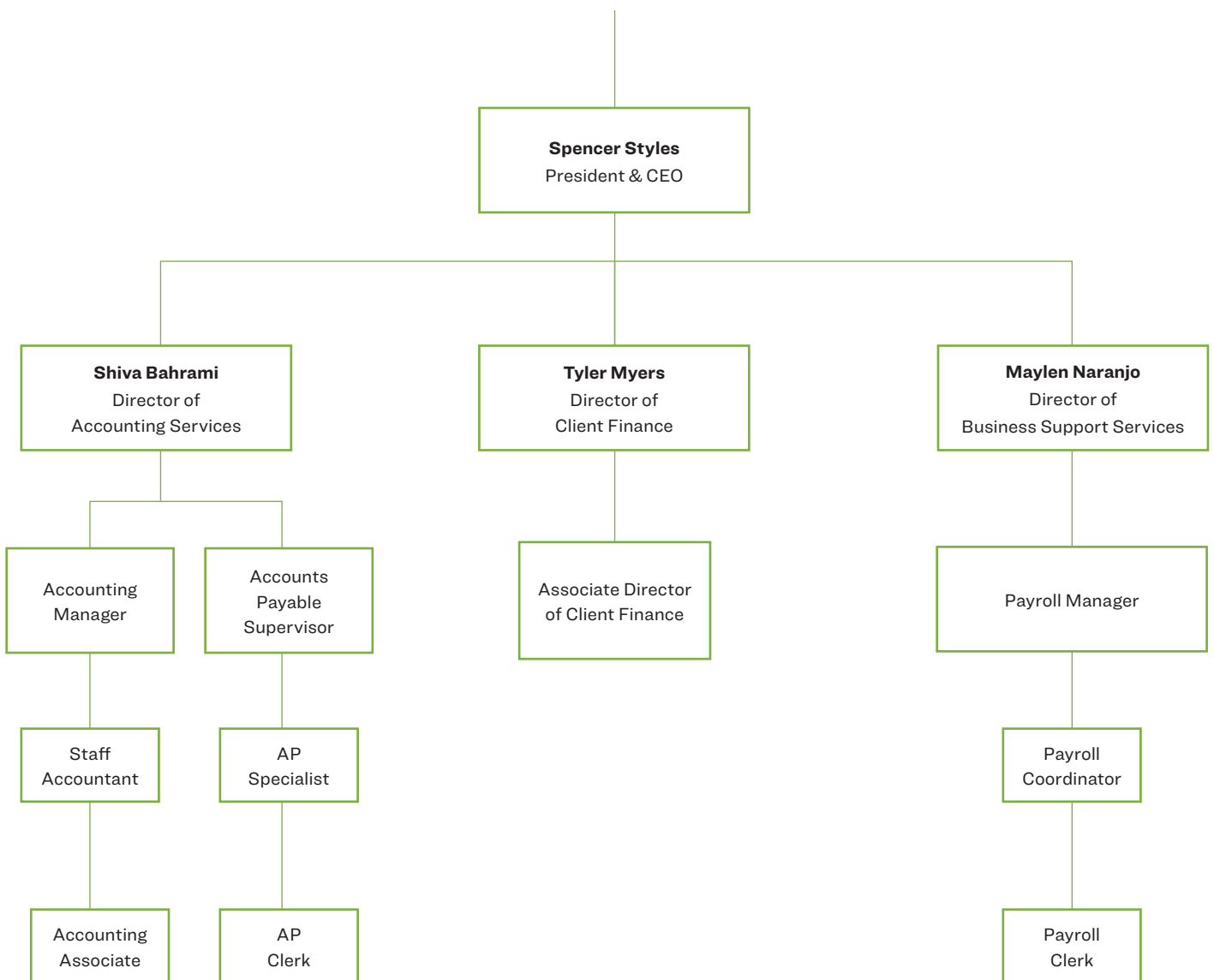
Business Director, Aspen Public Schools
Fresno, California
terri.martin@aspenps.org | 559.225.7737

Financials are accurate and on-time. District and State compliance reporting has never been submitted past a deadline. Charter Impact is prompt and extremely professional.

TERRI MARTIN

BUSINESS DIRECTOR, ASPEN PUBLIC SCHOOLS (FRESNO, CA)

School's Proposed Support Team



Team Bios

Below you will find bios for members of our team who will be working directly with your organization. For more information on the rest of our leadership team, please visit our website at www.charterimpact.com.

SPENCER STYLES, C.P.A, M.P.A.

President & CEO



As President and CEO, Spencer spearheads Charter Impact's initiatives and is responsible for the long-term growth and sustainability of the company. In addition to internal operations oversight, Spencer guides new schools through the start-up and

grant application process, directs and manages the strategic growth of existing schools, and bolsters established schools in their navigation and execution of facility financing.

Prior to Charter Impact, Spencer was the Vice President of Finance for Alliance College-Ready Public Schools, a network of 28 free public high schools and middle schools serving over 12,000 students in low-income communities in California with historically under-performing schools. His primary areas of concentration included maintaining all accounting systems, designing and implementing the internal control framework, developing cash flow projections and forecasts for organizational growth, and providing guidance on fiscal best practices.

Before working in the charter school world, Spencer was a practitioner in public accounting for several years and has experience leading audits and reviews of privately-held companies, publicly-traded companies, governmental agencies, not-for-profit organizations and employee benefit plans. He has also provided a wide variety of technical consulting including litigation support, due diligence testing for mergers and acquisitions, internal control design and implementation, stock option valuation and Sarbanes Oxley Section 404 compliance and implementation.

Spencer earned a Bachelor of Business Administration in Accounting with a minor in Mathematics, and a Master of Professional Accountancy degree with an emphasis in Finance, both from the University of Wisconsin-Whitewater. He is an actively licensed CPA.

TYLER MYERS

Director of Client Finance



Tyler comes to Charter Impact with a strong background in non-profit organizations, start-up environments, project management, budgeting, forecasting, and process development.

Prior to joining Charter Impact, Tyler was the Finance Manager for a Vorwerk and Co. U.S. division start-up where he was instrumental in helping to grow the company from 5 employees to over 50. He led the charge in creating a fully operational Finance and Accounting department by hiring and training staff, implementing new scalable processes and systems, and developing the company's budgeting and forecasting model. Additionally, he led numerous successful projects there, including a global ERP implementation involving members from Singapore, Germany, and the United States.

Before Tyler was a Finance Manager, he worked for a local Los Angeles non-profit Community Development Corporation (CDC), helping fund small businesses in the metropolitan area in order to create new jobs and give back to the community. During his time with the CDC, he trained numerous staff, developed and improved both internal and external reporting, managed several of the company's annual audits, and ensured the accuracy and timeliness of government grant billings.

Tyler has a strong passion for public education that was strongly influenced by the education-focused environment of his childhood; his mother was a teacher and principal administrator for 34 years. During his college years, Tyler volunteered his time as a mentor, helping students in grade school classes.

Tyler graduated with a Bachelor of Science degree in Accounting with a minor in Philosophy and a Master of Accountancy degree, both from Southern Illinois University Carbondale, home of the Salukis.

SHIVA BAHRAMI, M.B.A.

Director of Accounting Services



Shiva brings over 25 years of finance and accounting experience to Charter Impact. In her current role, she spearheads Charter Impact's core service model, by leading all accounting and reporting related functions with a focus on team leadership

and development, quality, timeliness, and process improvement.

Prior to Charter Impact, Shiva was the Director of Financial Services for California State University of Northridge, where they serve over 40,000 students. Although her priority focus was mainly to oversee accounting, payables, receivables, payroll, funds and cash management, Shiva also served as the treasurer of the board for CSUN's real estate business and a member of BASC (Business Administration of Systems Committee), where she developed and implemented automated workflows to aid in efficiencies.

Prior to CSUN, Shiva served as the Chief Financial Officer at Parsons Federal Credit Union, overseeing assets of over \$250 million. During her almost five-year tenure there, she helped the credit union increase their annual investment income by \$1M by adding new investment instruments and increased the credit union's loan portfolio by 9%. While there, she was also the chairman of both ALCO (Asset and Liability Committee), and the Pricing Committee.

For the past six years, Shiva has been personally involved with charter world, as her two young children attend a local charter school. She is a passionate supporter of the charter concept and its potential to make a positive difference in the lives and outcomes of students, and she is proud to vigorously support her school and charter community.

Shiva earned a Bachelor of Science in Accounting from DeVry University and a Master of Business Administration with an emphasis in Finance from Keller Graduate School in Long Beach, CA.

MAYLEN NARANJO, M.B.A.

Director of Business Support Services



Maylen is responsible for the oversight and management of Client onboarding, Client training and Payroll support at Charter Impact.

She has been working with charter schools in several capacities for over a decade.

In 2007, she joined the charter world as a payroll administrator at Partnerships to Uplift Communities (PUC), a non-profit charter school organization consisting of 16 schools serving the Northeast San Fernando Valley and Northeast Los Angeles. While there, she advanced to become the manager of PUC's Accounting department.

After her time at PUC, Maylen joined the team at a financial management services provider specializing in charter schools, where she played a leading role in managing both client services and personnel.

She continues that work at Charter Impact today, where she oversees and implements efficient operational systems, processes and policies in support of our growing company's mission and our expanding team.

Maylen is passionate about providing excellent service and personalized support to the great organizations we serve, and is confident that the work we do helps these schools offer the best possible education to underserved students.

Maylen earned a Bachelor of Science in Accounting and a Master of Business Administration from the University of Phoenix.

Services Proposed

Charter Impact's array of services provides all of the support that you would expect from an in-house finance/accounting department, plus student data services. Our services include not only the accounting, accounts payable and payroll departments, but also assistance with reviewing contracts, ad hoc financial analysis, support with vendor negotiations, assistance with facility financing, management of lender relationships, and much more.

A basic description of our services are as follows:

Business Management Services

1. IMPLEMENTATION AND TRAINING

- + Create a customized accounting database based specifically on the school's reporting needs (both internal and external)
- + Import historical data to the extent possible (typically monthly balances as far back as data is available) to allow for maximum comparability of financial information
- + Review existing contracts for terms, requirements and school responsibilities
- + Create, refine or replace existing processes and procedures to increase efficiency and improve the strength of internal controls
- + Provide training in specific processes and procedures to school site staff including: accounts payable, accounts receivable/deposits, petty cash accounts, student stores, payroll, etc.
- + Provide training to new and/or existing board members on:
 - Charter school funding - including drivers, calculations, restrictions and cash flow timing,
 - Reading and interpreting financial reports, and
 - Internal controls and the board's responsibility for oversight and maintenance

2. ACCOUNTS PAYABLE PROCESSING

- + Review all invoices sent to Charter Impact for proper approval and coding
- + Enter invoices for each reporting entity, process check payments, and send checks directly to vendors to reduce turn-around time
- + Provide weekly check registers, accounts payable aging reports, vendor payment history or other ad hoc reports on a recurring or as needed basis
- + On an emergency basis, same day payments can be processed in addition to the weekly cycle (*additional processing fees apply).

3. ACCOUNTS RECEIVABLE PROCESSING

- + Monitor the receipt of State approved ADA funding amounts and verify balances paid are correct

- + Work directly with governmental agencies to resolve any issues or discrepancies identified
- + Review all donor letters and grant agreements for proper coding and revenue recognition in accordance with GAAP
- + Maintain independent records, as necessary, for both public and private sources to ensure accurate reporting and compliance

4. BANK RECONCILIATION AND GENERAL LEDGER MAINTENANCE

- + Reconcile all bank accounts on a weekly basis for a heightened level of security and monitoring
- + Alert management immediately to any irregularities, un-reconciled amounts, or missing documentation
- + Maintain general ledger in accordance with GAAP on an ongoing basis, ensuring all revenues and expenses are recorded and reported accurately
- + Maintain an inventory of fixed assets over the school-designated capitalization threshold and calculate depreciation on a monthly basis

5. CASH MANAGEMENT

- + On a weekly basis, use reconciled bank balance to project daily cash balances for 30 days (for analysis of cash for any period of time over 30 days, the monthly forecast will be utilized)
- + On a weekly basis, provide schools with amount of cash available for accounts payable or other discretionary spending while ensuring sufficient funds for regularly recurring transactions such as payroll, taxes, rent, insurance, etc.
- + Plan and manage payment of outstanding debt as needed
- + Prepare all financial reporting necessary for renewal of loans or lines of credit
- + Present line of credit status to board and obtain board resolutions as needed
- + Monitor compliance with all debt covenants as a part of the ongoing budgeting and forecasting process
- + Analyze future cash flow and determine whether schools need to make adjustments to spending or seek other funding options.

6. MONTHLY FINANCIAL REPORTING

- + Provide a monthly reporting package by the 20th day of the following month, assuming all necessary data is received from the school site on a timely basis, to ensure management has the necessary information to make sound business decisions
- + Create financial reporting package based on customized business segments. This includes budgets and forecasts as well.
- + Offer a menu of report options for the monthly financial reports including, but not limited to:
 - Monthly summary by financial section with bulleted highlights for presentation purposes
 - Monthly Cash Flow Forecast and comparison to approved budget
 - Budget vs. Actual Report (both current month and year-to-date)

- Schedule of Revenue and Expenses by Period
 - Comparative Statement of Financial Position
 - Combining/Consolidating Statements of Activities and Financial Position
 - Statement of Cash Flows (both current month and year-to-date)
 - Accounts Payable/Receivable Aging
 - Check Register(s)
 - General Ledger Detail
 - Other customized reports as requested by the school, executive team or board
- + On a monthly basis, review and present the financial package with the school staff and/or board members to assess the current fiscal condition of the school
 - + Provide access to the accounting database via a VPN connection allowing school staff to run reports and see real-time data as it exists in the system
 - + On an as needed basis, provide or present financial information or training to lenders, board members, community members, parents or other external parties as requested by the school.

7. COMPLIANCE AND GRANT REPORTING

- + Support school with LCAP development, including preparation of the budget, ensuring adherence to Supplemental and Concentration funding requirements and integrating the LCAP budget into the overall school operating budget
- + Assist the school with grant applications including the development of grant-specific budgets as well as school long-term projections
- + Track all restricted revenues (both public and private) to ensure compliance with governmental and donor-required restrictions
- + Provide financial information and reporting to governmental entities, donors, and other supporting organizations for grant compliance

8. CHARTER AUTHORIZER SUPPORT

- + Support the school with all financial and business communications with the charter authorizer. This includes, but is not limited to:
 - Prepare regular financial reporting (budget and interims)
 - Provide ad hoc financial documents and reports as requested
 - Partner with school leaders to meet with authorizer staff to discuss fiscal health and outlook of the school
- + Assist in the renewal process by preparing and/or reviewing fiscal narratives, preparing the required forecasts and cash flow projections, and calculating the LCFF with assumptions.

9. ANNUAL BUDGET CREATION AND REVISIONS

- + Work with school staff on an annual basis to create a 5-year budget and cash flow projection to ensure proper future planning
- + Provide a monthly budget and cash flow report to monitor the cash balance and protect against

the gap caused by revenue and expenditure seasonality

- + Revise the annual forecasts on an as-needed basis (but at least monthly) to provide school staff and board members with accurate year-end projections and the information necessary in a constantly changing environment

10. AUDIT PREPARATION AND OVERSIGHT WITH AUTHORIZERS

- + Maintain electronic records of all transaction support
- + Work directly with the independent auditors to provide information, thereby reducing client time commitment and audit fees
- + Participate in, and support all oversight reviews from charter authorizers and governmental agencies to improve outcomes

11. TAX PREPARATION AND SUPPORT

- + Prepare and electronically submit Form 1096 (summary of all 1099 forms) to the IRS for all required vendors and service providers
- + Prepare and report sales and use tax returns
- + Provide any and all information necessary for the preparation and submission of Form 990

NOTE: Payroll tax reporting is included in the payroll processing section below

12. STRATEGIC PLANNING

- + Work with school management and the Board of Directors to develop long-term strategies to ensure the school's prosperity
- + Provide second opinions and act as sounding board for school management and the Board on business and financial matters

The Charter Impact team has been extremely attentive and patient. They are willing to go above and beyond so we truly understand our budget and how funding works.

KRISTIN KRAUS
DIRECTOR OF FINANCE & OPERATIONS, SOAR CHARTER ACADEMY

Payroll Processing and Retirement Reporting

Payroll is one of the most critical areas of an organization's business office. Our payroll team is well versed in charter school payroll issues and has the depth of experience to handle any and all processing nuances that inevitably arise.

1. PAYROLL PROCESSING

- + Maintain employee static pay information in a payroll database
- + Process status updates, new hires, terminations, and/or informational changes in payroll system
- + Assist in the development of a regular payroll schedule that is compliant with State labor laws and consistent with employee contracts
- + Process supplemental payroll runs such as the following:
 - Involuntary termination - check will be prepared ahead of time and provided to the school on the termination date
 - Voluntary termination without notice - the check will be prepared and delivered to the employee within the time frame required by the State
 - Scheduled bonuses/stipends
 - Additional unscheduled/emergency payroll runs
- + Process and pay all federal and state payroll tax payments according to required guidelines
- + Prepare the state payroll tax filing report annually, and quarterly for federal and state agencies
- + Prepare, review, and distribute W-2s to all employees

2. RETIREMENT AND OTHER REPORTING

- + Process and submit monthly STRS and PERS reports to the third-party administrator (i.e. Hess and Assoc.) or County office
- + Submit payment via ACH or cashier's check within the requisite timeframe for pension contributions
- + Process 403(b) retirement plan deductions, if applicable, and in compliance with State and Federal laws submit payments and provide 403(b) census information to third-party administrator
- + Submit compensation reports to State Controller and Bureau of Labor Statistics, if applicable

3. WEB-BASED EMPLOYEE TIMEKEEPING SYSTEM

- + All employees can be given online access to a streamlined, secure electronic timekeeping system which is fully integrated into our accounting system and eliminates the need for paper timesheets.
- + In addition to entering time, employees can also electronically:
 - request time off
 - make changes to their addresses and W2s
 - access their historical paystubs

4. GENERAL SUPPORT

- + Provide support and assistance with creation of internal processes and procedures, forms and tracking systems

Term and Fees

The term of the initial contract would be from July 1, 2020 through June 30, 2023. Proposed fees for services are as follows:

1

Implementation and Set-Up

For Cabrillo Point Academy, we will waive our standard implementation and set-up fee for time spent on the initial set up, accounting system customization, updated cash flow forecast and process implementation.

2

Business Management Services

Variable fee of 1.75% of total revenue for each reporting entity.

3

Payroll Processing and Retirement Reporting

Payroll processing	\$100 base plus \$2.75 per employee per pay period
Garnishment reporting	\$2.50 per occurrence
New employee reporting	\$3.50 per occurrence
Payroll delivery via FedEx	\$35.00 per occurrence per 50
Quarterly/Annual Reporting	\$20.00 per occurrence
Form W-2 or 1099 (for contractors paid via payroll)	\$5.75 each

Note: For 50 employees paid semi-monthly, costs would average \$500 per month

This proposal is valid for 90 days.